

Spring 2025 | Volume 10 | Edition 1

SOUTH DEVON

R E V I E W

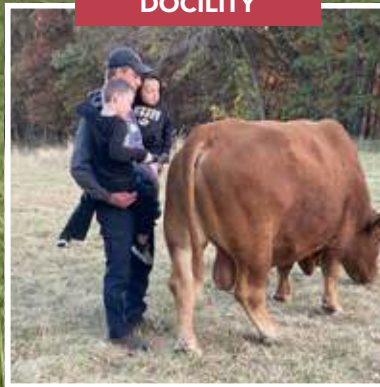


WHY DO WE HAVE SOUTH DEVON CATTLE?

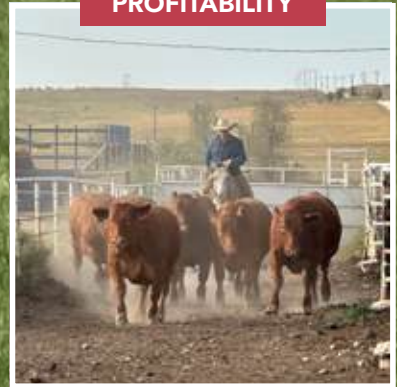
MATERNAL



DOCILITY



PROFITABILITY



LONGEVITY



15 year old Hallmark Dam

PERFORMANCE



Let us help you find the right genetics for your program.

RANDY & SHARON CAMPBELL

(573) 782-3418 • (573) 694-0179

rscampbell1984@gmail.com

ZACHARY CAMPBELL

(573) 644-4635



YOUR SOURCE FOR SOUTH DEVON GENETICS IN THE WEST

Midland Bull Test

THE FINAL SORT

April 3, 2025

For more information, performance reports and sale catalog:

www.midlandbulltest.com



DLCC GOLD DUST 64G

Sire of Tag # 702, 704, 705 and 707



**2024 CHAMPION HIGH INDEXING AND
HIGH EFFICIENCY SOUTH DEVON BULLS**

MJB Ranch, Jim & Mary Brown, Lodge Grass, Montana

Bulls are measured for Performance, Efficiency, Maternal and Carcass
Semen Tested, Carcass Ultra-sounded, Screened for Soundness and Disposition
BVD-PI Tested Negative, Tested for efficiency (RFI) and Feed Conversion

2025 CONSIGNORS

DLCC Ranch
320-249-2130

**Thompson Land
& Cattle Company**
801-391-8989

C/N Ranch
406-690-8731

JVM Cattle Company
641-521-9917

Advertiser Directory

Bar E.....	19
Diamond Plus Cattle	36
DLCC Ranch.....	10 & Inside back cover
Elkington Polled Herefords & South Devon	36
Hoxie Hill Farms	19
JVM Cattle Company	36
K&M Cattle	43
KNN Farms	19
Midland Bull Test.....	3
NASDA Jr Association - Jr Nationals.....	11
Nance Auction Services	45
Northern States South Devon Association	45
Nichols Farms.....	Back cover
Popken South Devon	40
Showboat Cattle Co./Showboat Media Co.	45
Thompson Land & Cattle	59
Triple Crown South Devons.....	Inside front cover
Walnut Grove Farm/CS Livestock.....	40
Walnut Lane	43

Staff

Lynn Giess..... Editor
 Sherry Doubet NASDA Registry

ON THE COVER: TWL Livestock, Blockton, Iowa

Editorial Design by Shannon Krueger, Allegro Creative LLC, Abilene, KS



©2025 North American South Devon Association. All rights reserved. Reproduction without permission from the North American South Devon Association is prohibited. The North American South Devon Association is not responsible for claims made by Advertisers in The South Devon Review. The North American South Devon Association is not responsible for unsolicited materials. Contributors are invited to submit photographs and manuscripts pertaining to South Devon cattle and their producers. Preference is given to material accompanied by photographs (300 dpi). All material and photographs are subject to editing and revisions.

Please send address changes to: North American South Devon Association, PO Box 850, Big Horn, WY 82833.

Published annually by the North American South Devon Association dedicated to the promotion and improvement of breeding, feeding and marketing South Devon cattle.



12



14

From the President..... 6
 2025 Board of Directors7
 Committee Appointments.....7
 News & Notes 8
 Faces & Places 44
 2025 Membership Directory 46
 2025 Sire Summary..... 49

Contents

12 **Gray Ranch**
 2025 Commercial Producer of the Year

14 **Diamond Plus Cattle**
 2025 Seedstock Producer of the Year

16 **The Value of a
 Registration Paper**

18 **What is a Good Bull Worth
 in 2025?**

20 **DLCC Ranch**
 2025 Hall of Fame

24 **Cierra Steinlicht &
 Abigail Koellner**
 Clint Kniep Scholarship

26 **Andrea Smith & Lettie Brown**
 2025 Youth Heifer Recipients

27 **Iowa State Fair**

30 **MN Beef Expo**

31 **Kickin' It in Kansas**
 2024 Junior Nationals

37 **52nd National Show**
 National Western Stock Show

41 **Northern International
 Livestock Exposition**

The Whole is the Sum of the Parts

“If you always do what you’ve always done, you’ll always get what you’ve always got”. Probably not what I was supposed to learn in my high school chemistry class, but it’s amazing how relevant it is. Change is scary, but progress is necessary in today’s world. Progress builds from existing knowledge, experience and resources to move the needle. Building anything is impossible without a foundation. Our past as an association, has laid the foundation for progress. In my mind that progress is two-fold: our cattle and our people.



The next pages build on excitement for our breed as we push our phenotypic and genotypic advantages to be shared with the beef industry. Congratulations to all the exhibitors whose pictures represent our association as winners. These are not the only high caliber cattle that were at shows. Thank you to all who travelled and exhibited, but may have missed out on the backdrop. Continue striving for excellence in your breeding, feeding, and every other aspect of exhibition. Complacency is the enemy of progress; your drive will continue to push us all. If the showing is not your forte, find one of the many breeders that offer South Devon or Poundmaker genetics for sale. Regardless of your goals or needs, the versatility and quality of our cattle offer positive additions for any herd. Thank you to those breeders who continue to offer genetics, no matter how many cattle you market. You are our people and that matters.

No entity can sustain, or progress, without people. Be confident that in reading this that you work with some of the best. Thank you to board members for

their service, both past and present. Thank you junior board and the junior membership for not only highlighting cattle, but showcasing the skills and leadership of talented young people. There is not another breed where you can experience such success as a young person with nothing more than your involvement. Thank you to all membership for the unwavering dedication to progress within our breed. Every member and producer, no matter how small, play an important part

in every aspect of moving this breed forward.

In this upcoming year, let’s build on the solid foundation and momentum of our past. Our charge forward is to not lose sight of our foundations and uniqueness, but apply those qualities to growth and development. Step out of your comfort zone as a breeder, exhibitor, or member. Register those two cows. You matter, and there is no other association where a small voice can be heard as loudly as NASDA. Continue to strive for excellence in every aspect of your operation, no matter how large or small, and capitalize on the resources you have available to help you achieve your goals. Along the way, let’s remember to remain proud of the cattle we raise, excited about the future of our association and the beef industry as a whole, and open minded to new applications and progress that will make us all better. If there is an organization where opportunity offers itself to everyone regardless of their background or achievements it’s here, where a school teacher from Texas gets the opportunity to serve and learn from the North American South Devon Association. I hope you all stay as excited as I am for what is yet to come!

Sincerely,

Jared Mumm

NASDA President

2025 BOARD OF DIRECTORS

Jared Mumm, President

1717 Division Street, Commerce, TX 75428
(208) 308-5785 • jared.mumm@yahoo.com

Kurt Nelson, Vice President

W5137 290th Avenue, Bay City, WI 54723
(715) 594-3805 • knnfarmswi@gmail.com

Joel Popken, Treasurer

33360 220th Street, Swanville, MN 56382
(320) 547-2202 • jpopken@wisper-wireless.com

Stephen Elmore

1235 W Mt. Gilead CH Rd., Clinton, NC 28328
(910) 385-6200 • sandbelmore@centurylink.net

Dar Giess

33424 183rd Street, Pierz, MN 56364
(320) 249-2130 • dlccranch@outlook.com

Gino Gnech

20990 Morelock Road, Malin, OR 97632
(530) 905-0817 • jackignech@yahoo.com

Jim Kuebke

33 Kuebke Road, Dudley, MA 01571
(508) 245-7984 • ameradaholsteins@charter.net

David Presler

6161 56th Avenue SE, Gackle, ND 58442
(701) 320-6934 • super_dave_03@hotmail.com

Mike Steinlicht

16764 North Cedar Road, Valley Falls, KS 66088
(785) 224-8860 • m_steinlicht@yahoo.com

Jordan Vander Molen

1186 133rd Street, Pella, IA 50219
(641) 521-9917 • jordanjvm@gmail.com

Mike Vanden Berg

55 Ward Road, Hammond, NY 13646
(315) 744-4273 • mapleallis@gmail.com

Wyatt Lawrence

12147 293rd Avenue, Princeton, MN 55371
(763) 242-2804 • wyattherf99@gmail.com

COMMITTEE APPOINTMENTS

Executive

Steve Elmore, Dar Giess, Jared Mumm, Kurt Nelson, Joel Popken

Finance

Joel Popken, Chairman, Jim Kuebke, Kurt Nelson

Rules & Ethics

Steve Elmore, Chairman, Dar Giess, Joel Popken, Mike Steinlicht, Mike Vanden Berg

Show, Sales & Events

Dar Giess, Chairman, Lane Giess, Gino Gnech, Wyatt Lawrence, Jared Mumm, Kurt Nelson, Joel Popken, Jordan Vander Molen

Donation Heifer Program

Jordan Vander Molen, Chairman, Gino and Emma Gnech, Nettie Nelson, Mike Vanden Berg, Tayler Vander Molen

Membership & Junior Programs

Wyatt Lawrence, Chairman, Lynn Giess, Gino Gnech, Jillian Kniep, Jared Mumm, Nettie Nelson, Ciera Steinlicht, Stephanie Steinlicht, Jordan Vander Molen

Performance, Carcass, IGS Programs

Lane Giess, Chairman, Steve Elmore, Dar Giess, Jim Kuebke, Jared Mumm, Joel Popken, David Pressler, Mike Vanden Berg

Breed Improvement & Promotion

Kurt Nelson, Chairman, Lane Giess, Lynn Giess, Gino Gnech, Wyatt Lawrence, Jared Mumm, David Pressler, Mike Steinlicht, Mike Vanden Berg

NASDA Registry Office

Sherry Doubet

PO Box 850, Big Horn, WY 82833
Phone: 303-770-3130 • Fax: 303-770-9302
info@southdevon.com

NASDA Communications

Lynn Giess

33424 183rd Street, Pierz, MN 56364
southdevon_lynn@outlook.com • 320-250-9121
www.southdevon.com

NASDA BOARD OF DIRECTORS MEETING HIGHLIGHTS

- Voted to change the group class show rules for all nationally sponsored shows to read: animals must be bred or exhibited by the individual and/or ranch entering the class.
- Established a program to 'Bridge the Gap' between senior and junior members to encourage juniors to stay involved in the registry.
- Reviewed DNA requirements and discussed encouraging breeders to genotype all bulls with the GGP 100k plus parentage.

NEWLY ELECTED TO THE NASDA BOARD

David Presler, Gackle, North Dakota, Jim Koebke, Dudley, Massachusetts, Dar Giess, Pierz, Minnesota and Kurt Nelson, Bay City, Wisconsin. Thank you to outgoing board members Lane Giess and Dr. Dale Alumbaugh for your service to the North American South Devon Association.

JUNIOR ASSOCIATION ELECTS LEADERSHIP

The North American South Devon Junior Association elected leadership at the 2024 Junior National held in Holton, Kansas. Newly elected board members include Jaxson Van Haur, Jace Peterson, Chace Terry, Lauren Zaabel, Ciera Steinlicht, Jillian Kniep, Addison Kelm, Brady Mitchell, Lindsay Strauch, Bethany Strauch and Savannah Anderson.

DNA REQUIREMENTS

The North American South Devon Association requires all South Devon sires to have a low-density genotype on file with the NASDA office on all sires of 2025 calves.

DNA SERVICES

All DNA services and supplies must be coordinated through the North American South Devon Association office. A NASDA, DNA Cattle Testing and Summary Form is available on the NASDA website and must be submitted with all samples. DNA samples should be submitted to NASDA, PO Box 850, Big Horn, WY 82333 and the testing form e-mailed to info@southdevon.com.



2025 NASDA Board of Directors, pictured from left to right: Back: Wyatt Lawrence, Jordan Vander Molen, Mike Steinlicht, Mike Vanden Berg and Jim Koebke. Front: Kurt Nelson, vice president; Dar Giess, Joel Popken, treasurer; Jared Mumm, president. Not pictured: David Presler and Steve Elmore.



2024 NASDJA Board of Directors: pictured from left to right: Jaxson Van Haur, Jace Peterson, Chace Terry, Lauren Zaabel, Ciera Steinlicht, Jillian Kniep, Addison Kelm, Brady Mitchell, Lindsay Strauch, Bethany Strauch and Savannah Anderson.

BODY CONDITION SCORES (BCS)

In order to calculate more accurate indexes, NASDA is encouraging members to record body condition scores and cow weights. The Beef Improvement Federation has recommended guidelines and best practices and the best time to record a BCS is at weaning. A .50 rebate will be given by NASDA to members for each BCS turned in.

LETTER N FOR 2025

The year-letter animal identification letter for 2025 is "N" and will be followed by "P" in 2026.

2025 CALENDAR HIGHLIGHTS

MIDLAND BULL TEST

April 3

Columbus, Montana
midlandbulltest.com

DLCC RANCH ANNUAL SALE

April 19

Pierz, Minnesota
dlccranch.com

NASDJA

'JUNIOR NATIONAL'

June 25-28

Alexandria, Minnesota
southdevon.com

IOWA STATE FAIR

August 9-11

Des Moines, Iowa
iowastatefair.org

NILE SOUTH DEVON & POUNDMAKER SHOW

October 10-18

Billings, Montana
thenile.org

53rd NATIONAL SOUTH DEVON SHOW

January 10-13, 2026

Denver, Colorado
nationalwestern.com

NICHOLS FARMS BULL SALE

January 24, 2026

Bridgewater, Iowa
www.nicholsfarms.biz

ELKINGTON ANNUAL PRODUCTION SALE

February 6, 2026

Idaho Falls, ID
eph bulls@hotmail.com

MEMBERSHIP

The active adult membership fee is \$100 annually. The active annual junior membership fee is \$25

Please note if you are planning to participate in a NASDA sponsored open or junior show, you must be a member in good standing with the association. Juniors will be required to pay junior dues to participate in the upcoming Junior National in Alexandria, MN.

BEEF QUALITY ASSURANCE (BQA)

The National BQA Program has placed a high priority on animal-handling issues and developed a variety of resources for producers working to improve. Online BQA self-assessment tools are available for cow/calf, stocker and feedlot producers. Find these tools and other information about the BQA program as www.BQA.org.

YOUTH EXPERIENCE APPLICATIONS

The deadline for the 2026 NASDA Youth Experience heifer application is November 8, 2025. Juniors interested in applying for the heifer can visit the junior page at www.southdevon.com. The 2026 heifer is being donated by Walnut Grove Farm and CS Livestock, Valley Falls, Kansas.

WORLD SOUTH DEVON SOCIETY UPDATE

The itinerary for the 2026 World South Devon Society Tour and Conference to be hosted in the United Kingdom, May 28-June 23 has been set. For more information www.sdhbs.org.uk.

SEEDSTOCK & COMMERCIAL PRODUCER OF THE YEAR NOMINATIONS

Nominations for Seedstock and Commercial Producer of the Year awards are due December 1. Nomination forms can be found on the NASDA website, under Forms. E-mail completed nominations to southdevon_lynn@outlook.com.

CLINT KNIEP SCHOLARSHIP

A scholarship has been created to honor the life of Clint Kniep, Mount Ayr, Iowa. Juniors who are active members of the North American South Devon Junior Association will be eligible to apply for a \$500 scholarship. The Clint Kniep Memorial Scholarship will be presented to a junior member for continuing education or to build and maintain a South Devon herd. Application forms can be found on the NASDA Junior Page. Deadline to apply is November 8, 2025. The scholarship will be awarded at the 2026 National Show. Congratulations to Ciera Steinlicht, Valley Falls, Kansas and Abby Koellner, Milton, Iowa for receiving a 2025 scholarship from the program.

IOWA STATE FAIR

The 2025 Iowa State Fair South Devon events are August 9-11. The junior show will be held August 10 at 11 a.m. and the open show will be held the next day, August 11 at 1:00 p.m. The junior event will include a heifer and bull show, followed by showmanship. Entries are due July 1. For more information, contact Jordan Vander Molen, 641-521-9917.

**ELKINGTON RANGE
RAISED ANNUAL
PRODUCTION SALE**

The Elkington Bros. Polled Hereford and South Deon 45th Annual Production Sale was held February 7, 2025 in Idaho Falls, Idaho. Twenty-six South Devon bulls averaged \$5230. Top-selling bull, EBS Elker Extra 617L, an April 2, 2023 son of EBS Elker 061H sold to Owen Ranch, Montana for \$8500. White Ranch of Utah, purchased EBS Elker Extra 534L, a March 14, 2023 son of EBS Elker 061H for \$7750. Five South Devon heifers averaged \$3075.

**NASDA PUBLICATION
ACCEPTING PHOTOS**

The NASDA South Devon Review is looking for cover, editorial and advertising photos. Categories to consider: cattle in different environments, pasture, feedlot, show and sale; people working with cattle; industry-related events; and general ranch photos. Photos should strongly represent the principals and focus of the South Devon association. Vertical or horizontal format is acceptable. NASDA will pay \$100 for photos used on the cover of the South Devon Review and \$50 for those used in South Devon articles. Photos received by NASDA are assumed to be released by the photographer and permission given to NASDA and the South Devon Review for use. Send high-resolution photos to southdevon_lynn@outlook.com.

Congratulations!



JILLIAN KNIEP

*Mount Ayr, Iowa
DLCC Lincoln 77L
2025 National South Devon Show
Champion Junior Heifer
2024 Champion Junior
National Heifer*



K & M CATTLE

*McGregor, Minnesota
DLCC Lexington 179L
2025 National South Devon Show
Champion Bull
2024 Champion Bull Western
Regional South Devon Show*



LINDA HLUSEK

*Williams Lake, British Columbia
DLCC Lovey Dovey 209L
2025 National South Devon Show
Senior Heifer Division Champion*



EDDIE WINTERS

*Zumbra Falls, Minnesota
DLCC Becca 104L
2024 Champion Female All Other
Breeds Minnesota State Fair*

All purchased in the 2024 DLCC Ranch annual production sale.

2025 33rd DLCC Ranch Production Sale
APRIL 19, 2025

**WORKING CATTLE
THAT COMPETE**

DLCC RANCH
SOUTH DEVONS | POUNDMAKERS | NAVIGATORS
www.DLCCRanch.com



Contact Jordan
641-521-9917

Join us at the 2025 Iowa State Fair
August 9-11
Open & Junior Show, Showmanship

Livin' on Lake Time



NORTH AMERICAN
SOUTH DEVON
JUNIOR ASSOCIATION

JUNE 25-28 2025
Alexandria, Minnesota

JOIN US FOR THE

Junior National Show & Leadership Conference



HOST:

The White Family
Emilee: 218-639-6941
wemilee15@gmail.com
Tonja: 218-640-1596

LOCATION:

Douglas County Fairgrounds
300 Fairgrounds Road
Alexandria, MN 56308

LODGING:

Holiday Inn
320-763-6577

AmericInn
320-421-8926

Best Western
320-762-5161

Arrowwood Resort
320-762-1124

Make your reservations early!

TENTATIVE SCHEDULE OF EVENTS

WEDNESDAY, JUNE 25

8am - 6pm Move in & set up

THURSDAY, JUNE 26

8 a.m. All cattle in place/Breakfast
9 a.m. Exhibitor meeting
10 a.m. Check-in of posters, photography, etc.
10:30 a.m. Competition begins
Noon Lunch
1 p.m. Quiz bowl
3 p.m. Ag Olympics
5 p.m. Cattle to tie-outs

FRIDAY, JUNE 27

8 a.m. Breakfast
9 a.m. Group & states photos
10 a.m. Opening ceremonies
10:30 a.m. Bred and owned show (Heifers, bulls and steers, followed by showmanship)
Noon Lunch
5 p.m. Cattle to tie-outs
6 p.m. Casey's Amusement Park

SATURDAY, JUNE 28

8 a.m. Breakfast
10 a.m. Dedication
10:30 a.m. Owned female show
Noon Lunch
3 p.m. Banquet, followed by awards ceremony



ENTRY DEADLINE
May 1, 2025

Use the Showman App to enter

2025 COMMERCIAL
PRODUCER OF THE YEAR

Gray Ranch

ISMAY, MONTANA

By Hannah Gill

For 50 years, the Gray Ranch in Ismay, Montana has been crossing South Devon bulls over their commercial cow herd. Today, the whole ranch reflects the South Devon influence from the replacement heifers to the finished beef in the freezers of the ranch's second and third generation of Grays, thus earning the title of Commercial Producer of the Year.

Robert Gray was the first generation on the Montana ranch. He was raised on the Shaw/Gray Ranch near Orin Junction, Wyoming but when some of their family land was taken by eminent domain for the Glendo Dam, Robert and his parents went looking for grass elsewhere landing them in the beautiful country of eastern Montana. The ranch was bought in 1952, the same year that Robert married his wife, Betty and was also drafted into the US Army. A manager was hired to run the ranch until four years later when Robert and Betty finally moved to Montana. At first, they ran sheep and various breeds of cattle; Herefords, Salers, Simmental and Black Angus before Robert came across some South Devon bulls at a sale in Billings, Montana.



The third generation of the Gray Ranch is raising South Devon composite cattle in Ismay, Montana.

“Dad saw the South Devon bulls and liked the looks of them so he bought, I think six of them,” says Rich Gray, and the Grays have consistently bought South Devon bulls ever since to cross over their commercial cows.

Initially, Robert was drawn to the carcass yield that South Devon offered, but soon found that they also had great stay ability and were able to withstand the harsh climate changes in eastern Montana.

That was somewhere around the late 70s and the ranch was struggling, as many others were around the time. Because of the hard times, Robert asked one of his three sons, Rich, to come back to the ranch to help. Rich and his wife, Karen, are still operating the ranch today, along with their son Borden and daughter, Beth and her husband Dax and numerous grandchildren.



The Gray Ranch family pictured from left to right: Dax, Tailey and Beth Muri, Rich, Borden, Karen, Caiden and Ella Gray.



Tailey Muri shows one of the Gray Ranch's South Devons, which have won multiple carcass merit awards.

Rich has always had a preference for red cattle and started crossing Red Angus over their first calf heifers to keep the birth weight down. Over twenty years later, Rich estimates that 80 percent of their calf crop is now red.

“I like red cattle and they seem like they just work well,” Rich says. “We use Red Angus bulls on the heifers and South Devon on the cows. It’s pretty intermingled into them now but I’d say everything at least half South Devon.”

When they started with South Devon, bulls came from Bollenbach Cattle Company out of Oklahoma, through Midland Bull Test. More recently, they look for moderate birth weight, high growth bulls from Minnesota breeders, Thompson Land and Cattle and DLCC Ranch, which works well for their mid-April calving season. Depending on the weather and grass, calves are usually weaned around 450 pounds at the end of November. The calves are then backgrounded on the ranch until around the first of March when they weigh around 600 to 625 pounds, without having to push them too hard.

Though not on a large scale, the Grays keep some cattle to feed enough beef for the family and some nearby neighbors who have become repeat customers. The carcass quality from the South Devon influence speaks for itself with multiple carcass merit awards from most of Robert and Betty’s eleven grandchildren and four great-grandchildren showing steers in 4-H every year from the time they started until they graduated high school.

“The South Devon have been doing what the Angus would like to do on the rail,” Beth says, recalling one of her grandfather’s favorite sayings. ❖



Rich Gray was part of the second generation on the eastern Montana ranch after his parents relocated from Wyoming.

“The South Devon have been doing what the Angus would like to do on the rail.”

Beth Muri
Ismay, Montana



Initially drawn to their carcass yield, the Gray Ranch started raising South Devon cattle in the late 1970s.



Diamond Plus Cattle

GACKLE, NORTH DAKOTA

By Hannah Gill

Diamond Plus Cattle has been raising registered South Devon and Poundmaker cattle amidst a combination of crop land and rolling hills in central North Dakota for over 25 years and this year are receiving the South Devon Seedstock Producer of the Year award.

South Devon cattle were introduced to the ranch by Roger Presler, who operates the ranch today along with his wife Judy, son David and daughter-in-law Dixie and eight-month-old granddaughter, Laura. David returned to the ranch in 2008 after graduating from college and has taken over most of the day-to-day operations on the ranch today.

The Presler family started in cattle and farming with Roger's father, Richard in 1946. Then, the focus was on Hereford cattle which were common to the area at the time. Roger introduced the farm to Simmentals and was raising both seedstock and commercial cattle when an opportunity arose to finish calves at a feedlot in Scott City, Kansas.

"We got to the point with the Simmentals that they were too big and just a rugged animal and I was told that people in the cities don't like steaks that are 15 inches across," Roger says. "So, we were looking to size down a little bit but still have efficiency and South Devon was suggested to me."



Judy and Roger Presler pictured with their grandchildren, Everly and Zane Brown and Laura Presler.



The South Devon body conformation allows for easier calving of higher birth weight calves, David Presler says.

Roger and his brother who ran cattle nearby partnered on the first two bulls from Dahl Land and Cattle in 1997. The resulting calf crop was good enough that in the years to follow, Roger replaced his Simmental bulls that would fall out with South Devon bulls. Now, the ranch only live covers with South Devon bulls, but still supplements with Simmental through AI.

When an opportunity arose to buy some South Devon cows from a ranch who was dispersing their South Devon herd, Roger took it, stepping back into the world of raising registered cattle. It was around when David returned to help run the ranch that they started marketing their bulls to the public.

"It started with immediate neighbors," David says. "The purebred bulls have been a product for us to use and we've got a few loyal customers that come back and buy bulls now."

Raising their own bulls to cross over their commercial herd puts the Preslers in a unique position. On the seedstock side, they are working to create a product that works for them and their customers, and on the commercial side, they are seeing in real time what that product delivers and watch it go all the way through to slaughter.



David Presler believes South Devon genetics cover bases for many producers, from easy calving to performance in the feedlot.

“We’re not just looking at weaning weight,” David says. “A lot of times when we’re selecting replacement heifers if one is on the fence on weaning weight, we don’t overlook the weaning weight, but we look at what she’s done in the feedlot and weigh that a little heavier against the weaning weight.”

Roger has been sending calves to finish in Kansas since the late 80s, he guesses, and the Presler cattle have developed a reputation and demand around the feedlot.

“It’s a two-sided thing,” Roger says. “You’ve got to have quality to start off with, but those people know how to feed them to produce that end quality.”

The marbling and carcass quality data that the Preslers have seen on their beef has outperformed other black breeds, one year peaking at 13-percent Prime grading.

“There’s intangible with the carcass quality in my opinion that the South Devon has brought,” David says.

And it’s not just the carcass quality that makes the South Devon rise to the top for David. When it comes to birth weight and ability for weight gain, he believes that the body conformation of the cows being a little bit longer backed with bigger pelvis area allows for easier calving of higher birth weight calves than typical black cattle.

While they have worked hard to clean up the udders in both the commercial and seedstock cow herds, David adds that they haven’t really had to work on “fixing”



David Presler is shown working the family's South Devon cattle with daughter Laura.

any other part of the breed beyond selecting for traits that help the end product be as profitable as it can be. Moderate birth weights, heavy emphasis on weaning weights and a preference to red hided cattle. When selecting herd sires, the Preslers don’t overlook the advantage that EPDs give them, but also take body conformation and temperament into consideration.

“I think in the cattle industry, producers are specializing a little bit more,” David says. “Cow-calf guys are cow-calf guys, feedlot guys are feedlot guys, everybody is becoming more specialized, so I think the South Devon just kind of cover bases for a lot of people. I think they’re easy calving, they perform well for the commercial guys and I think they work well in the feedlot, too, they gain well, they’re efficient, and you get to the rail and there’s carcass qualities so the South Devon just in general, is a very well-rounded breed that can shine in any of those specialized niches.” ❖

“There’s intangible with the carcass quality in my opinion that the South Devon has brought.”

David Presler
Gackle, North Dakota

THE VALUE OF A *Registration Paper*

Registering your animals can increase the value beyond the cost of the registration fees. The animal's specific performance records, heritable traits and lineage can be traced for improved selection and breeding. A registration certificate has the potential to add value to the animal and its offspring. It also shows the ancestry of each animal and provides legitimacy to the pedigree lineage.

Cattle of any quality are fairly easily marketed, but cattle that have a registration paper show that you value the time it takes to keep accurate records and the opportunity to identify, track and document the ancestry of past generations and future offspring and take pride in associating your name with animals that you breed.

Buyers can use the registration papers to aid in the decision whether to purchase an animal or not. The buyer can predict the performance and longevity of the animal by looking at the history of the sire and dam.

Though commercial cow-calf operations may not benefit in the same way as seedstock, registration papers can provide them with valued information to increase performance in their cattle. Adding a registered bull to their operation is a tool to manage production, maternal and carcass performance.

Registration certificates and the performance information provided by a breed association gives producers the opportunity to compare cattle with other cattle all over the country. It also gives an extra marketing advantage to the operation.

A cow becomes more than a cow with the extra documentation of a registration certificate. However, it is what is done with the documentation that adds any value.

A registration certificate has the potential to add value to the animal and its offspring.

Depending on the goal of the producer the registration paper can become a dictionary to selecting and breeding or a dusty document stashed in the drawer.

There are many reasons for registering your animals and buying registered stock, whether you are a breeder or producer.



Conservation and Preservation

A registry is essential in keeping the pedigrees and information on animals in a herd book to preserve the ancestry and history of the animals and the breed. The registry itself is the headquarters for the preservation of this information, and by supporting it through the registration of your animals; you are contributing to the promotion, conservation, and other programs and services that are offered to the breed association members.

Breeding

Knowing and documenting the pedigree ensures that the ancestry of an animal is known. Listing the breed makeup and breed percentages of your animals on registration papers can aid in making valuable breeding decisions.

Value

Knowing more than “she is just a cow”, when you breed quality animals utilizing top genetics, registered animals are typically more valuable than non-registered animals. When opportunities arise and you have breeding stock for sale, potential buyers will have more interest and be willing to pay a higher price because of documentation and information that is available on the animals.

Diversity

Without a registry, you won't be able to find other breeders that are breeding animals with known quality. Genetic lines can disappear, or a breed's existence can be threatened.

Marketing

The U.S. is recognized as a world leader of genetics. It is the largest exporter of embryos, semen, and registered cattle. Many countries seek these quality genetics from breeders in the U.S. and one of the requirements is they must be from registered animals. By working together and joining other like-minded breeder's, through a registry, you can take advantage of opportunities for marketing your genetics internationally.

Ownership

Registration papers can come in handy to provide proof of ownership.

Security

When you register and identify your animals with a registry, it can give you peace of mind knowing that pedigrees and information on your animals is available in the event your information is lost through some type of disaster and can easily be replaced. ❖

South Devon Around the World

NEW ZEALAND

www.southdevon.co.nz

SOUTH AFRICA

www.southdevon.co.za

CANADA

www.canadiansouthdevon.com

AUSTRALIA

www.southdevonsaustralia.com

UNITED KINGDOM

www.sdhbs.org.uk



What is a Good Bull Worth

IN 2025?

The question that ranchers, commercial cattlemen and seedstock producers have been asking for a long time now, or at least as long as we have been breeding cattle with a notion of trying to make the next generation better. What is a good bull worth?

Typically, the answer given will be something along the lines of “A good bull is worth the value of five calves he sires or two and a half times a finished steer.” It is a good answer and a good rule of thumb to follow, but it doesn’t exactly narrow down the range.

- **Weaned Steer Calves:** Weighing 523lb., these calves sell for approximately \$3.00/lb., valuing each at \$1,569. Thus, five such calves would value a good bull at about \$7,845.
- **Yearling Steers:** Weighing 874 lb., these steers sell for about \$2.00/lb., valuing each at \$1,748. Therefore, five yearlings place a good bull’s worth at about \$8,740.
- **Finished Beef Steers:** Weighing 1,400 lb., these steers are worth \$1.90/cwt live, totaling \$2,660 each. Consequently, a bull responsible for such steers would be worth approximately \$13,300 based on five offspring.

So, based on the current market, a good bull is worth somewhere between \$7,000 - \$14,000 to a commercial

cow-calf operation. Remembering of course, there are fluctuations in the market.

With the current spring bull buying season underway, producers should understand their goals for marketing calves and the genetic value to make replacement females.

Unfortunately, for many cow-calf producers, cutting costs has become a matter of survival. But when it comes to the bottom line, lower costs will get you only halfway. You must also increase the performance of and add value to your calf crop to stay competitive. Because 80% of herd improvement is directly attributable to bull selection, determining what you can pay for a bull depends on more than finding the lowest price.

Jerry Delaney, Delaney Herefords, Lake Benton, Minnesota said “The quickest way to improve a cow herd is with the right bull. He’s the biggest influence on your future.” ❖

“The quickest way to improve a cow herd is with the right bull. He’s the biggest influence on your future.”

Jerry Delaney

Delaney Herefords, Lake Benton, Minnesota



Determining what you can pay for a bull depends on more than finding the lowest price.

Bar/E Cattle Co. South Devon

2017 Seedstock Producer of the Year



Congratulations Nicole Kibler
2017 NASDA Youth Experience
Heifer Recipient of

Bar E Teddy

donated by Bar/E Cattle Co.



Heifers For Sale

Steve & Barbara Elmore

1235 W. Mt. Gilead Church Rd.
Clinton, N.C. 28328
Cell: 910-385-6200
sandbelmore@centurylink.net

HOXIE HILL FARMS

Your Source for South Devon Genetics in the Northeast



BULLS AND FEMALES FOR SALE

Mike VandenBerg

55 Ward Road, Hammond, NY 13646

(315) 744-4273 • mapleallis@gmail.com

**2023 SEEDSTOCK
PRODUCER OF THE YEAR**

KNN FARMS

Kurt & Nettie Nelson

**Poundmaker bull on test at Wisconsin Beef
Improvement Association, Platteville, WI
Sale Date: April 5, 2025
View video & information at:
DV Auction & www.wisconsinbeef.com/ontestinfo**

Females and bulls available private treaty

651-246-8774 (K) W5137 290TH AVE
651-246-8252 (N) BAY CITY, WI. 54723
knnfarmswi@gmail.com

The Next Generation

The Next Level of Genetics

The Future of KNN Farms

DLCC Ranch

PIERZ, MINNESOTA

The South Devon breed is nearly synonymous with the DLCC Ranch, the 2025 recipient of the North American South Devon Association Hall of Fame, owned by the Giess family, Pierz, Minnesota. The family's commitment to creating South Devon and South Devon-influenced cattle with excellent mothering abilities, high-quality carcass performance, gentle dispositions, and success in the show ring speaks for itself.

FAMILY VALUES

Weathering the challenges of the beef cattle industry over a span of 40 years, the Giess family has developed a herd of industry leading South Devon and South Devon composite bulls and females. When Dar Giess first moved to Minnesota from Western Kansas in 1985, he had no idea that DLCC would later become recognized worldwide as a premier South Devon seedstock



Dar Giess



2025 National South Devon Show DLCC Ranch

operation. Specifically noting the involvement of his wife Lynn, daughter Leah, son Lane and daughter-in-law Kate, Dar said. “It’s not an ‘I’ operation, it’s a ‘we’ operation.” My family and I developed this together and worked hard to make it what it is today.

As a family business, the extra effort is made to address the ever-changing needs of the operation and the customers it serves. Actively involved in the operation are son Lane, a graduate of Kansas State University with a Bachelor of Science in animal science, a Masters in genetics and a doctorate in genetics from Colorado State University. He is actively involved with the science of the operation, including breeding decisions, data evaluation, selection decisions and bull and female marketing. Kate, Lane’s wife is also a graduate of Kansas State University, a skilled photographer and digital content creator, she has helped build awareness of the DLCC brand and showcased the ranching operation through her photos. Leah, Dar & Lynn’s youngest, an Agricultural Communications graduate of Kansas State, works for an agricultural marketing agency and helps tell the DLCC story through social and print channels. She manages most of the social media and develops content strategy to reach a new and larger audience.

DIVING INTO SOUTH DEVONS

Members of the North American South Devon Association since 1987, DLCC purchased their first South Devon cattle at a herd dispersal sale at the Rich Prairie Livestock Exchange in Pierz. Thirteen bred heifers were purchased, including a heifer called DLCC Tiffany Lass 11U. She ended up being selected as the National Champion Female at the 1988 National South Devon Show in Denver, Colorado. After that, the Giess family was hooked on the South Devon breed. She was the start of a 30 plus year winning streak, where DLCC genetics

“We’ve weathered the challenges by selecting the best genetics possible each year. We never lost sight of raising marketable, quality animals.”

Dar Giess
Pierz, Minnesota



DLCC Ranch

have captured national and reserve national titles over the years. Although, helping manage the Triple H Cattle Company operation, owned by Lynn’s parents, including registered herds of Angus, Charolais and Salers, by the early 2000’s the main focus was on the South Devons. The purchase of 75 additional South Devon cows from 101 Ranch in Little Falls, solidified the foundation of the DLCC herd, well-known for un-paralleled maternal value, gentle disposition, longevity, performance and carcass traits.

GENETIC MERIT

“We’ve weathered the challenges by selecting the best genetics possible each year,” said Dar. “We never lost sight of raising marketable, quality animals.”

The DLCC operation has grown over the years and in addition to the success in the show ring, DLCC genetics were purchased for a research cycle at the U.S. Meat Animal Research Center and have been sold to cattlemen from over 30 states, four Canadian provinces, Australia, New Zealand, Brazil, Mexico and Paraguay. The annual spring sale in April is the pinnacle of years of breed development.

The guiding principles to the DLCC operation have remained a balanced genetic approach, by maintaining emphasis on growth and carcass merit, focusing on eye-appeal and udder quality and emphasizing the effects of hybrid vigor through the production of DLCC South Devon composites, Dar said.



Lane Giess



Leah Giess

The DLCC Ranch has utilized artificial insemination since the early 1990's and began doing carcass ultrasounds in the early 2000's. For the past four years, DLCC has offered genomically enhanced EPD's on all bulls selling in the spring sale and private treaty. The information is sent to the International Genetic Solutions (IGS) a multi-breed genetic evaluation. "The South Devon breed is objectively challenged when it comes to proper genetic evaluations, due to it being a smaller breed population, so we wanted to capture as much data as possible to help with our ability to market bulls," said Lane. "The EPDs we get are comparable to any breed association that also uses IGS for multi-breed EPDs. Because of all of the extra data that comes with IGS, we're able to have more accurate, better evaluated animals than ever before."

MAXIMIZING HETEROSIS

DLCC started out marketing performance bulls and selling show cattle, but soon found a niche breeding

and selling composite South Devon bulls to commercial cattlemen. "About 15 years ago, we started introducing more composites into the system, and we quickly learned that half-blood South Devons work really well," Lane said. "We also have composites with Angus, Simmental and Red Angus, marketing them as an opportunity for commercial cattle producers to use South Devon genetics."

A major selling point for DLCC is crossing other breeds with South Devons to yield calves with maximum heterosis. South Devon cattle grow fairly quickly and have outstanding mothering abilities and milk, according to Lane. Carcass performance is another selling point, as South Devons historically marbled similar to Angus cattle.

"We wanted to keep the maternal qualities of our South Devons, but have added Simmental genetics into the mix for good feet, good udders, disposition and moderate frame size," Dar said. "We use Simmental on the purebred South Devon females, the half-South Devon and half-Angus females. We're also adding in Angus or Red Angus bulls for a three-way cross."

"South Devons fit into a composite system and do a lot of things very well, while not being extreme in any area. We know that cross-breeding three breeds captures maximum heterosis, so if you want to capture the most dollars and complementary characteristics, then South Devon composites can be the answer," said Lane.

OPPORTUNITY

Once cattle producers have worked with South Devons, they typically stay with the breed, said Dar. "South Devons are getting more respect from bigger outfits. If you want cattle with a black or red hide without a white face, the opportunities are endless."



2025 Hall of Fame. Pictured from left to right: NASDA Ambassador, Ciera Steinlicht, Leah, Lynn, Dar, Lane and Kate Giess, NASDA Ambassador, Addison Kelm.

South Devons are also an excellent opportunity for young cattle producers who are looking for an affordable breed to get into and sell cattle. “You can invest \$50,000 in the South Devon breed and be selling bulls the next year,” Dar said.

PRIORITIES

The Giess family has always prioritized the promotion of the South Devon breed through the North American South Devon Association. More importantly, they have been avid and demanding promoters of youth activities in the breed and throughout the cattle industry. Lane, Kate and Leah are past long-time members of the North American South Devon Junior Association and until they graduated from the program, had participated in all of the junior nationals and leadership conferences. They held leadership positions within the junior association and both Lane and Dar have been national board and committee members. Dar has held the position of president for multiple years. He also served two terms as the World South Devon Society president. They have organized and promoted shows for the breed, donated heifers for the youth experience heifer programs at the Minnesota Beef Expo and the national donation program, hosted juniors from other societies, including the UK, Australia and New Zealand and planned and executed the World South Devon Tour in the U.S. They have hosted multiple national tours and field days and continue to place an emphasis on association activities. Lynn continues to compile and publish the annual South Devon Review, works with the association board and organizes promotion, marketing, shows, fund-raisers and junior activities. ❖



DLCC Tiffany Lass 11U, the start of the DLCC Ranch South Devon program.



Kate Giess



Clint Kniep Scholarship

The North American South Devon Association and the Kniep family is pleased to announce the successful recipients of the Clint Kniep memorial scholarship for the academic year 2025. This scholarship program exemplifies our unwavering commitment to fostering education and supporting outstanding individuals in their pursuit of academic excellence and dedication to the South Devon breed.

The Clint Kniep Memorial Scholarship is a merit-based scholarship aimed at recognizing and encouraging students who demonstrate exceptional academic achievements, leadership qualities, and a strong commitment to the South Devon breed. Through this program, the Kniep family seeks to contribute to the development of future leaders and professionals who will make meaningful contributions to the breed and especially to the North American South Devon Junior Association.

These remarkable individuals were chosen from a pool of highly qualified applicants based on their outstanding achievements, extracurricular activities, and demonstrated commitment to making a positive impact on the association and the breed.

"We're incredibly proud of the caliber and the leadership showcased by the recipients of this year's scholarship and we look forward to seeing their future successes," said Jillian Kniep.

Ciera Steinlicht, Valley Falls, Kansas has been a devoted junior member for the past 16 years. She has participated in each and every one of the Junior Nationals over that time period and is currently serving as the NASDA ambassador. She has served in leadership roles in 4-H, FFA and currently serves as the Vice President of the North American South Devon Junior Association, along with being co-chair of the NASDA membership and junior committee. Ciera was the recipient of the 2024 'Love Like Kniep Award' at the Junior National in Holton, KS. "I have spent a lot of time with this breed and plan to spend a lot more. I would like to help improve the breed and draw more members to it," she said. She is currently studying Agribusiness at Highland Community College.

Abigail Koellner, Milton, Iowa is a freshman at Iowa State University, studying agricultural studies, with a focus on animal science, agronomy and ag business. She



Abigail Koellner, Milton, Iowa



Gnech Farms, Malin, Oregon and JVM Cattle Company, Pella, Iowa donated the sale of EGR Memory 400M to the Clint Kniep Scholarship fund at the 2025 National South Devon events held in Denver, Colorado. Pictured from left to right: Ciera Steinlicht, Emma Gnech, Gino Gnech, Cade Barney, Jaylene Young, Jacki Gnech, Tayler Vander Molen, Pete Hayse, Jillian Kniep, Jordan Vander Molen and Addison Kelm. Purchased by Hayse Livestock, Maryville, MO, Kelm Farm, Wadena, MN and Walnut Grove Farm, Valley Falls, KS.

is a new member to the association and hopes to start a herd of South Devon cattle. She has also held leadership roles in 4-H and FFA and has been active in the National Honor Society. "I will use this scholarship for my college tuition so I can learn new aspects of breeding and managing a herd, as well as a business," she said. "I will be able to further educate myself and bring systems home to try out with my herd. I have learned lots already from fellow South Devon family and hope to continue to learn new things." ❖



Ciera Steinlicht accepting the 2024 'Love Like Kniep' award at the 2024 NASDJA Junior National.



Ciera Steinlicht, Valley Falls, Kansas accepting the scholarship at the 2025 NASDA awards ceremony. Pictured with Jillian Kniep, Pete Hayse and Addison Kelm, NASDA ambassador.

2025 NORTH AMERICAN
SOUTH DEVON ASSOCIATION

Youth Heifer Recipients

ANDREA SMITH
& LETTIE BROWN

ANDREA SMITH

Andrea Smith, Henryetta, Oklahoma is one of two recipients of South Devon heifers donated by Hoxie Hill Farm, Hammond, NY for the North American South Devon Association Youth Heifer Program.

Andrea completed an application detailing her skills, ability and desire to raise, care for and learn about the breed. She shared her goals and experience in 4-H and FFA and submitted two letters of recommendation as to her character and ability for care for the heifer. "I want to start my own herd and explore other breeds, to stand alone or that cross well with other breeds," she said. Brooke Carlson, Claremore agricultural teacher said, "Andrea has accepted the responsibility of taking care of her animals from and early age. She takes great pride and ownership in whatever projects she tackles."



2025 NASDA Youth Heifer recipient, Andrea Smith, Henryetta, OK with HHF Maple 17M, an April 3, 2024 daughter of DLCC Foundations 52F, donated by Hoxie Hill Farm, Hammond, NY.



2025 NASDA Youth Heifer recipients and sponsors pictured at the NASDA banquet and awards ceremony in Denver, CO from left to right: Ciera Steinlicht, NASDA Ambassador, Mike & Krisie Vanden Berg, Hoxie Hill Farm, Hammond, New York, recipients Lettie Brown, Andrea Smith, Gail Johnson and Jim Sadler, Sadler Cattle Company, Anoka, Minnesota, and Addison Kelm, NASDA Ambassador.

LETTIE BROWN

Lettie Brown, Richville, New York was also a 2025 recipient of a heifer donated by Sadler Cattle Company, Anoka, MN and Hoxie Hill Farm, Hammond, NY.

Ashley Rich, Moss Ridge Farms, gave a glowing report of Lettie's aspirations and ability to care for and excel in the NASDA Youth Heifer Experience Project. "Lettie has a wonderful work ethic and dedication to her passion for agriculture as a young person. Her responsibility and diligence can be easily seen in the care she gives her cattle and the respect she shows those around her."

"I believe I can help promote women in the cattle industry, along with giving recognition to the South Devon breed in my area. My dream is to have a South Devon herd of my own. I will keep this heifer to show and build my herd," said Lettie.



2025 NASDA Youth Heifer recipient, Lettie Brown, Richville, NY with HHF Kandi 10M, a March 8, 2024 daughter of DLCC Judge 3J, donated by Sadler Cattle Company, Anoka, MN and Hoxie Hill Farm, Hammond, NY.

2024

Iowa State Fair

DES MOINES, IOWA



Champion Bull

JVM Maverick 450M
Sire: WGF Hondo – BD: 2/26/24
JVM Cattle Company, Pella, IA



Reserve Champion Bull

DLCC Lexington 179L
Sire: DLCC Gold Dust 64G – BD: 7/10/23
DLCC Ranch, Pierz, MN & K & M Cattle, McGregor, MN



Champion Female

BC Calico 6545D
Sire: DLCC Yosemite 44A – BD: 2/24/16
JVM Cattle Company, Pella, IA



Reserve Champion Female

WF Lulu 14L
Sire: WF Wishful Thinking – BD: 6/11/23
White-Feela Farms, Wadena, MN



Champion Poundmaker Bull

JVM Landslide 360L

Sire: JVM Easton 750E – BD: 3/17/23

JVM Cattle Company, Pella, IA



Reserve Champion Poundmaker Bull

WF Blackjack 4M

Sire: BAAL Break the Bank – BD: 2/25/24

White-Feela Farms, Wadena, MN



Champion Poundmaker Female

WF Dejavu

Sire: MJB Midnight Rider R208L – BD: 4/10/16

White-Feela Farms, Wadena, MN



Champion Junior Female

BC Calico 6545D

Sire: DLCC Yosemite 44A – BD: 2/24/16

Trice Vander Molen, Pella, IA



Reserve Champion Junior Female

WGF Lulu 321L

Sire: WGF Klaus – BD: 6/2/23

Ciera Steinlicht, Valley Falls, KS



Reserve Champion Junior Bull

KNN Mac & Cheese 31M

Sire: KNN Ranger 37T – BD: 4/2/24

Oakley Yarwood, Bay City, WI



Champion Poundmaker Junior Female
 JVM Lilly 315L
 Sire: JVM Easton 750E – BD: 3/8/23
 Lauren Zaabel, Newton, IA



Reserve Champion Poundmaker Junior Female
 EGR Karisma
 Sire: JVM EGR Hollister 075H – BD: 12/15/22
 Ciera Steinlicht, Valley Falls, KS



Champion Poundmaker Junior Bull
 JVM Landslide 360L
 Sire: JVM Easton 750E – BD: 3/17/23
 Trice Vander Molen, Pella, IA



Reserve Champion Poundmaker Junior Bull
 WGF Loki 0321L
 Sire: WGF Klaus – BD: 9/5/23
 Ciera Steinlicht, Valley Falls, KS

SHOWMANSHIP

PEEWEE

Champion
 Trice Vander Molen

Reserve
 Fletcher Owen

JUNIOR

Champion
 Oakley Yarwood

Reserve
 Lane Kitmann

INTERMEDIATE

Champion
 Addie Kelm

Reserve
 Jace Peterson

SENIOR

Champion
 Ciera Steinlicht

Reserve
 Lauren Zaabel



IA State Fair Showmanship, pictured from l to r: Lauren Zaabel, Ciera Steinlicht, Jace Peterson, Addie Kelm, Lane Kitzmann, Oakley Yarwood, Fletcher Owen and Trice Vander Molen.



NASDA Ambassadors, Ciera Steinlicht, Valley Falls, KS and Addison Kelm, Waseca, MN



Iowa State Fair Champion Beef Herdsman
*White-Feela Farms
Wadena, MN*

2024

MN Beef Expo

ST. PAUL,
MINNESOTA



Grand Champion Female
*WS Lulu 301L
Sire: DLCC High Class 63H – BD: 3/10/23
Megan Fellbaum, Swanville, MN*



Reserve Champion Female
*KNN Meka 1M
Sire: WS Proclamation E202 – BD: 2/11/24
Oakley Yarwood, Bay City, WI*

Kickin' It in Kansas

June 26-June 29, 2024



2024 NASDJA Junior National Participants



2024 Junior National Show Golden Pitchfork
Wisconsin



2024 Junior National Show Dedication
The Kniep Family, Mount Ayr, Iowa



Premier Exhibitor
Ciera Steinlicht, Valley Falls, KS



Premier Breeder
JVM Cattle Company, Pella, IA



Junior Herdsman
Jace Peterson, Pella, IA



2024 Heartland Challenge
Emma Gnech



Marketing
Peewee, Trice Vander Molen
Junior, Kannin Sage
Intermediate, Chace Terry
Senior, Emma Gnech



Poster
Peewee, Trice Vander Molen
Junior, Jaxson Van Haur
Intermediate, Lindsey Strauch
Senior, Emma Gnech



Speech
PeeWee, Trice Vander Molen
Junior, Jaxson Van Haur
Intermediate, Chace Terry
Senior, Emma Gnech



Photo
Peewee, Trice Vander Molen
Junior, Owen Kelm
Intermediate, Addison Kelm
Senior, Emma Gnech



Quiz Bowl
Peewee, Trice Vander Molen
Junior, Jaxson Van Haur
Intermediate, Chace Terry
Senior, Emma Gnech



Showmanship

Senior: Ciera Steinlicht, reserve, Emma Gnech, champion. Intermediate: Lindsay Strauch, reserve, Jace Peterson, champion. Junior: Owen Kelm, reserve, Jaxson Van Haur, champion. Pee Wee: Trice Vander Molen, champion. Not pictured: Rory Fick, reserve.



Champion Female

DLCC Lincoln 77L
Sire: DLCC Gold Dust 64G – BD: 3/31/23
Jillian Kniep, Mount Ayr, IA



Reserve Champion Female

Zoey 2385L
Sire: WR Eclipse 702E – BD: 7/23/23
Jaxson Van Haur, Valier, MT



Champion Poundmaker Female

ELS Princess of Fury 39K
Sire: VCR 711E Convoy 41H – BD: 4/2/22
Lindsey Strauch, Fairchild, WI



Reserve Champion Poundmaker Female

JVH MS Lucy 36L
Sire: BC Progress 315U – BD: 3/9/23
Jaxson Van Haur, Valier, MT



Champion Bred and Owned Female
 WGF Lulu
 Sire: WGF Klaus – BD: 6/2/23
 Ciera Steinlicht, Valley Falls, KS



Reserve Champion Bred and Owned Female
 WF Karisma 2K
 Sire: WF Wishful Thinking – BD: 2/8/22
 Brady Mitchell, Detroit Lakes, MN



Champion Bull
 JVM Legendary 352L
 Sire: JVM Easton 750E – BD: 3/12/23
 Trice Vander Molen, Pella, IA



Reserve Champion Bull
 MF Moe 2M
 Sire: JVM Easton 750E – BD: 5/13/24
 Brady Mitchell, Detroit Lakes, MN



Champion Poundmaker Bull
 JVM Landslide 360L
 Sire: JVM Easton 750E – BD: 13/17/23
 Trice Vander Molen, Pella, IA



Champion Steer
 JVM Lil Wayne 375L
 Sire: Fight for Trump – BD: 3/12/23
 Ciera Steinlicht, Valley Falls, KS



Champion Adult Showmanship
Alyssa Mitchell, Detroit Lakes, MN



Graduating Seniors
Emma Gnech, Malin, OR and accepting the award for Layle McClenathan, Brooklyn, IA is Brynlee Sage, Osceola, IA.

HOST:

The Steinlicht Family

THANK YOU SPONSORS:

- C/N Ranch
- Cactus Engraving
- CS Livestock
- Contact Ground Source
- Claas
- Capstan AG
- Denison State Bank
- DLCC Ranch
- Ty Ellerman
- Ellis Boys
- Fick Cattle
- Finer Than A Frog Hair Bar & Grill
- Foster Ford, Inc.
- Gnech Farms
- HK South Devon
- Hollis Truck Line
- Holton Livestock Exchange, Inc.
- Hook Farms
- Jackson Farmers Inc.
- JVM Cattle Company
- Kearney & Son, Inc.
- Kelm's BBQ
- Kelm Family
- Travis & Margie McConnaughey
- Nebraska Harvest Center
- Rhea Lana's of Topeka
- Rustic Spur
- Sadler Cattle Company
- Pamela & Denny Snodgrass
- The Elevator Bar & Grill
- TSC
- Umbarger Show Feeds
- Walmart
- Walnut Grove Farm
- White-Feela Farms
- Carol Wilken
- 785 Deals

JVM Cattle Company

Bulls, Females, Embryos and Semen available year-round from the top genetics in the breed.

South Devon
Enhancing Heterosis

Diamond Plus Cattle

6161 56th Avenue SE | Gackle, ND 58442

David & Dixie Presler | 701-320-6934
super_dave_03@hotmail.com

Roger & Judy Presler | 701-485-3505
dakotadpc@daktel.com

JORDAN, TAYLER, TRICE & BREXTON VANDER MOLEN

1180 127th Street
Pella, IA 50219
(641) 521-9917
jordanjvm@gmail.com

JVM CERTAINLY 410M

f Like our Facebook page at JVM Cattle Company

Elkington
Polled Herefords & South Devon

CONTACT

Keith Elkington (Home)
208-523-2286
(Cell) 208-521-1774

Layne Elkington
(Cell) 208-681-0765

Brent Elkington (Home)
208-523-6461

Eric Elkington
(Cell) 208-881-4014

Range raised Polled Hereford and South Devon Cattle Raised at High Elevation in the Deserts of Eastern Idaho (annual precipitation 12 inches a year).

Bred to thrive on sparse feed with the need to travel for water.

We sell 25 to 30 range-raised coming two-year-old bulls on the first Friday in February every year and 5 to 10 bred heifers.

We are a short distance from Jackson Hole Wyoming and Yellowstone National Park. We invite you to come and visit if you are in the area. We will show you the cattle and take you fishing.

SAVE THE DATE *Annual Sale*
February 6, 2026



**EBS ELKER
EXTRA 534L
(222180)**

- Birthdate: 3/14/23
- Black South Devon Bull, Big, Long and Thick
- Used AI – First Calves in March
- No Faults
- BW: 80 – SC 41.5 – PAP 40
- Semen Available

NATIONAL WESTERN STOCK SHOW
2025
Parade of Champions
DENVER, COLORADO



Champion Bull

DLCC Lexington 179L

Sire: DLCC Gold Dust 64G – BD: 7/10/23

DLCC Ranch, Pierz, MN & K & M Cattle, McGregor, MN



Reserve Champion Bull

WLLC Maverick 16M

Sire: DLCC Gold Dust 64G – BD: 1/21/24

Wyatt Lawrence, Princeton, MN



Champion Female

EGR Little Freak 523L

Sire: JVM Easton 750E – BD: 2/1/23

Gnech Farms, Malin, OR



Reserve Champion Female

WR Sugar 22M

Sire: WR Eclipse 702E – BD: 5/15/24

Peyton Volkman, Cut Bank, MT



Champion Poundmaker Bull

FCC SM Kingston K3

Sire: KNN Undenied 4H – BD: 9/14/22

Fick Cattle, Maiden Rock, WI



Reserve Champion Poundmaker Bull

JVM Landslide 360L

Sire: JVM Easton 750E – BD: 3/17/23

JVM Cattle Company, Pella, IA



Champion Poundmaker Female

JVM Certainly 410M

Sire: NIO Prestige 0130 – BD: 3/5/24

JVM Cattle Company & Lower Grove Farm, Pella, IA



Reserve Champion Poundmaker Female

DLCC Marah 80M

Sire: DLCC Everest 50E – BD: 4/3/24

DLCC Ranch, Pierz, MN



Champion Cow/Calf Pair

ELS Princess of Fury

Sire: VCR 711E Convoy 41H – BD: 4/2/22

Lindsey Strauch, Fairchild, WI & Hidden Paradise Ranch, Eau Claire, WI



Champion Junior Heifer

DLCC Lincoln 77L

Sire: DLCC Gold Dust 64G – BD: 3/31/23

Jillian Kniep, Mount Ayr, IA

Sponsored by: Zimmer Land & Livestock, Bay City, WI



Reserve Champion Junior Heifer
 BC Laramie 3609L; Sire: MJB Extra 771E – BD: 4/18/23
 Ciera Steinlicht, Valley Falls, KS
 Sponsored by: Popken South Devon, Swanville, MN



Champion Poundmaker Junior Heifer
 CM Onyx; Sire: NIO Prestige 0130 – BD: 3/20/24
 Carlee McCracken, Alva, OK
 Sponsored by TWL Livestock, Blockton, IA



Reserve Champion Poundmaker Junior Heifer
 JVM Lilly 315L
 Sire: JVM Easton 750E – BD: 3/8/23
 Lauren Zaabel, Pella, IA
 Sponsored by: Gnech Farms, Malin, OR

Special Honors

Premier Breeder & Exhibitor
 DLCC Ranch
 Pierz, MN

SHOWMANSHIP

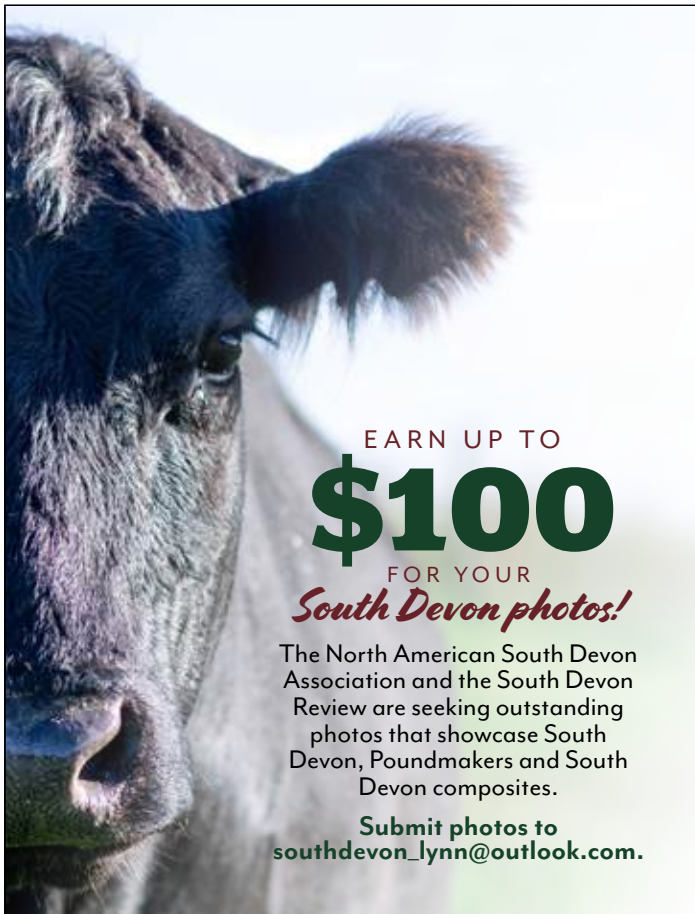


Champions pictured from left to right:

- **RESERVE SENIOR, Ciera Steinlicht**, Valley Falls, KS, sponsored by Bar E Cattle, Clinton, NC
- **CHAMPION SENIOR, Zane Downey**, Whitehall, MT, sponsored by White-Feela Farms, Wadena, MN
- **RESERVE JUNIOR, Julie Damman**, Melbourne, IA, sponsored by Hayse Livestock, Mount Ayr, IA
- **CHAMPION JUNIOR, Andrea Smith**, Henryetta, OK, sponsored by Walnut Grove Farm, Valley Falls, KS



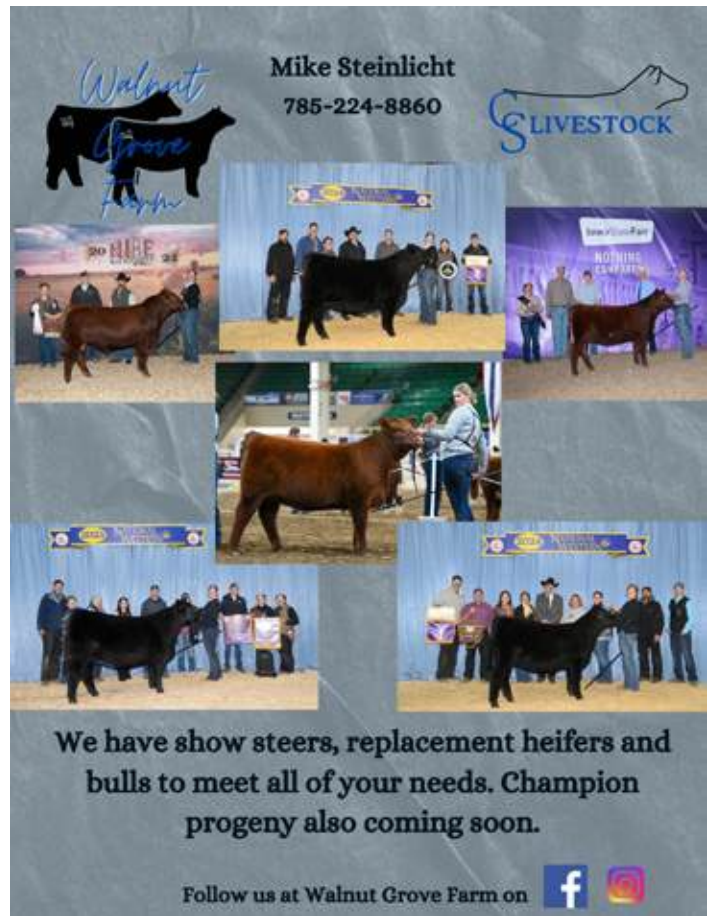
GOLDEN COMB AWARD WINNER
Jace Peterson, Pella, IA
 Sponsored by: DLCC Ranch, Pierz, MN



EARN UP TO
\$100
 FOR YOUR
South Devon photos!

The North American South Devon Association and the South Devon Review are seeking outstanding photos that showcase South Devon, Poundmakers and South Devon composites.


Submit photos to
southdevon_lynn@outlook.com.



Walnut Grove Farm
 Mike Steinlicht
 785-224-8860

LIVESTOCK

We have show steers, replacement heifers and bulls to meet all of your needs. Champion progeny also coming soon.

Follow us at Walnut Grove Farm on  



You can view or purchase our quality South Devon Genetics at the National Show and Private Treaty.

2025 calves sired by
DLCC Gold Medal 104G
KNN Frank's Red Hot 9K
Nichols Black Jac DSH024

Looking Towards the Future

Semen, Bulls Bred and Open Females for Sale

Joel or Robert Popken
 33360 220th Street • Swanville, MN 56382
 (320) 547-2202 • popkensouthdevon@outlook.com

NORTHERN INTERNATIONAL LIVESTOCK EXPOSITION

2024

Parade of Champions

BILLINGS, MONTANA



Champion Bull

DLCC Lexington 179L
 Sire: DLCC Gold Dust 64G – BD: 7/10/23
 DLCC Ranch, Pierz, MN & K & M Cattle, McGregor, MN



Reserve Champion Bull

JVM Maverick 450M
 Sire: WGF Hondo – BD: 2/26/24
 JVM Cattle Company, Pella, IA



Champion Female

WF Lulu 14L
 Sire: WF Wishful Thinking – BD: 7/3/23
 White-Feela Farms, Wadena, MN



Reserve Champion Female

BC Calico 6545D
 Sire: DLCC Yosemite 44A – BD: 2/24/26
 JVM Cattle Company, Pella, IA



Champion Poundmaker Bull

JVM Landslide 360L

Sire: JVM Easton 750E – BD: 3/17/23

JVM Cattle Company, Pella, IA



Reserve Champion Poundmaker Bull

WF Blackjack 4M

Sire: BAAL Break the Bank ET – BD: 2/5/24

White-Feela Farms, Wadena, MN



Champion Poundmaker Female

WF Mango 3M

Sire: JVM Fireball 865F – BD: 2/5/24

White-Feela Farms, Wadena, MN



Reserve Champion Poundmaker Female

JVH MS Lucy 36L

Sire: BC Progress 315U – BD: 3/9/23

Jaxson Van Haur, Valier, MT



Champion Junior Heifer

EGR Mary Lou 425M

Sire: NIO John Wick 0111 – BD: 4/2/24

Cade Barney, Klamath Falls, OR



Reserve Champion Junior Heifer

JVH MS Lucy 36L

Sire: BC Progress 315U – BD: 3/9/23

Jaxson Van Haur, Valier, MT



Champion Junior Bull
JVM Maverick 450M
Sire: WGF Hondo – BD: 2/26/24
Julie Damman, Pella, IA



Reserve Champion Junior Bull
WGF Loki 0321L
Sire: WGF Klaus – BD: 9/5/23
Ciera Steinlicht, Valley Falls, KS



The Koebke Family
Jim & Krisanne Koebke
33 Koebke Rd., Dudley, MA 01571
Jim cell 508.245.7984
Kris cell 508.245.8826

***Raised & Grazed
Right Here!***

WALNUTLANEFARM.COM



K&M CATTLE

Simangus  South Devon

Matt & Kindra Wayrynen

218-768-3367

FACES & PLACES



Jillian Kniep, Mount Ayr, IA accepts congratulations from the judge at the 2024 Junior National in Holton, Kansas.



NASDA Youth Ambassador, Addison Kelm represented the South Devon breed at the 2024 Minnesota State Fair.



NASDA Youth Ambassadors, Ciera Steinlicht, Valley Falls, KS and Addison Kelm, Waseca, MN during the 2024 Parade of States at the Junior National.



Rory Fick, Maiden Rock, WI and Brexton Vander Molen, Pella, IA at the 2024 Junior National.



NASDJA Junior board members at the National Show in Denver, Colorado, from left to right, front row: Addison Kelm, Jillian Kniep and Ciera Steinlicht. Back row: Lindsey Strauch, Bethany Strauch, Lauren Zaabel and Jace Peterson.

Send us a pic! Submit your high-resolution photos for consideration to southdevon_lynn@outlook.com.

Northern States

SOUTH DEVON ASSOCIATION

The NSSDA welcomes all South Devon and cattle enthusiasts. The NSSDA is passionate about the breed and diligently works on junior involvement, connecting seedstock producers with commercial cattlemen and promoting the breed as a viable outcross.

FOR MORE INFORMATION CONTACT:

Joel Popken, President

(320) 547-2202, popkensouthdevon@outlook.com

Nettie Nelson, Secretary

(715) 594-3805, knnfarmswi@gmail.com

JOIN US IN 2025

WBIA Bull Test

Platteville, WI, April 5

Midland Bull Test

Columbus, MT, April 3

DLCC Ranch Production Sale

Pierz, MN, April 19

NASDJA Junior National

Alexandria, MN, June 25-28

Minnesota State Fair

St. Paul, MN, August 21

NSSDA Field Day

McGregor, MN, September 6



Congratulations Madison Holtz, Little Falls, MN – 2024 Winner of the MYBEP South Devon Heifer, KMC Miss Patriot 28M, an April 17, 2024 daughter of DLCC Hoo Doo 26H donated by K & M Cattle, McGregor, MN.

In God We Trust! Philippians 4:13

Nance Auction Service

"No Matter How Big or Small, We Do Them All"

Whatever breed you raise...

Wherever you live...

Whether you sell a dozen or a hundred head...

At every event, we deliver the same excellent service that our sellers and buyers have come to expect.

Booking Registered Livestock Sale Dates NOW!

Also Specializing in Farm Auctions, Real Estate & Liquidations



Col. Bill Nance
Licensed & Bonded
Cattle Order Buyer
Ring Service &
Livestock Judging

417.214.0093

NanceAuctionService.com

nanceauctionservice@yahoo.com
Sheldon, MO



MR COPPER SAMPSON 508C #208902



SBCC HICKORY 0156 #218531

SHOWBOAT CATTLE CO.

Efficient Grass-Raised Outcross Genetics

Semen available on several outcross bulls stored at KABSU for immediate delivery.

Charles, Lauren & Chace Terry
Winchester, KS (785) 224-9565
boat@showboatco.com

CANADIAN GENETICS FROM SAMPSON MCGREGOR AVAILABLE IN THE U.S.



SHOWBOAT Media Co.

LAUREN TERRY
Professional Livestock Photography
showboatmediaco.com • (785) 231-9424

California

TM LIVESTOCK

BRIAN, JO & TRAVIS MONIZ
6990 NORMAN ROAD
PRINCETON, CA 95970
OUTLAWRODEO@GMAIL.COM
HERD PREFIX: TML

Colorado

DOUBLE RL CATTLE COMPANY

5180 HIGHWAY 62
RIDGWAY, CO 81432
970-626-5485
LAURA@RRLRANCH.COM
HERD PREFIX: DRL

DEBBIE GRAY

14499 RAPID CREEK ROAD
HOTCHKISS, CO 81419-9438
970-872-9373
HERD PREFIX: DBM

LANE & KATE GIESS

5406 SECOND AVENUE
TIMNATH, CO 80547
320-293-1647
HERD PREFIX: DLCC

Idaho

ELKINGTON BROS & SONS

KEITH ELKINGTON
5080 EAST SUNNYSIDE RD
IDAHO FALLS, ID 83406
208-523-2286
EPHRBULLS@HOTMAIL.COM
HERD PREFIX: EBS

GEM VALLEY CATTLE

KAID PANEK
141 CASCADE QUEY
SODA SPRINGS, ID 83406
801-361-8506
KAIDPANEK@GMAIL.COM
HERD PREFIX: GVC

Iowa

G & S SOUTH DEVONS

GARY MILLER
63777 GALVESTON ROAD
ATLANTIC, IA 50022
712-243-5098
HERD PREFIX: GS

GEM SOUTH DEVONS

DR. BARBARA HARRE
13150 106 AVE
DAVENPORT, IA 52804
563-381-2294
BHARRE@AOL.COM
HERD PREFIX: GEM

HILL CREST SOUTH DEVONS

SHARON & SHAWN VAN WYK
401 460TH AVE
GRINNELL, IA 50112
641-593-6674
VANWYKWOODBLD@IOWATELECOM.NET
HERD PREFIX: EVW
HALL OF FAME

JVM CATTLE COMPANY

JORDAN & TAYLER VANDER MOLEN
1180 127TH STREET
PELLA, IA 50219
641-521-9917
JORDANJVM@GMAIL.COM
HERD PREFIX: JVM

KUNTZ & SONS

4082 170TH STREET
BROOKLYN, IA 52211
641-522-7179
HERD PREFIX: SLF
HALL OF FAME

LOWER GROVE FARM

1518 168TH STREET
NEW SHARON, IA 50207
641-780-9928
TERPYJR@GMAIL.COM
HERD PREFIX: WISR

MAR-BET FARM

MARTY & BETTY VANDER MOLEN
1186 133RD STREET
PELLA, IA 50219
641-594-4280
MARBET@NETINS.NET
HALL OF FAME

NEDERHOFF CATTLE COMPANY

AUSTIN & VICTORIA NEDERHOFF
710 MONROE STREET
WELLSBURG, IA 50680
319-939-3323
NEDERHOFFCATTLECOMPANY@GMAIL.COM
HERD PREFIX: NCC

NICHOLS FARMS LTD

2188 CLAY AVE
BRIDGEWATER, IA 50837
641-369-2829
NICHOLS@NICHOLSFARMS.BIZ
HERD PREFIX: DS

TWL LIVESTOCK

TODD WEBER
3255 STATE HWY 2
BLOCKTON, IA 50836
641-788-8033
HERD PREFIX: TWL

Kansas

SHOWBOAT CATTLE COMPANY

CHARLES TERRY
13266 WELLMAN RD
WINCHESTER, KS 66097-9718
785-224-9565
BOAT@SHOWBOATCO.COM
HERD PREFIX: SBCC

WALNUT GROVE FARM

MIKE & STEPHANIE STEINLICHT
16764 NORTH CEDAR ROAD
VALLEY FALLS, KS 66088
785-224-8860
GARRETTANDCO2000@YAHOO.COM
HERD PREFIX: WGF

WRIGHT RANCHES

CHAD WRIGHT
PO BOX 160
JENNINGS, KS 67643
406-780-1342
CDWBCB71@AOL.COM

Kentucky

WINDY CREEK FARMS

MARK HAYNES
317 FOX CHASE DRIVE
ELIZABETHTOWN, KY 42701
270-769-1383
MARK@GOLDSTARREALTYKY.COM
HERD PREFIX: KSP

Massachusetts

THE KOEBKE FAMILY

JIM & KRISANNE KOEBKE
33 KOEBKE ROAD
DUDLEY, MA 01571
508-245-7984
AMERADAHOLSTEINS@CHARTER.NET
HERD PREFIX: JKK

Minnesota

ALAINA CHUTE

36468 405TH LANE
AITKIN, MN 56431
218-670-0194
AJCHUTE1@GMAIL.COM
HERD PREFIX: AJC

DLCC RANCH

DAR & LYNN GIESS
33424 183RD STREET
PIERZ, MN 56364
320-249-2130
DLCCRANCH@OUTLOOK.COM
HERD PREFIX: DLCC
HALL OF FAME

DLCC WHIPLASH SYNDICATE

LYNN GIESS
33424 183RD STREET
PIERZ, MN 56364
DLCCRANCH@OUTLOOK.COM

J BOONE HAWLEY

33424 183RD STREET
PIERZ, MN 56364

J2 FARMS

AMANDA JOHNSON
41639 JIVARO STREET NW
OGILVIE, MN 56358
736-645-7997
AMJOHN816@GMAIL.COM
HERD PREFIX: JT

K & M CATTLE

MATT & KINDRA WAYRYNEN
31936 STATE HWY 65
MCGREGOR, MN 55760
218-839-0396
WAYRYNENK@GMAIL.COM
HERD PREFIX: KMC

WYATT LAWRENCE

12147 293RD AVENUE NW
PRINCETON, MN 55371
463-389-0625
WYATHTHERF99@GMAIL.COM
HERD PREFIX: WLLC

MAPLE RIDGE FARM

MATTHIAS J NOVAK
8155 380TH AVE
HILLMAN, MN 56338
320-355-2129
NOVAKFARMS@ICLOUD.COM
HERD PREFIX: MRF

MARTIN CATTLE

JOSEPH & STACI MARTIN
46492 CANNON RIVER ROAD
WATERVILLE, MN 56096
612-644-0240
STACIT80@GMAIL.COM
HERD PREFIX: MC

JOEL POPKEN

33360 220TH STREET
SWANVILLE, MN 56382
320-547-2202
JPOPKEN@GMAIL.COM
HERD PREFIX: JP

R P FARMS

ROBERT POPKEN
33360 220TH STREET
SWANVILLE, MN 56382
320-547-2202
HERD PREFIX: RP

SADLER CATTLE COMPANY

GAIL JOHNSON & JIM SADLER
21140 SAINT FRANCIS BLVD
ANOKA, MN 55303
612-581-8706
GAIL_JOHNSON@YAHOO.COM
HERD PREFIX: SCC

THOMPSON LAND & CATTLE COMPANY

JACE & VEARL THOMPSON
6629 100 STREET SW
MOTLEY, MN 56466
801-391-8989
THEBRICK25@GMAIL.COM
HERD PREFIX: TLC

TWO STEP SYNDICATE

33424 183RD STREET
PIERZ, MN 56364
320-249-2130

WHISPERING SPRUCE FARM

TRAVIS & CONNIE SCHLOSSER
16312 CR #3 NE
MILTONA, MN 56364
218-943-4318
TRAVISCONNIE@MIDWESTINFO.NET
HERD PREFIX: WS

WHITE FARMS

EMILEE WHITE
40649 CO HWY 19
WADENA, MN 56482
218-639-6941
WEMILEE15@GMAIL.COM
HERD PREFIX: WF

Missouri

ALUMBAUGH FARMS

DALE V AND TERESA M ALUMBAUGH
193 SW 52ND AVE
TRENTON, MO 64683
660-654-0496
ALUMBAUGHFARMS@GMAIL.COM
HERD PREFIX: DA
HALL OF FAME

CLEMONS CATTLE COMPANY

JOHN CLEMONS
23290 E 2000 ROAD
FAIR PLAY, MO 65649
417-399-4959
HERD PREFIX: CCC

BILLIE G CULP

20532 QUAIL ROAD
NEOSHO, MO 64850
417-628-3847
BGCULP@LERU.NET
HERD PREFIX: BGC

DIAMOND S DEVONS

PATRICK & MYRA SWYERS
33 COUNTRY ROAD 4055
SALEM, MO 65560
573-739-1161
SWYERSM@HOTMAIL.COM
HERD PREFIX: DSD

TRIPLE CROWN SOUTH DEVON FARM

RANDALL J CAMPBELL
4114 STATE RT U
RUSSELLVILLE, MO 65074
573-782-3418
RSCAMPBELL1984@GMAIL.COM
HERD PREFIX: TC

Montana

BIG COUNTRY BEEF GENETICS

LEO MCDONNELL & JIM BROWN
BOX 259
LODGE GRASS, MT 59050
406-639-2569
AMSALERS@AOL.COM
HERD PREFIX: BC

LEO MCDONNELL JR

W-2 RANCH
13 BULL DRIVE
COLUMBUS, MT 59019
406-433-5597
HERD PREFIX: LM

MJB RANCH

JIM & MARY BROWN
BOX 259
LODGE GRASS, MT 59050
406-639-2569
AMSALERS@AOL.COM
HERD PREFIX: MJB
LIFETIME ACHIEVEMENT

MIDLAND BULL TEST

5 BULL DRIVE
COLUMBUS, MT 59019
406-322-5597
BULLS@MIDLANDBULLTEST.COM
HALL OF FAME

C/N RANCH

150 HOWIE ROAD
BIG TIMBER, MT 59011
406-690-8731
CNELSON@MIDDRIVERS.COM
HERD PREFIX: CCN

Nebraska

LEAH GIESS

4721 N 133RD PLAZA #1223
OMAHA, NE 68164
HERD PREFIX: DLCC

WILSON RANCH

BLAINE G WILSON
2676 213TH TRAIL
LAKESIDE, NE 69351
308-762-6026
BWLSRANCH@GMAIL.COM
HERD PREFIX: BW
HALL OF FAME

New York

HOXIE HILL FARMS

MIKE VANDENBERG
55 WARD ROAD
HAMMOND, NY 13646
315-744-4273
HERD PREFIX: HHF

North Carolina

BAR/E CATTLE COMPANY

D STEPHEN ELMORE
1235 W MT GILEAD CH ROAD
CLINTON, NC 28328
910-385-6200
SANDBELMORE@CENTURYLINK.NET
HERD PREFIX: DSE

North Dakota

DAHL LAND & CATTLE CO

JEFF DAHL
6442 55TH AVE SE
GACKLE, ND 58442
701-485-3206
JLDAHL@DAKTEL.COM
HERD PREFIX: DLC
HALL OF FAME

DIAMOND PLUS CATTLE

ROGER & DAVID PRESLER
6161 56TH AVE SE
GACKLE, ND 58442
701-485-3505
DAKOTADPC@DAKTEL.COM
HERD PREFIX: DPC

JALLO STOCK FARM

WAYNE & NATHAN JALLO
12253 55TH ST NE
FORDVILLE, ND 58231
701-384-6153
WJALLO@POLARCOMM.COM
HERD PREFIX: JSF

2025 MEMBERSHIP DIRECTORY

JOHN KUCHERA
15350 COUNTY ROAD 10
WYNDMERE, ND 58081
701-439-2152
JKUCHERA@RRT.NET
HERD PREFIX: KL

Oregon

GNECH FARMS
20990 MORELOCK ROAD
MALIN, OR 97632
541-371-0085
JACKIGNECH@YAHOO.COM
HERD PREFIX: GJG

Pennsylvania

BRETT SHELTON
6803 JACK ROAD
ST. THOMAS, PA 17252
717-262-5665
BRETT12457@GMAIL.COM

South Dakota

GOLDHORN FARM
DONALD GOLDHORN
45454 183RD STREET
CASTLEWOOD, SD 57223
605-237-6277
DGOLDHORN@YAHOO.COM
HERD PREFIX: GF

Texas

MIKE & CONNIE MALLETT
10602 N HWY 281
LAMPASAS, TX 76550
512-556-1021
MMCMALLETT@OUTLOOK.COM
HERD PREFIX: MOM

JARED MUMM
1717 DIVISION STREET
COMMERCE, TX 75428
JARED.MUMM@YAHOO.COM
HERD PREFIX: SIG

Vermont

CIOFFI CATTLE COMPANY
KYLE CIOFFI
31 CLYDE ALLEN DRIVE
ST. ALBANS, VT 05478
802-935-5781
KLCIOFFI@YAHOO.COM
HERD PREFIX: CCK

Washington

X-E STOCK RANCH
LEE & CONNIE ENGELHARDT
8354 RD 16 NE
MOSES LAKE, WA 98837
509-766-0161
XESOUTHDEVON@ADESSAOFFICE.COM
HERD PREFIX: XE

Wisconsin

LANCE A BRANTNER
N4524 710TH ST
ELLSWORTH, WI 54011
651-214-9918
HERD PREFIX: LAB

ROBERT EICHER
34645 PUMPHOUSE ROAD
BAYFIELD, WI 54814
715-265-4075

ABE & RENEE FICK
W2331 70TH AVE
MAIDEN ROCK, WI 54750
715-495-1956
AFCATTLE1@YAHOO.COM
HERD PREFIX: FC

HIDDEN PARADISE RANCH
DEVIN HADORN-PAPKE
S8020 HILLVIEW ROAD
EAU CLAIRE, WI 54701
715-878-4088
HPCATTLE.COM
DEVIN@JOHNSONLITHO.COM

KNN FARMS
KURT & NETTIE NELSON
W5137 290TH AVENUE
BAY CITY, WI 54723
715-594-3805
KNNFARMSWI@GMAIL.COM
HERD PREFIX: KNN

VALLEY HILL FARM
TODD LEONARD
N4524 710 STREET
ELLSWORTH, WI 54011
715-273-4520
TDLEONARD@LIVE.COM
HERD PREFIX: VHF

ZIMMER LAND & LIVESTOCK
CODY ZIMMER
N2701 COUNTY ROAD D
BAY CITY, WI 54723
715-590-2124
HERD PREFIX: ZLL

Wyoming

NORTH AMER SOUTH DEVON ASSOC
PO BOX 850
BIG HORN, WY 82833
303-770-3130
INFO@SOUTHDEVON.COM
WWW.SOUTHDEVON.COM

WYOMING SOUTH DEVONS
PO BOX 72
MANVILLE, WY 82227
HALL OF FAME

International

DIAMOND M SOUTH DEVON
ELSIE BEDDOES
BOX 389
DUCHESS AB CANADA T0J 020
403-566-2467
DMRRANCHING@GMAIL.COM
HERD PREFIX: DMS

HLUSEK FARMS, INC.
ADAM & HEIDI HLUSEK
1089 CHIMNEY VALLEY ROAD
WILLIAMS LAKE, BC CANADA V2G 4W5
604-853-1958
HLUSEKFARMS@GMAIL.COM
HERD PREFIX: HLU

SAMPSON MCGREGOR STOCK FARM
RALPH MCGREGOR & B G SAMPSON
BOX 6769
BONNYVILLE, AB CANADA T9N 2H2
780-826-7077
SMS@XPLOARNET.COM
HERD PREFIX: SMS

MISSOURI COTEAU CATTLE COMPANY
GARY JONES
BOX 38
CRANE VALLEY, SK, CANADA, SOH IBO
306-631-6274
JONESRANCH@LIVE.CA
HALL OF FAME

2024 HALLMARK DAMS

The North American South Devon Association in continuing efforts to stress performance and productivity, recognizes the superior females of the breed, the Hallmark Dams. To identify these cows, emphasis was placed on early puberty, breeding, early calving and superior production over time. A Hallmark Dam is the standard by which all South Devon cows can be judged.

Hallmark Dams Criteria

1. Dams must have weaned a calf born since January 1, 2024.
2. Dams must be at least 50 percent South Devon and have had a minimum of three calves.
3. The maximum age for a dam to have had her first calf is 30 months of age.
4. A maximum calving interval of 395 days.
5. Every calf produced must have weaning records submitted.
6. A progeny average 205-day adjusted weaning weight ratio of at least 105.

The following list recognizes 36 South Devon cows bred and owned by 8 South Devon breeders. The first table lists each individual Hallmark Dam and her current owner. The table on the next page shows the 30 sires of these distinguished dams, while the last table lists all breeders of these Hallmark Dams. Once a dam reaches this status she will continue to be recorded in the database as a Hallmark Dam.

Owner Dam's Name	No. Calves	Avg. 205-Ratio	Calving Interval	Owner Dam's Name	No. Calves	Avg. 205-Ratio	Calving Interval
DAHL LAND & CATTLE CO, GACKLE, ND				CARROLL & CAROLE NELSON, BIG TIMBER, MT			
DLC MS BLACKFOOT 038 (Fullblood)	3	107.3	372	CCN MONTANA GENESIS G8 (1/2 Blood)	4	106.3	364
DLC MISS RYDER 950G (Fullblood)	4	107	367	NICHOLS FARMS LTD, BRIDGEWATER, IA			
DLC MS SHILO 956G (Fullblood)	4	108.3	371	NICHOLS HEIRESS DSH027 (3/4 Blood)	3	111.3	389
DLC MR ROMEO 436(Purebred)	9	107.4	362	NFL BLACKBIRD DSC003 (1/2 Blood)	8	108.3	367
DLCC RANCH, PIERZ, MN				JOEL POPKEN, SWANVILLE, MN			
DLCC COCOA 114H (1/2 Blood)	3	109.7	386	JP FOXTROT 82F (Fullblood)	5	105.4	368
DLCC DORY 37H (1/2 Blood)	3	114	370	R P FARMS, SWANVILLE, MN			
DLCC GIDGET 49G (1/2 Blood)	4	105.3	372	RP HABITAT 03H (Fullblood)	3	107.3	371
DLCC GINGER 7G (1/2 Blood)	4	109.3	366	RP HEAVEN 15H (3/4 Blood)	3	107.7	377
DLCC GOLDBLOCKS 34G (1/2 Blood)	4	110.8	365	RP FLINT 02F (3/4 Blood)	5	112.4	373
DLCC GWEN 31G (Fullblood)	4	108	360	TRIPLE CROWN SOUTH DEVON FARM, RUSSELLVILLE, MO			
DLCC GEMMA 36F (1/2 Blood)	5	117	369	TC HAIL MARY 31H (Fullblood)	3	107.7	352
DLCC BELINDAAN 69E (Fullblood)	6	105.5	378	TC HALLMARK 23H (Fullblood)	3	109.3	366
DLCC BELMONT 49E (Purebred)	6	109.3	365	TC HOLY COW 12H (Fullblood)	3	116	373
DLCC COCOA 65E (Fullblood)	6	107.7	350	TC GAZE 910G (Fullblood)	4	106.3	362
DLCC EVITA 20E (Fullblood)	6	111.3	370	TC GOOD LOOKIN' 916G (Fullblood)	4	107.8	369
DLCC DORY 100D (1/2 Blood)	7	109.3	362	TC DARLIN' 634D (Fullblood)	7	108.1	376
DLCC LOOP 72D (Fullblood)	7	107.7	376	TC DREAMY 661D (Fullblood)	7	107.4	373
DLCC ROSE 69D (Fullblood)	7	113.7	369	TC BARBIE 430B (Fullblood)	9	128.1	368
DLCC SYDNEY 73D (Fullblood)	7	107.1	365	CIMARRON CLIMAX 302A (Fullblood)	10	105.6	366
				TC ZONE (Fullblood)	11	107.1	366

2024 HALLMARK BREEDERS

DAHL LAND & CATTLE CO, GACKLE, ND.....	4	NICHOLS FARMS LTD, BRIDGEWATER, IA	2
DLCC RANCH, PIERZ, MN	15	JOEL POPKEN, SWANVILLE, MN	1
CARROLL & CAROLE NELSON, BIG TIMBER, MT	1	R P FARMS, SWANVILLE, MN	3
		TRIPLE CROWN SOUTH DEVON FARM, RUSSELLVILLE, MO	9

2024 HALLMARK SIRES

Sire's Name	Reg. Number	Percentage	No. Dams	Sire's Name	Reg. Number	Percentage	No. Dams
CIMARRON SUPERIOR 442	125263	(Fullblood)	3	DLCC EVEREST 50E	213082	(3/4 Blood)	1
DLCC DEBUT 88D	210912	(Fullblood)	3	DLCC MANHATTAN 33Z	201588	(Purebred)	1
DLCC BELMONT 25B	206413	(Fullblood)	2	DLCC TWO STEP 84B	205508	(Purebred)	1
TC XPLOSION	198811	(Fullblood)	2	DLCC WHIPLASH 1Y	199722	(Purebred)	1
9 MILE FRANCHISE 6305	213626	(3/4 Blood)	1	GUM HILL RED 530	208776	(Fullblood)	1
BUBS SOUTHERN CHARM AA31	217238	(3/4 Blood)	1	LCOC TRINITY JO64B	210338	(3/4 Blood)	1
CIMARRON AVENGER 135Y	203209	(Fullblood)	1	LEACHMAN ACCELERATE X166D	213673	(3/4 Blood)	1
CIMARRON BOLD OKIE 20X	200992	(Fullblood)	1	MD EFFORTLESS 2E	216095	(Fullblood)	1
CIMARRON FOREMOST 320A	204509	(Fullblood)	1	MJB ROMEO 337Z	201824	(Purebred)	1
DLC MR BLACKFOOT 779	212837	(Purebred)	1	MMM UNTOUCHABLE W810	199405	(Purebred)	1
DLC MR SHILO 164	210079	(Fullblood)	1	NFL BLACK JACK DSD051	210781	(Fullblood)	1
DLC RIDER 5100	208061	(Purebred)	1	SCC MELBOURNE ID	209763	(Fullblood)	1
DLCC CHECKERS 12C	208860	(Fullblood)	1	TC BUCKAROO 412B	206540	(Fullblood)	1
DLCC COPY CAT 69C	208807	(Fullblood)	1	TC DIRECTION 652D	210664	(Fullblood)	1
DLCC DODGE CITY 78Y	200720	(Purebred)	1	X-E MR OZ D713	210703	(Fullblood)	1

PERCENTILE CHARTS

2025 North American South Devon Association Main Sire Percentile Chart

Percentile	CED	BW	WW	YW	MWW	MILK	CEM	REA	MARB	FAT	CWT	DOC	STAY
Average	9.9	0.7	58	86	42	14	3.2	0.24	-0.1	-0.1	-13.6	12	15
5%	16.5	-2.9	82	128	62	25	7.6	0.58	0.2	-0.06	13.8	19	20
10%	14.8	-2	73	117	55	21	6.9	0.53	0.1	-0.07	9.5	16	19
15%	13	-1.3	72	110	51	18	5.9	0.49	0	-0.08	2.9	15	18
20%	12.3	-0.7	68	104	49	18	5.4	0.46	0	-0.08	-0.8	14	17
25%	11.6	-0.5	68	101	49	17	4.8	0.39	-0.1	-0.08	-4.7	14	17
30%	11.2	0	63	98	47	17	4.6	0.35	-0.1	-0.08	-9.7	14	17
35%	10.9	0.1	62	93	45	16	4.3	0.31	-0.1	-0.09	-12.2	13	17
40%	10.5	0.3	61	91	44	16	4	0.3	-0.1	-0.09	-13.4	13	16
45%	10	0.5	59	89	43	15	3.9	0.26	-0.2	-0.09	-14	13	16
50%	9.4	1	58	84	42	15	3.4	0.23	-0.2	-0.1	-15.1	12	15
55%	9.1	1.3	56	79	40	14	2.9	0.21	-0.2	-0.1	-17.3	12	15
60%	8.5	1.5	54	78	39	14	2.6	0.19	-0.2	-0.1	-18.4	12	15
65%	8.4	1.7	51	75	38	13	2.5	0.15	-0.2	-0.11	-21.5	11	14
70%	8	2.1	49	71	37	12	2.1	0.13	-0.3	-0.11	-22.1	11	14
75%	7.9	2.2	47	68	36	10	2	0.1	-0.3	-0.11	-24.9	11	14
80%	7.1	2.3	46	65	34	10	1.1	0.02	-0.3	-0.12	-25.6	10	13
85%	6.5	2.9	44	62	33	7	0.2	-0.07	-0.3	-0.12	-29.2	8	13
90%	5.7	3.1	42	60	32	4	-1	-0.12	-0.4	-0.12	-32.6	7	12
95%	5.3	4	39	56	22	-3	-2.9	-0.26	-0.4	-0.13	-38.6	5	10

PERCENTILE CHARTS

2025 North American South Devon Association Dams Percentile Chart

Percentile	CED	BW	WW	YW	MWW	MILK	CEM	REA	MARB	FAT	CWT	DOC	STAY
Average	9.4	1.6	41	56	37	17	3.2	0.29	-0.1	-0.09	-11.6	9	11
5%	13.9	-1.8	64	96	52	25	7.7	0.5	0.4	-0.01	16.8	14	19
10%	13	-1	59	88	49	23	6.9	0.45	0.2	-0.04	11.8	13	17
15%	12.4	-0.5	56	82	46	22	6.4	0.41	0.1	-0.05	7.2	12	16
20%	12	-0.1	54	77	44	21	6.1	0.39	0	-0.06	0.9	11	15
25%	11.6	0.3	51	73	43	21	5.6	0.36	0	-0.08	-3.5	11	15
30%	11.2	0.6	49	69	42	20	5.1	0.35	-0.1	-0.08	-6.6	10	14
35%	10.8	0.9	47	65	40	19	4.6	0.33	-0.1	-0.09	-9.3	10	13
40%	10.4	1.1	45	61	39	19	4.2	0.32	-0.1	-0.09	-11.8	10	12
45%	10	1.3	43	58	38	18	3.7	0.31	-0.2	-0.1	-14.1	9	12
50%	9.6	1.5	41	55	37	18	3.3	0.3	-0.2	-0.1	-16	9	11
55%	9.2	1.8	39	52	36	17	2.9	0.28	-0.2	-0.1	-17.8	9	10
60%	8.8	2	37	48	35	16	2.5	0.27	-0.2	-0.11	-19.5	8	10
65%	8.3	2.3	35	45	34	15	2.1	0.26	-0.2	-0.11	-20.8	8	9
70%	7.9	2.6	33	42	33	14	1.7	0.24	-0.2	-0.11	-22.1	8	8
75%	7.4	2.9	31	39	32	13	1.2	0.22	-0.2	-0.12	-23.3	7	7
80%	6.9	3.3	29	36	30	12	0.6	0.2	-0.3	-0.12	-24.4	7	6
85%	6.2	3.7	27	32	28	11	0	0.17	-0.3	-0.12	-25.5	6	4
90%	5.4	4.3	24	28	26	9	-0.9	0.12	-0.3	-0.12	-26.8	6	4
95%	4	5.2	20	21	23	7	-2.3	0.04	-0.3	-0.12	-28.4	6	4

2025 North American South Devon Association Non-Parent Percentile Chart

Percentile	CED	BW	WW	YW	MWW	MILK	CEM	REA	MARB	FAT	CWT	DOC	STAY
Average	10.3	0.5	61	91	47	17	3.5	0.26	0	-0.08	-4	12	15
5%	14.5	-2.2	80	123	59	24	6.8	0.54	0.4	-0.03	25.3	16	19
10%	13.4	-1.5	75	114	56	23	6.2	0.48	0.3	-0.04	18.1	15	19
15%	12.7	-1	72	109	55	22	5.8	0.44	0.3	-0.05	14.6	15	18
20%	12.2	-0.7	70	105	54	21	5.3	0.41	0.2	-0.06	10.7	14	18
25%	11.8	-0.5	68	103	52	20	4.9	0.38	0.2	-0.06	6.7	14	18
30%	11.5	-0.3	67	100	51	19	4.6	0.36	0.1	-0.07	3.2	14	17
35%	11.2	-0.1	65	97	50	19	4.4	0.34	0.1	-0.07	0.4	13	17
40%	10.8	0.1	63	95	49	18	4.1	0.32	0	-0.08	-1.8	13	16
45%	10.6	0.3	62	92	48	18	3.8	0.3	0	-0.08	-4	13	16
50%	10.3	0.5	60	90	47	17	3.5	0.28	-0.1	-0.08	-6	13	16
55%	9.9	0.7	59	88	46	16	3.2	0.26	-0.1	-0.09	-8	12	16
60%	9.6	0.9	57	86	46	16	3	0.23	-0.1	-0.09	-9.8	12	15
65%	9.3	1.1	56	84	45	15	2.7	0.21	-0.1	-0.09	-11.7	12	15
70%	9	1.4	55	81	44	15	2.5	0.18	-0.1	-0.09	-13.8	11	14
75%	8.6	1.6	53	79	42	14	2.2	0.14	-0.2	-0.1	-15.8	11	14
80%	8.3	1.9	52	76	41	13	1.9	0.1	-0.2	-0.1	-18	11	13
85%	7.9	2.2	50	73	40	13	1.6	0.05	-0.2	-0.1	-20.7	10	12
90%	7.3	2.7	48	70	38	12	1.1	-0.01	-0.2	-0.1	-23.6	9	11
95%	6.4	3.2	44	63	35	10	0.3	-0.08	-0.3	-0.11	-27.6	8	10

2025 SIRE SUMMARY - MAIN LISTING

Name	Reg#	DOB	%	#Herds	CED	BW	WW	YW	Milk	MWW	CEM	Marb	CW	Fat	REA
				#Dcalves	Acc	Acc	Acc	Acc	Acc	Acc	Acc	Acc	Acc	Acc	Acc
Color	H/P/S			Sire				Dam							
Breeder															
BC GARTH IIG				2	7.6	2.3	73	125	13	49	1.0	-0.1	13.0	-0.09	0.41
216999	10/1/19	FB		0.45	0.49	0.45	0.45	0.14	0.21	0.35	0.37	0.30	0.35		
BLK	POLLED			MJB EXTRA 771E				BC AMELIA 6645D							
BIG COUNTRY BEEF GENETICS LODGE GRASS MT				BIG COUNTRY BEEF GENETICS LODGE GRASS MT											
BC PROGRESS 315U				17	6.0	1.3	73	130	21	57	4.3	-0.1	-5.7	-0.12	0.34
194458	1/28/08	FB		270	0.67	0.85	0.81	0.80	0.59	0.69	0.71	0.64	0.69		
BLK	POLLED			MJB ROMEO 125R				BC SASSY 6714S							
BIG COUNTRY BEEF GENETICS LODGE GRASS MT				TRIPLE M INCORPORATED CLINTON NC; BIG COUNTRY BEEF GENETICS LODGE GRASS MT											
BGC P2E				1	10.4	2.0	63	86	16	48	2.9	0.1	-16.5	-0.11	0.31
212550	2/27/17	PB		0.45	0.53	0.49	0.47	0.15	0.18	0.28	0.38	0.25	0.33		
RED	POLLED			TLC DEETZ 9012				BGC SIB							
BILLIE G CULP NEOSHO MO				BILLIE G CULP NEOSHO MO											
BGC P70E				1	7.9	0.1	43	60	21	43	4.6	-0.1	-13.8	-0.08	0.30
213476	10/5/17	PB		0.45	0.49	0.45	0.46	0.19	0.21	0.30	0.37	0.27	0.34		
BLK	POLLED			KNN RANGER 37T				BGC S33B							
BILLIE G CULP NEOSHO MO				BILLIE G CULP NEOSHO MO											
CIMARRON AVENGER 135Y				5	5.3	2.9	63	96	10	42	-4.2	-0.3	-13.1	-0.10	0.15
203209	3/9/11	FB		62	0.37	0.77	0.72	0.72	0.37	0.25	0.40	0.20	0.38		
RED	POLLED			CIMARRON CARUSO 923W				CIMARRON SAVANAH 538R							
BOLLENBACH CATTLE COMPANY KINGFISHER OK				MJB RANCH LODGE GRASS MT											
CIMARRON REBEL 738T				1	13.0	0.4	58	90	4	33	6.9	-0.4	-15.0	-0.12	0.35
192356	2/22/07	PB		142	0.29	0.60	0.52	0.55	0.24	0.20	0.35	0.18	0.31		
RED	POLLED			MJB ROUNDUP 208R				CIMARRON BELLE 362N							
BOLLENBACH CATTLE COMPANY KINGFISHER OK				BRIKEN FARMS LLC JEFFERSON CITY MO											
CIMARRON REBEL 941W				4	7.1	2.2	63	94	17	49	8.5	-0.3	-14.0	-0.12	0.13
198091	2/17/09	PB		113	0.44	0.67	0.61	0.61	0.41	0.29	0.41	0.24	0.38		
BLK	POLLED			MJB ROUNDUP 208R				CIMARRON PLAYMATE 136L							
BOLLENBACH CATTLE COMPANY KINGFISHER OK				MJB RANCH LODGE GRASS MT; NICHOLS FARMS LTD BRIDGEWATER IA											
CIMARRON SUPERIOR 442				29	8.5	1.5	56	93	15	43	1.7	0.1	-25.7	-0.06	-0.12
125263	3/27/94	FB		1030	0.81	0.88	0.84	0.85	0.69	0.68	0.71	0.60	0.68		
RED	POLLED			CIMARRON RULER 815				CIMARRON SUNSET 935							
BOLLENBACH CATTLE COMPANY KINGFISHER OK				WAYNE DOHE LINCOLN KS											
CIRCLE S 61X				7	15.4	-4.1	5	0	20	22	4.0	-0.3	-24.9	-0.13	0.20
110060	3/8/88	FB		115	0.33	0.73	0.66	0.67	0.36	0.17	0.20	0.10	0.23		
RED	POLLED			LEACHMAN DEVON 828T				LEACHMAN JH S873							
CIRCLE S RANCH COMPANY THREE FORKS MT				WILLIAM L MCCLEEREY MANVILLE WY											
COTEAU BEAVR SUNRISE 510				1	12.3	1.3	46	72	4	27	4.0	-0.2	-1.5	-0.13	0.41
203370	2/24/12	PB		48	0.52	0.66	0.63	0.64	0.31	0.31	0.45	0.25	0.39		
RED	POLLED			HHSD BEAVER 1ST				COTEAU SUNRISE 85							
DIAMOND PLUS CATTLE GACKLE ND				DIAMOND PLUS CATTLE GACKLE ND											
DLC BLACKFOOT 232G				1	13.0	-1.0	47	80	25	49	7.6	-0.1	-10.4	-0.10	0.18
216451	4/8/19	FB		2	0.23	0.51	0.49	0.50	0.20	0.05	0.26	0.04	0.19		
BLK	POLLED			DLC BLACK FOOT 307				DLC MS ROMEO 745							
DAHL LAND & CATTLE CO GACKLE ND				DAHL LAND & CATTLE CO GACKLE ND											
DLC BLACKFOOT LAD 226				1	11.2	1.5	62	91	18	49	5.4	-0.1	-7.8	-0.09	0.35
214210	4/20/18	FB		18	0.28	0.53	0.51	0.52	0.24	0.12	0.29	0.10	0.24		
BLK	POLLED			MJB BLACKFOOT 546C				DLC MS HUDSON 406							
DAHL LAND & CATTLE CO GACKLE ND				DAHL LAND & CATTLE CO GACKLE ND											
DLC MR BLACKFOOT 300				2	11.6	0.9	50	79	18	43	5.8	0.1	-0.8	-0.08	0.20
212830	4/1/17	PB		6	0.56	0.71	0.66	0.64	0.28	0.42	0.49	0.34	0.43		
BLK	POLLED			MJB BLACKFOOT 546C				DLC LEGEND LASS 423							
DAHL LAND & CATTLE CO GACKLE ND				MJB RANCH LODGE GRASS MT											
DLCC BLACK ENUF 127J				54	5.7	-0.3	39	60	16	36	-3.6	-0.3	-32.6	-0.08	0.14
169690	5/15/99	PB		515	0.71	0.81	0.74	0.75	0.52	0.45	0.55	0.38	0.52		
BLK	POLLED			MAPLE LEAF EBONY IIF				DLCC TILLY 67E							
DLCC RANCH PIERZ MN				JOEL POPKEN SWANVILLE MN; DLCC RANCH PIERZ MN; TRIPLE M INCORPORATED CLINTON NC;											

2025 SIRE SUMMARY - MAIN LISTING

Name			#Herds	CED	BW	WW	YW	Milk	MWW	CEM	Marb	CW	Fat	REA
Reg#	DOB	%	#Dcalves	Acc	Acc	Acc	Acc	Acc	Acc	Acc	Acc	Acc	Acc	Acc
Color	H/P/S		Sire				Dam							
Breeder	Owner(s)													
DLCC CADET 4C			1	9.1	2.5	58	78	12	40	4.3	0	-25.0	-0.08	0.10
208409	2/22/15	PB	16	0.29	0.57	0.54	0.56	0.30		0.24	0.17	0.33	0.15	0.28
RED	POLLED		DLCC ADMIRAL 12A				DLCC MAMMY 46A							
LEAH GIESS PIERZ MN	DIAMOND PLUS CATTLE GACKLE ND													
DLCC COPY CAT 69C			7	9.4	0.3	57	90	8	37	2.5	0.1	-13.2	-0.09	-0.05
208807	4/9/15	FB	49	0.43	0.65	0.59	0.62	0.37		0.31	0.31	0.42	0.25	0.36
BLK	POLLED		DLCC DODGE CITY 78Y				DLCC TOPAZ 20Y							
DLCC RANCH PIERZ MN	LEACHMAN CATTLE OF CO FT COLLINS CO; DLCC RANCH PIERZ MN													
DLCC COWBOY JO 81C			13	14.8	-1.9	53	79	7	34	4.0	-0.1	-12.2	-0.05	-0.05
208816	4/21/15	FB	37	0.58	0.69	0.64	0.66	0.38		0.33	0.45	0.52	0.35	0.44
RED	POLLED		DLCC DODGE CITY 78Y				DLCC KATARINA 67Z							
DLCC RANCH PIERZ MN	DLCC RANCH PIERZ MN; LEACHMAN CATTLE OF CO FT COLLINS CO													
DLCC CROSSFIRE 67C			1	8.0	2.2	74	110	17	54	2.9	0.1	14.7	-0.09	0.15
208406	4/9/15	FB	31	0.32	0.59	0.54	0.58	0.36		0.28	0.17	0.35	0.14	0.28
RED	POLLED		DLCC DODGE CITY 78Y				DLCC CLAIRE 50W							
LANE GIESS PIERZ MN	DAHL LAND & CATTLE CO GACKLE ND; DLCC RANCH PIERZ MN													
DLCC DEBUT 88D			3	11.8	-0.5	73	101	-4	32	2.6	0.5	2.9	-0.09	-0.11
210912	4/12/16	FB	48	0.57	0.75	0.69	0.72	0.44		0.38	0.48	0.54	0.39	0.49
BLK	POLLED		DLCC DODGE CITY 78Y				DLCC BINDI 71X							
DLCC RANCH PIERZ MN	DLCC RANCH PIERZ MN													
DLCC DERBY 64D			8	6.5	2.6	53	54	-5	22	2.1	0.1	-38.6	-0.09	-0.07
210507	4/2/16	FB	50	0.55	0.76	0.68	0.69	0.46		0.40	0.40	0.51	0.33	0.46
RED	POLLED		DLCC DODGE CITY 78Y				DLCC TOPAZ 20Y							
DLCC RANCH PIERZ MN	DLCC RANCH PIERZ MN; DON & LINDA HARVEY ARBELA MO													
DLCC DODGE CITY 78Y			13	10.9	0.3	66	98	1	34	3.6	0.2	2.3	-0.06	-0.03
200720	4/22/11	PB	131	0.55	0.77	0.72	0.74	0.54		0.45	0.47	0.53	0.38	0.50
BLK	POLLED		SBCC WOMANIZER 9137				DLCC PERFECT ENUF 28W							
LANE GIESS PIERZ MN	LEACHMAN CATTLE OF CO FT COLLINS CO; DLCC RANCH PIERZ MN													
DLCC FATE 56F			4	9.5	0.6	66	101	6	39	2.0	0.1	-13.7	-0.08	-0.30
214816	3/25/18	PB	9	0.53	0.61	0.56	0.57	0.30		0.32	0.42	0.47	0.38	0.43
RED	POLLED		DLCC DODGE CITY 78Y				DLCC FANCY PANTS 103Y							
DLCC RANCH PIERZ MN	NINE MILE RANCH WALLA WALLA WA; DLCC RANCH PIERZ MN; SCOTCHLANDS FARM ARMSTRONG BC													
DLCC GOLD DUST 64G			13	8.0	2.2	90	135	10	55	2.6	0.7	22.8	-0.07	0.46
216262	3/29/19	FB	8	0.56	0.76	0.70	0.70	0.30		0.29	0.53	0.57	0.45	0.52
BLK	POLLED		DLCC DEBUT 88D				DLCC LOOP 19B							
DLCC RANCH PIERZ MN	DLCC RANCH PIERZ MN													
DLCC GOLD MEDAL 104G			2	9.2	0.4	70	106	15	50	2.1	0	3.0	-0.08	-0.33
216296	4/16/19		17	0.55	0.61	0.58	0.57	0.33		0.30	0.40	0.50	0.35	0.44
BLK	POLLED		DLCC EVEREST 50E				DLCC CLAIRE 12B							
DLCC RANCH PIERZ MN	DLCC RANCH PIERZ MN; R P FARMS SWANVILLE MN													
DLCC GRANDEUR 42G			5	14.6	-1.4	65	101	12	45	4.1	-0.1	-5.6	-0.06	-0.12
216237	3/25/19	FB	6	0.52	0.61	0.56	0.58	0.22		0.25	0.41	0.44	0.34	0.40
RED	POLLED		DLCC COWBOY JO 81C				DLCC PERFECT 9A							
DLCC RANCH PIERZ MN	CARROLL & CAROLE NELSON BIG TIMBER MT; DLCC RANCH PIERZ MN													
DLCC HOMESTEADER 140H			2	13.2	-2.1	49	72	7	32	2.3	-0.1	-21.9	-0.07	-0.12
217737	5/5/20	FB		0.47	0.53	0.50	0.51	0.24		0.27	0.38	0.44	0.34	0.39
BLK	POLLED		DLCC DEBUT 88D				DLCC BELINDA 14B							
DLCC RANCH PIERZ MN	9-R RANCH GOODLAND MN; DLCC RANCH PIERZ MN													
DLCC HOO DOO 26H			3	8.0	0	41	63	16	36	1.4	-0.2	-39.1	-0.08	-0.02
217633	3/16/20	FB	1	0.54	0.66	0.60	0.60	0.16		0.24	0.36	0.41	0.30	0.39
RED	POLLED		MD EFFORTLESS 2E				DLCC PUNCH 11F							
DLCC RANCH PIERZ MN	DLCC RANCH PIERZ MN													
DLCC PATRIOT 51Y			13	8.6	1.1	56	78	16	44	3.9	-0.2	-21.5	-0.10	0.34
200723	4/4/11	PB	55	0.37	0.62	0.59	0.59	0.39		0.32	0.27	0.41	0.20z	0.36
RED	POLLED		DLCC SHUR LOC 99W				DLCC GEMMA 104W							
LANE GIESS PIERZ MN	MJB RANCH LODGE GRASS MT													

2025 SIRE SUMMARY - MAIN LISTING

Name	Reg#	DOB	%	#Herds	CED	BW	WW	YW	Milk	MWW	CEM	Marb	CW	Fat	REA
				#Dcalves	Acc	Acc	Acc	Acc	Acc	Acc	Acc	Acc	Acc	Acc	Acc
	Color	H/P/S		Sire				Dam							
	Breeder							Owner(s)							
DLCC STOCKMAN 39C				7	8.4	1.0	83	123	7	48	5.2	-0.2	3.8	-0.09	0.39
207902	3/27/15	PB		22	0.42	0.62	0.58	0.60	0.35		0.29	0.33	0.42	0.27	0.38
BLK	POLLED			MMM UNTOUCHABLE W810				DLCC PROMISE 40U							
DLCC RANCH PIERZ MN				MISSOURI COTEAU CATTLE CO CRANE VALLEY SK CANADA; TERRY HOUSER LEONARDVILLE KS; DLCC RANCH PIERZ MN; JARED MUMM COMMERCE TX											
DLCC SURE THING 34P				9	8.5	0.3	60	92	17	47	-1.0	0.2	-13.4	-0.07	-0.14
181632	4/1/04			122	0.52	0.71	0.65	0.66	0.57		0.46	0.45	0.52	0.40	0.48
BLK	POLLED			DLCC SURE-ENUF				DLCC PERFECT ENUF 4M							
DLCC RANCH PIERZ MN				DLCC RANCH PIERZ MN											
DLCC SURE-ENUF				35	13.2	-1.9	42	68	15	36	3.6	-0.2	-42.3	-0.13	0.21
174528	5/6/02	FB		606	0.73	0.87	0.81	0.81	0.77		0.65	0.69	0.73	0.65	0.70
BLK	POLLED			DLCC BLACK ENUF 127J				DLCC MANDI 18K							
DLCC RANCH PIERZ MN				MJB RANCH LODGE GRASS MT; R P FARMS SWANVILLE MN; DLCC RANCH PIERZ MN;											
DLCC TWO STEP 84B				13	2.8	4.3	68	101	13	47	-6.0	-0.5	-22.0	-0.13	0.58
205508	5/12/14	PB		66	0.33	0.62	0.58	0.58	0.38		0.25	0.25	0.38	0.21	0.33
RED	POLLED			DLCC SHUR LOC 99W				DLCC DANCER 141T							
LANE GIESS PIERZ MN				DLCC RANCH PIERZ MN											
DLCC WHIPLASH 1Y				21	8.3	-0.5	52	80	12	38	-2.9	-0.3	-25.6	-0.08	-0.37
199722	1/1/11	PB		135	0.53	0.77	0.71	0.70	0.58		0.44	0.61	0.64	0.53	0.60
BLK	POLLED			DLCC SURE THING TOO 119T				DLCC DANCER 141T							
LANE GIESS PIERZ MN				DLCC WHIPLASH SYNDICATE PIERZ MN; DLCC RANCH PIERZ MN											
DPC BATTLECRY F833				1	9.1	-0.6	47	60	17	40	5.9	0	-32.6	-0.08	0.13
215424	3/6/18	FB			0.42	0.49	0.47	0.49	0.17		0.19	0.30	0.34	0.26	0.32
RED	POLLED			DLCC BATTLECRY 27B				DLC MS LEGACY 827U							
DIAMOND PLUS CATTLE GACKLE ND				DIAMOND PLUS CATTLE GACKLE ND											
DPC DALLAS PROGRESS D302				1	6.7	2.6	68	110	15	49	-1.5	-0.4	-9.7	-0.12	0.52
212318	2/28/16	FB		4	0.50	0.59	0.59	0.60	0.26		0.28	0.36	0.47	0.33	0.40
RED	POLLED			BC PROGRESS 315U				COTEAU DALLAS SKY A812							
DIAMOND PLUS CATTLE GACKLE ND				DIAMOND PLUS CATTLE GACKLE ND											
DPC DALLAS SKYLINE D812				1	8.9	1.7	49	68	10	34	-1.2	-0.5	-17.3	-0.10	0.46
212279	2/26/16	FB		2	0.48	0.58	0.58	0.58	0.23		0.23	0.30	0.40	0.26	0.39
RED	POLLED			LJB T. C. DALLAS				COTEAU SKYLINE U612							
DIAMOND PLUS CATTLE GACKLE ND				DIAMOND PLUS CATTLE GACKLE ND											
DPC MR ATOMIC F600				1	5.1	2.1	46	59	15	38	-1.2	-0.2	-43.1	-0.13	0.26
215477	2/13/18	FB		1	0.47	0.54	0.53	0.54	0.20		0.22	0.29	0.39	0.26	0.35
RED	POLLED			LEACHMAN ATOMIC 9360F				DPC SHUR DREAM D900							
DIAMOND PLUS CATTLE GACKLE ND				DIAMOND PLUS CATTLE GACKLE ND											
EBS ELKER 1121 642A				1	10.0	2.1	48	66	-3	21	2.9	-0.2	-34.6	-0.10	0.19
203524	3/3/13	FB		41	0.25	0.56	0.48	0.52	0.31		0.23	0.18	0.34	0.14	0.29
RED	POLLED			DLC LEGACY 1121				EBS IDA 507T							
ELKINGTON BROS & SONS IDAHO FALLS ID				ELKINGTON BROS & SONS IDAHO FALLS ID											
EBS ELKER MACHINE 419E				1	10.8	1.6	60	92	-9	22	3.6	-0.2	-21.5	-0.10	0.26
214269	3/7/17	FB		18	0.27	0.55	0.48	0.51	0.29		0.22	0.18	0.35	0.14	0.29
RED	POLLED			EBS ELKER 1121 642A				EBS MISS ELKER 1121 880B							
ELKINGTON BROS & SONS IDAHO FALLS ID				ELKINGTON BROS & SONS IDAHO FALLS ID											
FC RENEGADE 5G				5	12.5	0.5	48	64	8	32	3.3	-0.3	-32.8	-0.13	0.24
215376	4/19/19	FB		1	0.47	0.55	0.47	0.46	0.14		0.22	0.27	0.39	0.25	0.35
RED	POLLED			KNN RENO 20E				KNN 33B							
ABE AND RENEE FICK MAIDEN ROCK WI				VALLEY HILL FARM ELLSWORTH WI; DLCC RANCH PIERZ MN											
GUM HILL RED 530				9	10.5	3.0	54	76	10	37	6.2	-0.3	-12.3	-0.12	0.03
208776	3/17/09	FB		82	0.34	0.61	0.58	0.60	0.40		0.27	0.23	0.40	0.17	0.29
RED	POLLED			GUM HILL B41				GUM HILL Y046							
JVM EASTON 750E				20	11.1	0	61	90	16	46	0.4	-0.1	-15.1	-0.08	0.49
211759	4/28/17	FB		19	0.56	0.67	0.60	0.58	0.22		0.28	0.37	0.44	0.32	0.42
BLK	POLLED			HILL CREST 465B				JVM ZELLA 203Z							
JVM CATTLE COMPANY PELLA IA				JVM CATTLE COMPANY PELLA IA; DLCC RANCH PIERZ MN											

2025 SIRE SUMMARY - MAIN LISTING

Name			#Herds	CED	BW	WW	YW	Milk	MWW	CEM	Marb	CW	Fat	REA
Reg#	DOB	%	#Dcalves	Acc	Acc	Acc	Acc	Acc	Acc	Acc	Acc	Acc	Acc	Acc
Color	H/P/S		Sire	Owner(s)										
Breeder														
JVM JOHNNY CASH 150J			2	8.4	1.3	62	91	22	53	0.2	0.2	-26.4	-0.07	-0.26
218924	2/25/21			0.51	0.62	0.58	0.56	0.11		0.18	0.30	0.40	0.24	0.38
BLK	POLLED		JVM EASTON 750E	TLC BELLE 602D					DLCC RANCH PIERZ MN; JVM CATTLE COMPANY PELLA IA					
JVM CATTLE COMPANY PELLA IA														
JVM ZEKE 252Z			8	9.7	0	43	62	12	33	-0.2	-0.2	-17.6	-0.10	0.49
202601	5/4/12	PB	27	0.32	0.57	0.49	0.45	0.25		0.21	0.11	0.32	0.10	0.28
RED	POLLED		HS E PLURBIS UNUM	MAPLE LEAF IRIS 11IN					JVM CATTLE COMPANY PELLA IA					
JVM CATTLE COMPANY PELLA IA														
KNN ALL-IN 1H			3	12.5	-2.0	47	68	17	40	3.4	-0.1	-25.4	-0.11	0.17
217434	2/12/20	FB		0.51	0.60	0.53	0.54	0.14		0.22	0.34	0.39	0.28	0.36
BLK	POLLED		JVM EASTON 750E	KNN KEA 2F					KNN FARMS BAY CITY WI; DLCC RANCH PIERZ MN					
KNN FARMS BAY CITY WI														
KNN EDGEWATER 21J			2	11.2	0.4	55	76	14	41	2.1	-0.3	-2.0	-0.10	0.52
218959	4/2/21	PB		0.44	0.48	0.45	0.43	0.13		0.18	0.27	0.37	0.26	0.33
RED	POLLED		JVM EDGE 753E	KNN STAR DUST 24F					KNN FARMS BAY CITY WI					
KNN FARMS BAY CITY WI														
KNN FAIR-WARNING			2	8.7	0	45	62	12	35	2.2	-0.3	-28.1	-0.11	-0.07
217422	6/1/20	FB		0.47	0.51	0.49	0.47	0.16		0.21	0.28	0.38	0.26	0.37
RED	POLLED		KNN RENO 20E	KNN KEANA 52C					KNN FARMS BAY CITY WI					
KNN FARMS BAY CITY WI														
KNN FINAL DRAFT 2H			3	14.4	-2.9	45	67	18	41	4.6	-0.1	-22.4	-0.07	0.30
217435	2/14/20	FB		0.45	0.51	0.48	0.47	0.12		0.21	0.32	0.39	0.28	0.35
RED	POLLED		JVM EASTON 750E	KNN IKEA 3F					KNN FARMS BAY CITY WI					
KNN FARMS BAY CITY WI														
KNN FRANKS RED HOT 9K			2	10.2	-0.8	42	62	16	36	2.1	-0.2	-32.5	-0.10	0.29
219707	3/1/22	FB		0.43	0.49	0.45	0.43	0.10		0.18	0.29	0.36	0.26	0.34
RED	POLLED		KNN FINAL DRAFT 2H	KNN KATNESS 10H					R P FARMS SWANVILLE MN					
OAKLEY K YARWOOD BAY CITY WI														
KNN KENO 28S			8	11.3	3.0	46	70	21	43	4.7	-0.2	-18.4	-0.12	0.24
188557	5/15/06	PB	31	0.25	0.55	0.46	0.42	0.29		0.20	0.11	0.20	0.10	0.19
RED	POLLED		RSC GLACIER 108	DLCC KEYSHA 151N					KNN FARMS BAY CITY WI					
KNN FARMS BAY CITY WI														
KNN MARSHALL 8G			2	11.6	2.2	42	60	15	36	3.3	-0.4	-14.8	-0.12	0.39
215372	3/18/19	FB		0.45	0.52	0.47	0.46	0.19		0.23	0.34	0.40	0.30	0.37
RED	POLLED		KNN MIDWEST 20D	KNN KIZA 3Z					KNN FARMS BAY CITY WI					
KNN FARMS BAY CITY WI														
KNN RANGER 37T			9	11.2	-2.2	34	49	17	33	8.1	-0.1	-23.4	-0.10	0.04
193165	5/17/07	PB	129	0.42	0.68	0.62	0.60	0.47		0.33	0.13	0.37	0.09	0.32
BLK	POLLED		DLCC OPEN RANGE 3R	KNN RUBEE DANCER 25R					KNN FARMS BAY CITY WI					
KNN FARMS BAY CITY WI														
KNN RIDGE 27H			1	9.6	2.1	54	71	14	41	3.9	-0.3	-25.1	-0.12	0.23
217412	4/11/20	FB		0.43	0.49	0.45	0.44	0.17		0.20	0.28	0.36	0.25	0.33
RED	POLLED		KNN RENO 20E	KNN FLO 17A					KNN FARMS BAY CITY WI					
KNN FARMS BAY CITY WI														
KNN UNDENIED 4H			2	10.5	-0.1	59	89	15	45	4.5	-0.3	-0.9	-0.10	0.34
217428	3/1/20	FB	1	0.48	0.54	0.50	0.50	0.20		0.26	0.35	0.41	0.31	0.40
BLK	POLLED		MMM UNTOUCHABLE W810	KNN KEYZ 9E					KNN FARMS BAY CITY WI					
KNN FARMS BAY CITY WI														
LEACHMAN ATOMIC 9360F			6	5.9	2.0	41	59	14	34	-0.1	-0.3	-29.2	-0.12	0.30
132231	3/26/96	FB	94	0.44	0.69	0.64	0.63	0.46		0.33	0.18	0.36	0.14	0.31
RED	POLLED		LEACHMAN FULLCHARGE 907A	HLF RIDEAN 290R					MAR-BET FARM PELLA IA; LEACHMAN CATTLE CO BILLINGS MT					
LEACHMAN CATTLE CO BILLINGS MT														
LEACHMAN BLK MARBLE 913A			9	7.4	5.1	51	69	13	39	4.7	-0.3	-22.1	-0.11	0.23
116117	4/2/91	PB	66	0.34	0.68	0.63	0.64	0.46		0.34	0.19	0.28	0.16	0.24
BLK	POLLED		CHR 9S	MISS PICK 224P					LEACHMAN CATTLE CO BILLINGS MT					
LEACHMAN CATTLE CO BILLINGS MT														

2025 SIRE SUMMARY - MAIN LISTING

Name			#Herds	CED	BW	WW	YW	Milk	MWW	CEM	Marb	CW	Fat	REA
Reg#	DOB	%	#Dcalves	Acc	Acc	Acc	Acc	Acc	Acc	Acc	Acc	Acc	Acc	Acc
Color	H/P/S		Sire				Dam							
Breeder	Owner(s)													
LEACHMAN FULLCHARGE 907A			16	15.1	1.0	57	79	4	32	7.7	-0.3	-16.4	-0.12	0.50
116114	3/29/91	FB	595	0.54	0.85	0.80	0.81	0.73		0.58	0.40	0.53	0.34	0.49
RED	POLLED		LJB TURBO CHARGER				LEACHMAN JH S859							
LEACHMAN CATTLE CO BILLINGS MT			LEACHMAN CATTLE CO BILLINGS MT; MJB RANCH LODGE GRASS MT											
MD EFFORTLESS 2E			11	9.9	-1.0	49	75	13	38	1.4	-0.2	-24.7	-0.08	0.21
216095	3/27/17	FB	15	0.47	0.59	0.53	0.55	0.29		0.25	0.20	0.38	0.16	0.32
RED	POLLED		DLCC COWBOY JO 81C				KNN STRAWBERRY 38C							
MARVIN AND DENISE MUMM KIMBERLY ID			MARVIN AND DENISE MUMM KIMBERLY ID; DLCC RANCH PIERZ MN; LONN CAMPBELL MCINTOSH SD;											
MJB BLACK OUT 476B			2	7.9	-0.7	68	109	14	48	0.8	-0.1	13.8	-0.09	0.41
205655	3/19/14	FB	8	0.30	0.65	0.57	0.57	0.31		0.28	0.25	0.35	0.18	0.30
BLK	POLLED		MMM UNTOUCHABLE W810				MJB NIKKI 8613U							
MJB RANCH LODGE GRASS MT			MJB RANCH LODGE GRASS MT											
MJB DILLON 689D			7	9.2	2.6	73	115	26	62	5.0	-0.1	15.2	-0.10	0.53
209901	3/7/16	FB	13	0.53	0.65	0.58	0.57	0.28		0.30	0.39	0.45	0.32	0.43
BLK	POLLED		MJB SWAGGER 330Z				MJB YURI I666Y							
MJB RANCH LODGE GRASS MT			JVM CATTLE COMPANY PELLA IA; CIERA STEINLICHT VALLEY FALLS KS; MJB RANCH LODGE GRASS MT;											
MJB EXTRA 77IE			2	5.6	0.5	61	104	12	42	1.1	-0.2	-0.6	-0.12	0.57
212167	3/10/17	FB	13	0.38	0.69	0.63	0.62	0.31		0.31	0.33	0.41	0.27	0.36
BLK	POLLED		MJB COUNTRY COOL 535C				MJB NIKKI 8613U							
MJB RANCH LODGE GRASS MT			MJB RANCH LODGE GRASS MT											
MJB PROGRESS 892F			1	6.6	1.0	77	128	22	61	2.2	0	12.0	-0.08	0.15
213833	3/22/18	PB		0.49	0.55	0.52	0.53	0.24		0.28	0.42	0.46	0.38	0.42
BLK	POLLED		BC PROGRESS 315U				MJB PERFECT 0582X							
MJB RANCH LODGE GRASS MT			MJB RANCH LODGE GRASS MT											
MMM UNTOUCHABLE W810			22	11.6	-0.7	68	99	17	51	7.2	-0.2	9.5	-0.09	0.54
199405	8/27/09	PB	374	0.68	0.84	0.81	0.81	0.69		0.57	0.57	0.63	0.51	0.56
BLK	POLLED		DLCC ASTOUND 48S				BRANDY CREEK 68J							
TRIPLE M INCORPORATED CLINTON NC			MJB RANCH LODGE GRASS MT; TRIPLE M INCORPORATED CLINTON NC											
NFL PROGRESS DSB014			3	8.0	1.5	82	129	-2	39	7.0	-0.3	11.7	-0.11	0.15
206246	3/28/14	PB	47	0.64	0.80	0.76	0.73	0.53		0.46	0.69	0.69	0.59	0.65
BLK	POLLED		BC PROGRESS 315U				NICHOLS BEVERLY							
NICHOLS FARMS LTD BRIDGEWATER IA			NICHOLS FARMS LTD BRIDGEWATER IA											
NFL UNTOUCHABLE DSC042			1	10.9	1.0	68	107	15	49	6.7	0.1	5.7	-0.08	0.08
208337	3/21/15	FB	10	0.50	0.64	0.58	0.58	0.29		0.29	0.32	0.44	0.27	0.41
BLK	POLLED		MMM UNTOUCHABLE W810				NICHOLS PERFECTION Z909							
NICHOLS FARMS LTD BRIDGEWATER IA			NICHOLS FARMS LTD BRIDGEWATER IA											
NICHOLS BLACK JAC DSH024			3	8.5	2.0	79	117	28	67	4.7	-0.3	-14.1	-0.12	0.75
217505	3/21/20	FB		0.41	0.59	0.53	0.53	0.17		0.22	0.21	0.39	0.16	0.35
BLK	POLLED		NFL BLACK JACK DSD051				MMM LADY B802							
NICHOLS FARMS LTD BRIDGEWATER IA			DLCC RANCH PIERZ MN											
NICHOLS BLK JACK DSJ052			1	5.5	3.0	72	115	28	64	2.5	-0.2	6.1	-0.14	1.05
219423	3/31/21	FB		0.45	0.53	0.48	0.48	0.18		0.23	0.38	0.40	0.32	0.39
BLK	POLLED		NFL BLACK JACK DSD051				MMM LADY B802							
NICHOLS FARMS LTD BRIDGEWATER IA			NICHOLS FARMS LTD BRIDGEWATER IA											
NICHOLS DS DSG050			1	7.9	3.1	59	89	33	62	5.1	-0.3	-12	-0.11	0.11
215517	4/20/19	FB	7	0.44	0.51	0.47	0.48	0.21		0.22	0.33	0.39	0.29	0.35
BLK	POLLED		NICHOLS DS A406				NICHOLS PERFECTION Z915							
NICHOLS FARMS LTD BRIDGEWATER IA			NICHOLS FARMS LTD BRIDGEWATER IA											
NICHOLS PROGRESS DSJ038			1	6.1	3.1	94	149	15	62	4.1	-0.1	31.2	-0.08	0.67
219463	3/29/21	PB		0.46	0.51	0.46	0.48	0.20		0.23	0.39	0.40	0.33	0.38
BLK	POLLED		NFL PROGRESS DSF030				NFL MISS UNIVERSE DSD090							
NICHOLS FARMS LTD BRIDGEWATER IA			MJB RANCH LODGE GRASS MT											
NICHOLS UNTOUCHABLE DSH019			2	6.9	2.2	82	124	18	59	5.7	0	-4.7	-0.07	0.35
217475	3/18/20	PB	5	0.54	0.70	0.58	0.57	0.26		0.32	0.37	0.45	0.27	0.39
BLK	POLLED		NFL UNTOUCHABLE DSC042				NFL PERFECTION DSC069							
NICHOLS FARMS LTD BRIDGEWATER IA			NICHOLS FARMS LTD BRIDGEWATER IA											

2024 SIRE SUMMARY - MAIN LISTING

Name			#Herds	CED	BW	WW	YW	Milk	MWW	CEM	Marb	CW	Fat	REA
Reg#	DOB	%	#Dcalves	Acc	Acc	Acc	Acc	Acc	Acc	Acc	Acc	Acc	Acc	Acc
Color	H/P/S		Sire	Owner(s)					Dam					
Breeder														
NICHOLS UNTOUCHABLE DSK048			1	5.4	3.6	71	103	16	51	3.0	-0.1	2.7	-0.11	0.02
220913	3/29/22	PB		0.44	0.50	0.45	0.44	0.18		0.21	0.36	0.37	0.31	0.37
BLK	POLLED		NICHOLS UNTOUCHABLE DSH019	NICHOLS FARMS LTD BRIDGEWATER IA					NICHOLS BEVERLY					
NICHOLS FARMS LTD BRIDGEWATER IA														
SKUNK RIVER INJECTOR			3	3.7	4.5	71	100	14	49	0.6	-0.3	-18.4	-0.11	0.12
120429	3/13/93	FB	12	0.46	0.50	0.50	0.50	0.28		0.26	0.31	0.36	0.27	0.35
RED	POLLED		MT CENTURY 949Y	DR T E FITZPATRICK LYNNVILLE IA					SKUNK RIVER CAROLYN II					
DR T E FITZPATRICK LYNNVILLE IA			DR T E FITZPATRICK LYNNVILLE IA; J & V VAN GORP INC NEWTON IA											
TC CASSANOVA 517C			1	18.1	-5.1	44	59	18	39	5.8	-0.2	-31.5	-0.08	0.25
208380	2/13/15	FB	33	0.46	0.69	0.62	0.59	0.37		0.31	0.36	0.48	0.30	0.42
RED	POLLED		CIMARRON FOREMOST 320A	TRIPLE CROWN SOUTH DEVON FARM RUSSELLVILLE MO					TC UDDERLY PERFECT					
TRIPLE CROWN SOUTH DEVON FARM RUSSELLVILLE MO														
TC DESIGN 671D			1	16.5	0.1	61	95	10	40	6.7	-0.6	-13.5	-0.12	0.54
210646	4/5/16	FB		0.47	0.54	0.46	0.46	0.20		0.22	0.35	0.40	0.31	0.38
RED	POLLED		TC BUCKAROO 412B	RANDY SEIDEL LOHMAN MO					TC ANN					
TRIPLE CROWN SOUTH DEVON FARM RUSSELLVILLE MO														
TC DOMINO 662D			1	15.3	-2.0	54	73	18	45	4.8	-0.1	-27.1	-0.09	0.22
210638	3/16/16	FB		0.48	0.56	0.45	0.45	0.18		0.22	0.33	0.39	0.28	0.37
RED	POLLED		CIMARRON FOREMOST 320A	HF SEIDEL LOHMAN MO					TC ZONE					
TRIPLE CROWN SOUTH DEVON FARM RUSSELLVILLE MO														
TC FABIO 823F			1	7.6	4.0	73	114	6	42	2.9	-0.4	-12.2	-0.11	0.68
214139	2/6/18	FB	8	0.27	0.58	0.52	0.50	0.23		0.21	0.17	0.31	0.13	0.27
RED	POLLED		TC BUCKAROO 412B	TRIPLE CROWN SOUTH DEVON FARM RUSSELLVILLE MO					TC UPPER CRUST					
TRIPLE CROWN SOUTH DEVON FARM RUSSELLVILLE MO														
TC JACKPOT 1109J			1	6.8	3.1	59	88	21	51	0	0	-17.7	-0.10	0.46
218891	2/3/21	FB		0.51	0.58	0.55	0.53	0.28		0.31	0.40	0.47	0.37	0.42
RED	POLLED		CIMARRON SUPERIOR 442	TRIPLE CROWN SOUTH DEVON FARM RUSSELLVILLE MO					TC TINA					
TRIPLE CROWN SOUTH DEVON FARM RUSSELLVILLE MO														
TC JACKSON 109J			1	11.9	0.1	59	84	15	44	4.2	-0.2	-15.2	-0.08	0.27
218534	2/5/21	FB		0.49	0.58	0.54	0.52	0.19		0.23	0.29	0.41	0.26	0.36
RED	SCURRED		TC GUNSLINGER 922G	TRIPLE CROWN SOUTH DEVON FARM RUSSELLVILLE MO					CIMARRON CLIMAX 302A					
TRIPLE CROWN SOUTH DEVON FARM RUSSELLVILLE MO														
TC JOSEPH 107J			1	17.6	-3.2	61	83	14	44	5.9	-0.3	-18.5	-0.08	0.51
218645	2/3/21	FB		0.47	0.55	0.48	0.46	0.17		0.21	0.34	0.40	0.31	0.37
RED	POLLED		TC CASSANOVA 517C	TRIPLE CROWN SOUTH DEVON FARM RUSSELLVILLE MO					TC GEM 934G					
TRIPLE CROWN SOUTH DEVON FARM RUSSELLVILLE MO														
TC JUSTICE 122J			1	17.7	-3.7	44	65	10	32	7.3	-0.4	-21.6	-0.08	0.22
218540	2/13/21	FB		0.44	0.51	0.46	0.45	0.17		0.21	0.34	0.39	0.30	0.38
RED	POLLED		TC CASSANOVA 517C	HF SEIDEL LOHMAN MO; TRIPLE CROWN SOUTH DEVON FARM RUSSELLVILLE MO					TC GLAMOUR GIRL 919G					
TRIPLE CROWN SOUTH DEVON FARM RUSSELLVILLE MO														
TLC CROWN 920H			2	17.0	-2.9	39	56	17	36	7.6	-0.2	-30.0	-0.11	0.31
219546	5/18/20			0.38	0.52	0.46	0.48	0.09		0.17	0.07	0.31	0.05	0.28
RED	POLLED		TLC CROWN ROYAL 1023C	DLCC RANCH PIERZ MN					TLC BEAUTY 920W					
THOMPSON LAND & CATTLE CO. MOTLEY MN														
TLC GENERAL PATTON			4	10.8	-1.3	48	77	19	43	2.5	0	-21.1	-0.04	-0.15
209702	5/5/15	FB		0.45	0.50	0.46	0.47	0.16		0.22	0.34	0.40	0.31	0.36
BLK	POLLED		DLCC ADMIRAL 12A	THOMPSON LAND & CATTLE CO. MOTLEY MN					TLC DAISY DUKE 3802					
THOMPSON LAND & CATTLE CO. MOTLEY MN														
X-E DEPUTY D908			5	12.0	1.3	58	86	15	44	3.8	-0.4	-14.7	-0.09	0.30
211556	2/7/16	FB	49	0.54	0.69	0.63	0.66	0.36		0.29	0.44	0.47	0.33	0.41
RED	POLLED		GUM HILL RED 530	DLCC RANCH PIERZ MN					X-E MISS LEO W908					
X-E STOCK RANCH MOSES LAKE WA														

2024 SIRE SUMMARY - GENETIC INDICATOR LISTING

Name	Reg#	DOB	%	#Herds	CED	BW	WW	YW	Milk	MWW	CEM	Marb	CW	Fat	REA
	Color	H/P/S		#Dealves	Acc	Acc	Acc	Acc	Acc	Acc	Acc	Acc	Acc	Acc	Acc
	Breeder			Sire				Dam							
Owner(s)															
DLCC HARRISON 3IH				1	11.0	-0.6	78	125	14	53	5.6	0	14.9	-0.08	0.54
217638	3/18/20	FB		2	0.24	0.47	0.42	0.44	0.19		0.17	0.17	0.28	0.14	0.23
BLK	POLLED			DLCC STOCKMAN 39C				RP CAVE 62C							
DLCC RANCH PIERZ MN KNN FARMS BAY CITY WI; VALLEY HILL FARM ELLSWORTH WI															
DLCC JED 107J				1	11.9	0	45	50	4	26	5.1	-0.2	-36.6	-0.10	0.10
219178	4/1/21	FB			0.42	0.48	0.44	0.46	0.20		0.21	0.35	0.39	0.30	0.35
RED	POLLED			DLCC DERBY 64D				DLCC SKYE 4Y							
DLCC RANCH PIERZ MN K&M CATTLE MCGREGOR MN															
DLCC JONATHAN 156J				1	8.3	0.9	58	88	20	49	1.8	-0.3	-14.7	-0.08	0.38
219237	5/15/21	FB			0.41	0.46	0.43	0.45	0.17		0.18	0.34	0.37	0.29	0.34
RED	POLLED			X-E DEPUTY D908				X-E MISS PATRIOT D825							
DLCC RANCH PIERZ MN MICHAEL VANDENBERG HAMMOND NY															
EBS ELKER EZCALVER 156H				1	13.2	-1.5	34	58	21	38	2.4	-0.1	-29.9	-0.09	-0.12
217891	3/23/20	FB			0.24	0.44	0.36	0.38	0.18		0.17	0.13	0.23	0.11	0.21
BLK	POLLED			EBS ELKER 523Z				EBS MISS ELKER 705T 410E							
ELKINGTON BROS & SONS IDAHO FALLS ID ELKINGTON BROS & SONS IDAHO FALLS ID															
EBS MISS ELKER 061H				1	9.8	2.2	62	92	9	40	2.6	-0.2	-19.2	-0.10	0.28
217885	3/10/20	FB			0.22	0.47	0.41	0.43	0.20		0.17	0.19	0.29	0.13	0.25
RED	POLLED			EBS ELKER MACHINE 419E				EBS MISS ELKER 807B							
ELKINGTON BROS & SONS IDAHO FALLS ID ELKINGTON BROS & SONS IDAHO FALLS ID															
JVM EGR HIGH ROLLER 076H				3	8.7	2.6	73	114	22	59	3.0	-0.2	9.2	-0.10	0.78
218114	10/26/20	FB			0.41	0.45	0.40	0.39	0.12		0.18	0.31	0.35	0.28	0.33
BLK	POLLED			MJB DILLON 689D				JVM EVE 702E							
JVM CATTLE COMPANY PELLA IA EMMA GNECH MALIN OR; JVM CATTLE COMPANY PELLA IA															
MJB NFL 953G				2	9.5	0.9	74	112	14	50	5.1	-0.2	-4.7	-0.10	0.26
216107	3/20/19	FB			0.23	0.42	0.36	0.36	0.21		0.19	0.20	0.25	0.17	0.22
BLK	POLLED			NFL PROGRESS DSB014				MJB LADY 3658A							
MJB RANCH LODGE GRASS MT DOUBLE RL CATTLE COMPANY LLC RIDGWAY CO															
NICHOLS UNTOUCHABLE DSJ037				1	13.6	0.3	69	105	13	47	9.1	-0.1	11.4	-0.09	0.24
219420	3/27/21	FB			0.38	0.47	0.42	0.44	0.15		0.20	0.29	0.35	0.23	0.32
BLK	POLLED			NFL UNTOUCHABLE DSC042				NFL BRANDY CREEK DSE030							
NICHOLS FARMS LTD BRIDGEWATER IA NICHOLS FARMS LTD BRIDGEWATER IA															
RP HONDO 5IH				2	12.1	-0.6	61	91	17	47	3.4	0	-1.3	-0.06	0.16
217261	3/5/20			3	0.26	0.39	0.38	0.36	0.18		0.18	0.16	0.24	0.12	0.20
RED	POLLED			DLCC COWBOY JO 81C				RP FLINT 02F							
R P FARMS SWANVILLE MN R P FARMS SWANVILLE MN															
TC GUNSLINGER 922G				1	10.9	1.4	73	111	6	42	4.6	-0.4	-10.1	-0.12	0.60
215822	2/5/19	FB		4	0.28	0.49	0.43	0.44	0.22		0.21	0.16	0.30	0.14	0.26
BLK	POLLED			TC BUCKAROO 412B				TC SUSIE Q							
TRIPLE CROWN SOUTH DEVON FARM RUSSELLVILLE MO TRIPLE CROWN SOUTH DEVON FARM RUSSELLVILLE MO															
TC HE-MAN 1IH				1	6.6	3.8	76	116	14	52	0.1	-0.3	-6.1	-0.10	0.51
217009	1/26/20	FB		1	0.19	0.45	0.38	0.36	0.18		0.16	0.07	0.22	0.06	0.18
RED	POLLED			TC FABIO 823F				TC DREAMY 661D							
TRIPLE CROWN SOUTH DEVON FARM RUSSELLVILLE MO TRIPLE CROWN SOUTH DEVON FARM RUSSELLVILLE MO; TIM KAUFFMAN LOHMAN MO															
WGF DUTTON				1	9.5	-0.9	51	74	14	39	0.1	-0.2	-26.6	-0.07	0.26
218109	3/9/21	FB			0.39	0.42	0.41	0.40	0.13		0.17	0.30	0.35	0.26	0.31
BLK	POLLED			JVM EASTON 750E				WGF ECHO							
CIERA STEINLICHT VALLEY FALLS KS CIERA STEINLICHT VALLEY FALLS KS															

TLC

Thompson Land & Cattle

SELLING BULLS OUT OF PROVEN MATERNAL SIRE

Registered Purebred South
Devon and Angus/Red Angus
South Devon Poundmakers

*35 Bulls Currently on Test
Videos Available in April
Delivery Available Mid-May
Yearling Heifers for Sale*



*Bulls of this
caliber available*



You can find it all at Thompson Land & Cattle

THOMPSON LAND & CATTLE

6629 100th Street SW, Motley, MN 56466

Jace (801) 391-8989 • Email thebrick25@gmail.com

www.thompsoncattle.com • Females and Semen for Sale Private Treaty

South Devon Angus crosses that work for the beef industry!

ALSO SELLING FALL YEARLING BULLS AT THE MIDLAND BULL TEST

The Backbone of Our Future

South Devon Juniors

ADVOCATES FOR THE BREED



2025 – Andrea Smith, donated by Hoxie Hill Farm, Hammond, NY



2025 – Lettie Brown, donated by Sadler Cattle Co., Anoka, MN & Hoxie Hill Farm, Hammond, NY



2024 – Peyton Volkman, donated by C/N Ranch, Big Timber, MT



2023 – Dallas Hill, donated by 9 Mile Ranch, Kristin Dykes, Walla Walla, WA in memory of Josh Dykes



2022 – Connor Porath, donated by KNN Farms, Bay City, WI



2020 - Shelby Krebs, donated by Gnech Farms, Malin, OR



2019 - Levi Kramer, donated by Thompson Land & Cattle, Motley, MN



2018 - Adree Stapp, donated by DLCC Ranch, Pierz, MN & Scotchlands Farm, Armstrong, BC



2017 - Nicole Kibler, donated by Bar E Cattle, Clinton, NC



2016 - Wyatt Lawrence, donated by DLCC Ranch, Pierz, MN



2015 - Saavy Weimer, donated by Dahl Land & Cattle Company, Gackle, ND



2014 - Katelyn Horner, donated by JVM Cattle Company, Pella, IA



2013 - Jacob Allen, donated by MJB Ranch, Lodgegrass, MT

Heifer will be presented at the 2026 NWSS, Denver, CO

2026 heifer is being donated by **Walnut Grove Farm & CS Livestock**
The Steinlicht Family, Valley Falls, KS



APPLICATIONS DUE NOV. 8, 2025

Send applications to: tvandermolen22@yahoo.com • www.southdevon.com

2025 NASDA

Steer Profitability

COMPETITION

REQUIREMENTS

- Steers only
- Entrant must be a NASDA member
- Animals must be entered in the NASDA database
- Either sire or dam on file in the NASDA database
- Birthdate range: 1/15/25-4/15/25
- Weaning date range: 8/15/25-10/15/25
- Castration must occur prior to weaning
- Steers must weigh 500-750 lbs. at delivery
- Steers must be polled or dehorned
- Any breed composition welcome

CONTEST GUIDELINES

- Entry of \$65/head
- Feedlot placement approximately November 1
- All decisions at the discretion of the feedlot
- Harvest will occur approximately May 2026
- Entrant will receive reports on monthly feed and health
- Reports provided on final feedyard data and final carcass performance data

DETAILS

- All steers on GrowSafe feed intake system throughout the entire project
- Individual intake and gain information on all steers
- Monthly weights on all steers
- Steers will be fed at the University of Missouri Beef Research & Testing Farm in Columbia, MO
- Monthly bill detailing specific expenses on each steer

Register by October 15, 2025

WWW.SOUTHDEVON.COM

Or call 320-249-2130 for more information



NORTH AMERICAN
South Devon
ASSOCIATION

“The South Devon cattle range out and do really well in our country and environment.” Originally, the Grande Ranch in Martinsdale, Montana added South Devon to their breed rotation because of their maternal value, longevity and fertility. “They fit our crossbreeding mix really well.” In addition, “the South Devon-sired calves have great muscle, ribeye and bring marbling into our carcasses.”

John Grande

Grande Ranch, Martinsdale, Montana



The Profitable English Outcross

The USDA Meat Animal Research Center (MARC) cross-breed EPDs bare this observation out. When looking for an English breed to cross with Angus, their data reveals that after Angus, the Average South Devon has more marbling than any other breed and more ribeye area than any other British breed alternative in the MARC cross-breed database.



 **IGS** Multi-breed
Genetic Evaluation

PO Box 850 | Big Horn, WY 82833
303-770-3130 | info@southdevon.com

www.southdevon.com

DLCC RANCH

SOUTH DEVONS | POUNDMAKERS | NAVIGATORS

33rd Annual Production Sale

Accessible Heterosis ✓ Cow Longevity & Fertility ✓ Terminal Value ✓
Elite Eye-Appeal ✓ Red or Black Options ✓ Backed by Science ✓

DLCC Gold Dust 64G NASDA# 216262 **Top 5% API | Top 2% TI ----- His Sons Sell!**

The most exciting bull in the South Devon breed in decades. Two-time National Champion Bull. His progeny provide elite eye-appeal with no sacrifice of performance genetics. His sons ranked #1 in average marbling and #3 in average carcass weight in a commercial progeny test compared to 13 popular Sim-Genetics AI sires. His combination of superior phenotype and industry-leading EPD offers endless potential to capture outcross genetics, and heterosis in the commercial business, or develop a foundational purebred herd.



April 19, 2025

1:00 PM CT - Pierz, MN

Honest Cattle. Real Results.

Selling 120 lots of South Devon & South Devon designed composites
70 Bulls and 50 Females

Request a Catalog

www.DLCCRANCH.com

Dar Giess: (320)-249-2130 | Lane Giess: (320)-293-1647 | Wyatt Lawrence: (763)-242-2804



NICHOLS SUPERIOR BEEF GENETICS

We've Come A Long Way Since 1998

The commercial market-place has responded! Real world cow/calf operations have found that Nichols South Devons' have delivered as promised and they are putting their money on them... It's because they have added heterosis, fertility, increased weaning weights and top prices at sale barns. Feedlots have realized feed efficiency, rate of gain and bottom line profits. Those who are selling "locker beef" have gained new customers because of their really good tasting, tender beef. We have and will continue to live up to our name to provide and deliver Superior South Devon Beef Genetics that add value from Conception to Consumer.



by dave nichols



NFL Untouchable F62 (214573) exceptional length of body and mass combined with his CE, Weaning wt, Scrotal, and Yearling wt EPDs. He's sound, moves like an athlete and tolerates Fescue pastures. His problem free daughters are Magnificent. Real Cowboys love him.

BW	WW	YEAR	MILK	MWW
+0.1	+77	+111	+19	+56
CE	FAT	RE	MAR	CW
+13	-.09	+54	+0	+21

NFL Untouchable DSH019 (217475) is a Trait Leader for Wean and Year wt. He's average for Birth wt. and in the top 33% for nine out of ten of all the other traits. He's homo polled and black. His dam's "can't miss pedigree traces to Cimarron Rebel 941W and Double Doozie

BW	WW	YEAR	MILK	MWW
+2.5	+88	+132	+18	+62
CE	FAT	RE	MAR	CW
+5.8	+0.07	+4.7	+0	-2.9



2188 Clay Avenue
Bridgewater, Iowa 50837



office 641-369-2829
Cell 641-745-5241