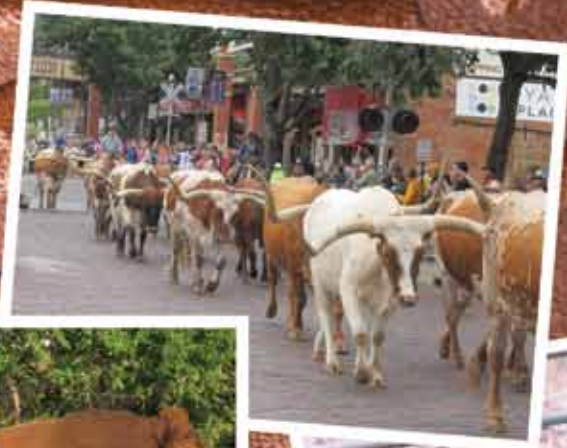


South Devon 2015 SIRE SUMMARY



- INSIDE THIS ISSUE:**
- ◆ **US Meat Animal Research Center Update**
 - ◆ **World Tour Highlights**
 - ◆ **2015 National Show**

PRSR STD
U.S. POSTAGE
PAID
DENVER, CO
PERMIT NO. 5377



WHERE IT ALL STARTED...

...In our continued effort and dedication to Performance Testing, we began testing South Devon cattle for Feed Efficiency at Midland Bull Test on their GrowSafe bunks and that began the discovery of the Superiority of the South Devon Breed for Feed Efficiency. As Midland Bull Test's Longest Continuous Participant – For 47 Years - we recognize the importance of Performance Recording. Now we recognize the critical need for Testing and Measuring Feed Efficiency and how it is an integral part of the Profit Equation! Now we know – wherever they have been tested – South Devon cattle rise to the top!



Selecting for South Devon genetics that fit our environment since 1987. The main cow herd is still grazing the first week of February. Red or Black, come see our tremendous offering of More Bulls and Better Bulls in 2015.

Selling Top Cattle to Top Cattlemen

A Big Thank You to All of Our Repeat Customers



Jim and Mary Brown
– NASDA 2014
Seedstock Producer
of the Year

www.mjbcattle.com

MJB Swagger 330Z

694609



BW **+0.3**
WW **+41**
YW **+85**
Milk **+26**

A black and polled son of W810 – Sons and Many ½ brothers sell at Midland Bull Test, April 2, 2015. Also selling sons of Royal Lad 1139, 945X, Hudson Lad 017, Dundee 9Y and others Selling at these sales:

Midland Bull Test – April 2, 2015

Beef Country Breeders – December 2, 2015

South Devon Cattle Can Increase Your Profitability

- By creating Hybrid Vigor – 23% Advantage in Extra Pounds of Calf
- The Best British Cross – South Devon crosses Keep Angus Marbling, Add Muscularity and Increase Pounds of Saleable Carcass
- Add Feed Efficiency – By Lowering Feed Intake and Improving Feed Conversion – South Devon are One of the Top Breeds for Feed Efficiency and RFI

While many claim their cattle are Efficient -
Ours are Tested and Measured!!
Come to the Source for Efficient South Devon Genetics



Jim and Mary Brown
Box 259
Lodge Grass, MT 59050
(406) 639-2569

Jim cell – (406) 679-0309
Matt Brown (406) 679-1796
Jim Doubet (303) 638-2625

MIDLAND BULL TEST



1 *Salers, Simmental, Gelbvieh

2 *Red Angus, Hereford, South Devon, Murray Grey

3 *Black Angus **April** 2015



WWW.MIDLANDBULLTEST.COM

Steve & Lindsay Williams
406.322.5597
bulls@midlandbulltest.com
Columbus, MT



South Devon bulls sell at MBT!

South Devon bulls sired by cattlemen favorites!

- MMM Untouchable
- BC Romeo
- BC Progress



BC Progress

MJB Ranch-
2014 Top Performing
South Devon bull
at MBT



South Devon Sale Calendar

December 3rd | Beef Country Genetics
Hosted at MBT, Columbus, MT

Breeder Spotlight!

C & A Cattle, Fishtail, MT

2015 South Devon

Commercial Producer of the Year

20+ years, valued customer at MBT!

SOUTH DEVON

The efficient, maternal beef breed.



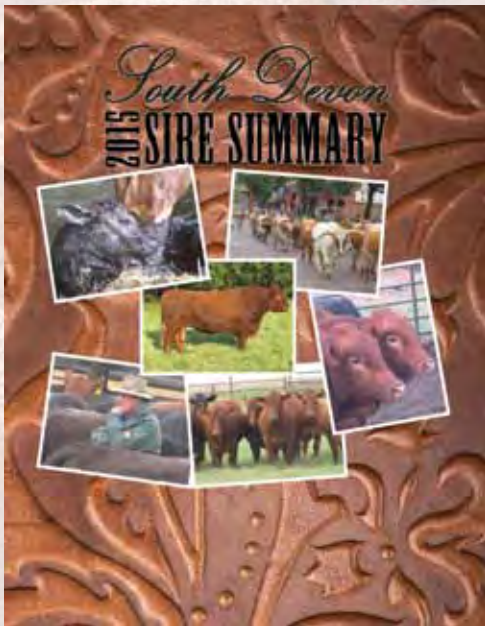
2015

North American South Devon Association

2015 Sire Summary



ON THE COVER



The photos on the front cover of the 2015 South Devon Sire Summary magazine are a representation of the variety of stops made on the 2014 World South Devon Tour and the 2015 Photo Contest winner.

Included in the photo collage are a group of females at the Bollenbach

Cattle Company, Kingfisher, Oklahoma. Chris Daley, Australia, studying a group of cow/calf pairs up on the mountain and a headshot of two bulls pictured in the sale pen at the Elkington Ranch in Idaho Falls, Idaho. Longhorn steers being trailed through the streets of Fort Worth, Texas at the start of the World South Devon Tour in September. A National Champion Bull posing for the World South Devon tour participants at the Walnut Grove Farm in Valley Falls, Kansas and the 2015 winning photo by Stephanie Steinlicht, Valley Falls, Kansas of 'A Mother's Love'.

FEATURES

Seedstock Producer of the Year MJB Ranch, Lodge Grass, Montana	10
Commercial Producer of the Year C & A Cattle Company, Fishtail, Montana	11
NASDA Hall of Fame Brandy Creek Farm, Franklinton, North Carolina	12
42nd National South Devon Show Parade of open and junior champions	24
US Meat Animal Research Center South Devon cycle test results	30

COLUMNS

On the Cover	4
Committee Appointments	5
President's Message	6
Board of Directors	6



CONTENTS

- 8 Awards**
Savvana Weimer Wins 2015 Youth Experience Heifer
- 14 Photo Contest Winners**
First and Second Place Photos
- 16 Show Results**
Results from the Iowa State Fair, Minnesota Beef Expo, Minnesota State Fair and NILE
- 18 Looking Back**
A fun look at the history of South Devon
- 20 News & Notes**
News from the South Devon Association
- 34 NASDJA News**
Boots, Buckles and Banners...
- 42 People & Places**
South Devon breeders out and about
- 42 Sale Results**
Elkington Polled Herefords and South Devons
- 45 2014 South Devon Hallmark Dams**
- 48 2015 South Devon Sire Summary**
- 66 NASDA Membership Directory**
- 70 South Devon World Association World Congress & Tour**
A look back at the 9th World Congress and Tour
- 74 Advertisers Index**

Committee

Appointments

Executive
Dar Giess, Chairman
Steve Elmore, Jim Brown

Awards
Lynn Giess, Chairman
Mary Brown, Shawn Van Wyk

Rules & Ethics
Jack Schutte, Chairman
Steve Elmore, Shawn Van Wyk

Foundation
Jordan VanderMolen, Chairman
Mike Steinlicht, Jeff Dahl, Mike Vandenberg

Finance
Shawn Van Wyk, Chairman
Jeff Dahl, Kurt Nelson

Sales & Events
Jim Brown, Chairman
Jordan VanderMolen, Kurt Nelson, Mike Vandenberg, Jeff Dahl

Show
Dar Giess, Chairman
Shawn Van Wyk, Jim Brown, Joel Popken

Promotion
Steve Elmore, Chairman
Lynn Giess, Jeff Dahl, Mary Brown, Lee Leachman

Junior Advisory
Lynn Giess, Chairman
Mary Brown, Jordan VanderMolen, Mike Steinlicht

Membership
Mike Steinlicht, Chairman
Jordan VanderMolen, Mike Vandenberg, Kurt Nelson

Carcass & Performance
Jeff Dahl, Chairman
Jim Brown, Kurt Nelson, Lee Leachman



President's
Message



This past year, cattlemen of all breeds experienced a much-needed up-swing in all classes of cattle. Looking back, South Devon breeders experienced a new demand for our breed. With lower feed costs and good demand for beef, our industry has made great strides in improving the standard and benchmark of our product.

South Devon cattle are unique with many favorable genetic advantages that add value to cow/calf operations, feedlots and the packing industry. Raising South Devon cattle is a joy, compared to other breeds. Their fertility and longevity combined with all the other known traits important to cowherds, explains why South Devon's are utilized in so many composite herds. Docility after, birth weight is huge in selection, as independent cattlemen really don't enjoy or need any nonsense in their day-to-day lives.

South Devon cattle are also being discovered as a very efficient breed in terms of feeding. Wouldn't any feeder like to feed less and gain the same or more? Less feed cost helps the feeder navigate through high-priced calves that in the end bring more return. Feedlot operations also benefit from feeding these docile cattle when moving and handling them.

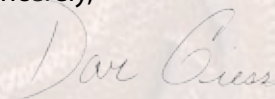
Looking ahead, the South Devon breed looks forward to adding a couple new shows this year, to fur-

ther expose these gentle and productive cattle to more people. The U.S. Meat Animal Research Center is also continuing on course, providing favorable information from the testing cycle about South Devon to the cattle industry. Carcass quality and feed efficiency are being measured, so our breed can qualify their value-added genetics.

The 2014 USA World South Devon Tour and Conference, is now in the record books. Many operations rolled out the red carpet, with food, refreshment, entertainment and a lot of really good South Devon cattle. The generous hospitality was really highlighted daily and the common thread of benefiting the South Devon breed was magnified during the tour. On behalf of all of us who traveled, hosted and helped in any way, thank you for the support and time that you dedicated to this epic event. Our breed is much like the people, fun to be around, glad to help and can't wait to do it again.

On behalf of the entire NASDA board, I'd like to thank all customers, cattlemen, members, juniors and researchers for helping bring this breed into the hearts of American cattlemen and women.

Sincerely,



Dar Giess, NSDA President

**2015 NASDA
Board of Directors**

Dar Giess, President

33424 183rd Street • Pierz, MN 56364
(320) 468-0235 • darlynn@fallsnet.com

Stephen Elmore, Vice President

1235 W Mt. Gilead CH Rd. • Clinton, NC 28328
(910) 385-6200 • sandbelmore@centurylink.net

Shawn Van Wyk, Treasurer

278 Hwy 225 • Searsboro, IA 50242
(641) 593-6674 • vanwykwoodbld@iowatelecom.net

Mary Brown

Box 259, Owl Creek Road • Lodge Grass, MT 59050
(406) 639-2569 • Fax: (406) 639-2568

Mike Vandenberg

55 Ward Road • Hammond, NY 13646
(315) 744-4273 • windmilllivestockny@yahoo.com

Mike Steinlicht

16764 North Cedar Rd. • Valley Falls, KS 66088
(785) 224-8860 • M_Steinlicht@yahoo.com

Jack Schutte

58 Bridger/Fromberg Rd. • Bridger, MT 59014
(406) 662-3192 • jackschutte99@gmail.com

Jeff Dahl

6442 55th Ave SE • Gackle, ND 58442
(701) 485-3762 • jldahl@daktel.com

Jim Brown

Box 259, Owl Creek Road • Lodge Grass, MT 59050
(406) 639-2569 • mjb_cattle2@hotmail.com

Lynn Giess

33424 183rd Street • Pierz, MN 56364
(320) 468-0235 • darlynn@fallsnet.com

Kurt Nelson

W5137 290th Ave. • Bay City, WI 54723
(715) 594-3805 • netnls@bevcomm.net

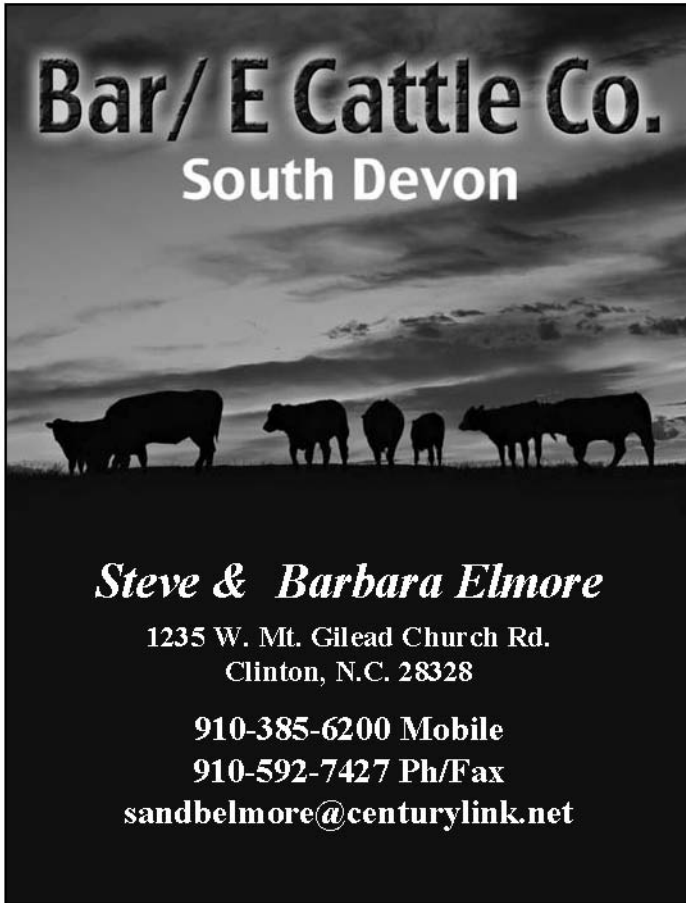
Jordan Vander Molen

1186 133rd St. • Pella, IA 50219
(641) 521-9917 • jordanjvm@gmail.com



Bar/ E Cattle Co.

South Devon



Steve & Barbara Elmore

1235 W. Mt. Gilead Church Rd.
Clinton, N.C. 28328

910-385-6200 Mobile

910-592-7427 Ph/Fax

sandbelmore@centurylink.net

Hill Crest

South Devon

Family owned since 1974

Shawn, Sara, Brandon, Payton and Blake Van Wyk

401 460th Ave., Grinnell, IA 50112

(641) 593-6676 home • (641) 990-2632 cell

vanwykwoodbld@iowatelecom.net



Breeding Stock & Semen For Sale
Purebreds and Composites
Focusing on Moderate-Framed & Easy-Fleshing Cattle

Four J Ranch & Six Bar Livestock

Time-Tested Maternal Genetics

Some of the Best Cow Families in the Breed

Black Range Bull Prospects for Sale

Bred Heifers and Cows Available this Fall

Contact

Four J Ranch

58 Bridger Fromberg Rd.

Bridger, MT 59014

406.855.8438 - Jack

jackschutte99@gmail.com

6 Bar Livestock

28 Bent Lane

Bridger, MT 59014

406.860.9028 - Kevin





Savvy Weimer and Jeff Dahl at the 2015 Awards Banquet, Denver, CO.

Savvana Weimer Wins **2015 Youth Experience Heifer**

Savvana (Savvy) Weimer is the 2015 recipient of the North American South Devon Association Youth Experience Heifer, donated by Dahl Land & Cattle Company, Gackle, ND.

Savvy is a sophomore at Roberts High School in Roberts, Montana, a small town near Red Lodge. She is involved in basketball, volleyball, track, FFA, 4-H, BPA, student council and National Honor Society. She currently serves as secretary of FFA and 4-H, student council president and captain of the volleyball and basketball team. She has received Academic All-State for two consecutive years. She is also active in FFA Livestock Judging, Prepared Speaking and Agronomy. She is involved in the beef, swine and poultry project in 4-H and has shown market steers and breeding beef. She lives on her family's ranch in Bridger, MT and cares for her own cows, chickens, dog, horse and goats. "Granting her the opportunity to participate in your prestigious South Devon Youth Experience Program would greatly enhance both, her as a South Devon breeder and as an individual. She will prove to be completely devoted to this program

and will go on to make the South Devon breed proud, just like she's done with many other programs and organizations she has worked with," said Audrey Walliser-Lindgren, owner of Cimarron Cattle Company. "Having the privilege to receive the South Devon heifer would be a great learning opportunity for me," said Savvy.



DLC Ms Hudson 429 an April 22, 2014 daughter of DLCC Hudson 82U was selected from a pen of four pairs.

The 2015 North American South Devon Association Youth Experience Heifer was chosen by the 2014 World South Devon Tour participants from a group of four heifers at the Dahl Land & Cattle Company stop.



The 2015 Youth Experience Heifer was selected by a vote of the World South Devon Tour participants at the Dahl Land & Cattle Company stop in Gackle, North Dakota.



Savvy Weimer was presented with the 2015 NASDA Youth Experience Heifer at the 2015 National Western Stock Show, Denver, CO. Pictured with Jeff Dahl, Dahl Land & Cattle Company and her father, Kevin Weimer.

*Celebrating 25 Years
of Breeding Excellence*

*It's Not Just Cattle
It's People Too*



- *Confidence in our breeding program*
- *Assisting us with our commitment to promote the beef industry*
- *Allowing us to provide you with superior customer service*



MJB Ranch

NASDA 2015 Seedstock Producer of the Year

The MJB ranch located just east of Lodge Grass, Montana, on the Crow Indian Reservation was awarded the 2015 Seedstock Producer of the Year award at the recent North American South Devon Association (NASDA) awards banquet in Denver, Colo.

The Brown family, are long-time supporters of the South Devon breed, the association and junior activities. Jim and Mary are joined by son, Matt, for the day-to-day operation of the ranch. Matt is joined by his wife, Jenna, daughter Madie and son McCade. Daughter Sherry (Doubet) and her husband, Jim, along with their sons, Curtis, Cody and Justin, come up from Parker, Colorado, to help out whenever time allows. Son Dale lives nearby in Billings with his wife Jennifer and children Kate, Wyatt and Dane. The 5th generation now helps out on the ranch and a 6th generation has just arrived in May, with the birth of Jim and Mary's first great granddaughter, Chesney Rylin (Curtis). Both Jim and Mary serve on the NASDA Board of Directors.

The ranch consists of cattle and farming. There are 320 South Devon influence cows along with Salers, Optimizer, Angus and Hereford purebreds plus 60 ET recipients. South Devon and Angus bulls are marketed at Midland and the fall Big Country Sale. Composite South Devon bulls are sold private treaty and at Leachman's of Colorado. The farming consists of spring and winter wheat, alfalfa hay and alfalfa seed. Additionally, malting barley and oats are sometimes grown as well. The land is made up of both deeded and leased land.

The Brown family came to Montana from Lampasas, Texas in 1913. Jim H. and nephew W.J 'Bill' Brown came on the train after cholera wiped out a swine enterprise in New Mexico. Bill wanted to come to Montana and Jim, recently married, wanted to go back to Texas. The differences were agreed to be settled upon the toss of a coin. Jim lost the coin toss and they headed north. They got off the train in Sheridan, Wyoming. Willis Spear happened to be at the Sheridan Inn and hired the two Texas cowboys immediately. At that time Spear Brothers Cattle Co. had the entire Crow Indian Reservation leased.

Jim H. Brown got into the registered Hereford business in 1947. In the early 50's bulls were line-bred Beau Donald's and line bred Britisher from Performance outfits.

The Brown family began performance testing bulls shortly after the development of the Midland Bull Test in 1962. Browns began entering bulls in 1968. The family has the prestige of being the longest continuous participant at Midland, performance testing there for 46 years.



Jim & Mary Brown, MJB Ranch

South Devon cattle were added at MJB in 1988 with a share in the Denver Champion Tiffany purchased from Dar Giess. Early cows came from DarLynn, Scott Bollenbach, Dewey Schaffer and Leachman of Montana. "In our first test of South Devons at Midland, the Top gainer over all breeds at Midland was a South Devon bull," said Jim Brown.

The MJB program has received many different awards at Midland and have had the World Champion Pen of Bulls in 3 different breeds; Hereford, Salers

and South Devon. Just as they believed performance testing was a critical step in beef cattle production, they also believe that the efficiency testing being conducted at Midland with the GrowSafe efficiency equipment is also a critical step in the beef cattle industry.

The ranch has bred, raised and used many of the great sires and bloodlines in the South Devon breed. Leachman Prime Time 9859G was bred by MJB in 1997. Cimarron Superior 442 semen was purchased and used, Cimarron Hustler 810H (sire of 2 World champion Pen of Bulls at Midland) called the pastures at MJB home. DLCC Sure Enuf and MJB Romeo were important cow herd builders. Efficiency leader and the current High \$Profit EPD sire, BC Progress 315U was bred in the Big Country herd at MJB, that is owned with Leo McDonnell Jr. of Columbus, Montana. "When Curtis and Cody were old enough to show, we started to exhibit a few heifers at Denver," said Brown. "Charles Terry and Dar Giess were very helpful in this project. Along the way, a few Champions were found and the boys learned how to work hard to achieve their goals. It all came together last year, when a judge liked our string and a terrific job of selecting and feeding by the Doubet family brought three Grand Champion banners home," he said.

"We feel the South Devon breed has numerous attributes to add to the commercial cow-calf sector. The South Devon cattle have been shown to excel in feed efficiency in most every trial they have been tested in. Couple being one of the most efficient beef breeds with being the most tender beef breed and their exceptional yield, marbling, and great disposition, the breed is well-positioned to contribute to most any commercial cattle operation," said Brown.

C & A Cattle Company

NASDA 2015 Commercial Producer of the Year

The 2015 NASDA Commercial Producer of the Year award goes to an individual or ranch that has consistently and over time used South Devon influenced genetics in their commercial cow/calf program. The North American South Devon Association was proud to present this year's award to C & A Cattle Company, Fishtail, MT. Manager's Doug and Anna Robinette have been purchasing South Devon bulls from Midland Bull Test, Columbus, MT for the past 20 years. They currently run 250-South Devon influenced and Red Angus cows. Because of their harsh conditions, they calve in April and said they like the South Devon breed because they calves always catch up and are able to be marketed in October. They are also impressed with the South Devon cattle in their rugged terrain.



Doug & Anna Robinette, C & A Cattle Company pictured far left with the National South Devon Tour participants.

C & A Cattle Company run 250-South Devon influenced and Red Angus cows in harsh conditions.



Brandy Creek Farm

Inducted into NASDA Hall of Fame

The North American South Devon Association inducted the Brandy Creek Farm, Ralph & Jenny Edwards, Franklin, North Carolina into the Hall of Fame during the National South Devon events held at the National Western Stock Show, Denver, CO in mid-January.

"The Brandy Creek Farm has made a substantial and long-lasting contribution to the South Devon breed," said Dar Giess, president of the association.

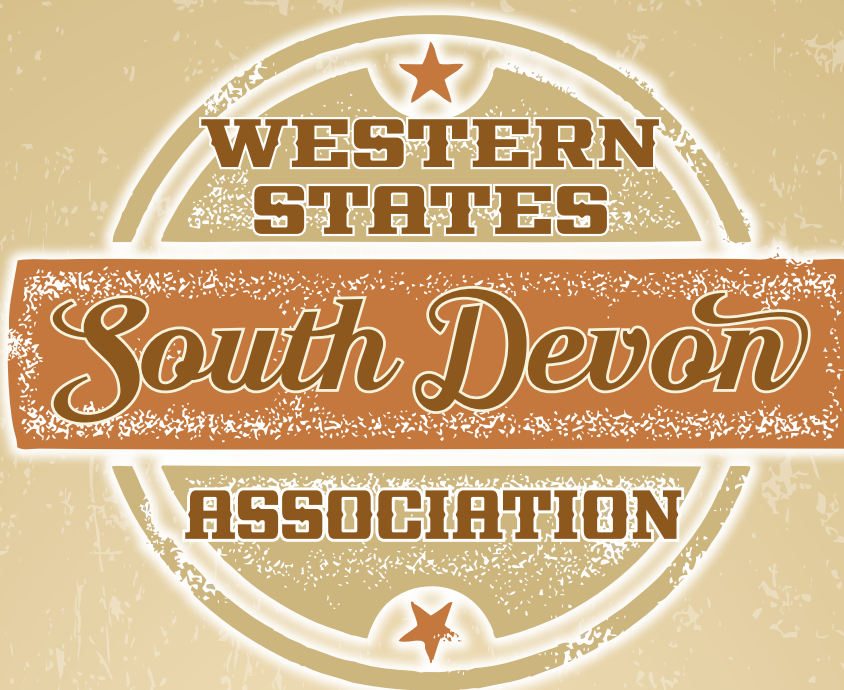
They were the first to bring the South Devon breed to North Carolina. "The Brandy Creek Farm black South Devon genetics were sought after by many and have left a lasting legacy," said Giess. Ralph and Jenny spent two decades on the Brandy Creek Farm raising South Devon cattle and selling a special strain of Bermuda grass, Tifton 44. Jenny said it was the cattle that really had Ralph's heart. "The Brandy Creek South Devon cattle strengthened local Angus herds with stronger maternal traits, better milk and healthier calves, incorporating hybrid vigor," said Martha Mobley, an extension agent in Franklin County. "They just made a difference in the community here – in the whole state, not just in Franklin County," said Mobley.

Ralph and Jenny were very active in the association, long-time members and Ralph served on the Board of Directors in many leadership positions.

Ralph was diagnosed with Parkinson's disease in 2007. In 2002 they sold the farm. Sadly Ralph passed away June 19, 2014. The Brandy Creek Farm South Devon cattle and Tifton 44 Bermuda grass can still be found all over the state of North Carolina and across the nation.

Jenny Edwards accepts the Hall of Fame award from the NASDA Board of Directors at the National Awards Banquet in Denver, CO.





INAUGURAL WESTERN STATES SOUTH DEVON SHOWS

October 9-13
BILLINGS, MONTANA



The Western States Open South Devon Show, Open Poundmaker Show and Junior South Devon Show will be held during the 2015 Northern International Livestock Exposition (NILE) in Billings, Mont. Scholarships will be awarded during the Western States South Devon Association Showdown Barn Party with entertainment the evening of October 12.

NILE EVENT SCHEDULE

FRIDAY, OCTOBER 9

Cattle Stalls Available for Move-In

SUNDAY, OCTOBER 11

South Devon Cattle Check-In Begins at Noon

MONDAY, OCTOBER 12

Junior South Devon Show at 10 a.m.

South Devon Showdown Barn Party and Entertainment at 6 p.m.

TUESDAY, OCTOBER 13

Open South Devon Show at 8 a.m., followed by Open Poundmaker Show
Cattle Move-Out Immediate Following the Show

Call Louann Fraser at 530-228-3567 for more information.

*Photo Contest
Winners*



Photo Contest Winners pictured at the 2015 NASDA Awards Ceremony, Stephanie Steinlicht and Gail Johnson.



*1st Place
"A Mother's Love"*

Stephanie Steinlicht, Valley Falls, KS

*2nd Place
"C'mon Mom"*

Gail Johnson, Anoka, MN



X-E Stock Ranch South Devons

Working Class Cows & Bulls



DLCC Patriot 5M
Spring calves on the ground.



Gum Hill 530

Using a red, polled, purebred bull from the Gum Hill herd in South Australia.

X-E
Stock Ranch

Lee & Connie Engelhardt
8345 Rd 16 NE (509) 750-4353
Moses Lake, WA 98837 xestockranchsd@gmail.com

Northern States South Devon Association



St. Croix Valley Bull Test – April 18
River Falls, Wisconsin • Offering KNN Farms Bulls

DLCC Annual Sale – April 25
DLCC Ranch, Pierz, Minnesota

NASDJA Junior Nationals – June 25-27
Morrison County Fairgrounds
Little Falls, Minnesota

NSSDA Picnic and Annual Meeting – Sept. 12
Whispering Spruce Farm, Milota, Minnesota

Minnesota Beef Expo – Oct. 15-18
St. Paul, Minnesota

Nettie Nelson, Secretary
(715) 594-3805
netnels@bevcomm.net

Jim Sadler, President
(612) 581-8706

The Perfect Gift For Any Occasion!

Tried and true recipes from the Northern States members.



Limited supply. Don't miss the opportunity to purchase a cookbook filled with family recipes, savory side dishes, holiday favorites and awesome desserts.

To order call or e-mail Nettie Nelson.

Iowa State Fair

Des Moines, Iowa



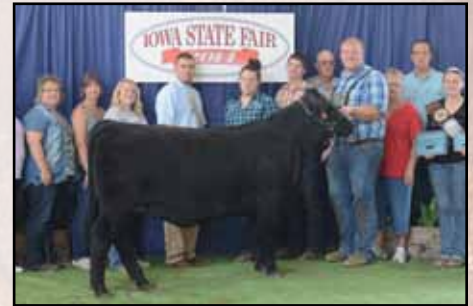
Grand Champion Bull

KNN Country Boy
Sire: KNN Ranger 37T - BD: 4/7/13
JVM Cattle Co., Pella, IA



Reserve Champion Bull

DLCC Two Step 84B
Sire: DLCC Shur Loc 99W - BD: 5/12/14
DLCC Ranch, Pierz, MN



Grand Champion Female

Junior Show Champion
TLC Jordie 3910A
Sire: TLD Deetz 9012 - BD: 5/3/13
JVM Cattle Co., Pella, IA



Reserve Champion Female

JVM Zella 203Z
Sire: MVM Sargent 654S- BD: 3/27/12
JVM Cattle Co., Pella, IA



NASDA Youth Ambassadors

Emilee & Jenna White



Reserve Champion Junior Show Female

DLCC Dancer 141T
Sire: DLCC Landmark 15R - BD: 10/1/07
Lane Giess, Pierz, MN

Group Classes

Produce of Dam: Walnut Grove Farm: Valley Falls, KS

Junior Get-of-Sire: Hillcrest South Devon, Grinnell, IA

Best Five Head: JVM Cattle Co., Pella, IA

What's an Eartag worth that **FADES** Nothing!

Our exclusive color-layered tag allows you to "permanently" engrave your own numbers and letters.

Ritchey mfg. co.
Since 1964

Ritchey color-layered tags are available in 2 styles; Original Arrowhead and Universal. The Universal tag can be installed with most major applicators and buttons on the market, made from the same high quality color-layered material.

Ritchey believes it is time for a quality product . . . one that you will always be able to see!

13821 Sable Boulevard
Brighton, CO 80601
Phone / 303-659-0681
1-800-EAR TAGS (327-6247)
Fax / 303-659-7880
www.ritcheytags.com
email: sales@ritcheytags.com

Send coupon for your personalized key chain and catalogue.

Initials _____
or Brand _____

(PLEASE ENCLOSE RETURN ADDRESS)

Minnesota BEEF EXPO

THE PREMIER BEEF EVENT OF THE UPPER MIDWEST



Champion Female

DLCC Poppy 108Z
Sire: DLC Mr. Rock 41W- BD: 10/15/12
Leah Giess, Pierz, MN



Reserve Champion Female

Midnight Jewel
Sire: Midnight Rider - BD: 5/1/14
Emilee White, Wadena, MN



Abby Penzenstadler, Chisago City, MN is the recipient of the 2014 MN Youth Beef Experience Program (MYBEP) South Devon Heifer provided by RP Farms, Swanville, MN and donated by members of the Northern States South Devon Association.

Thank You Minnesota Beef Expo South Devon Supporters

Class Sponsorships:

Badeland Cattle Company
Craig & Reba Cersovsky
JC Farms
JVM Cattle Co.
M & K South Devons
Royal Beef Genetics
Sadler Cattle Company
Valley Hill Farm
NASDA

MYBEP Heifer Sponsors:

KNN Farms
DLCC Ranch
Sadler Cattle Company
Oak Grove Stock Farm
Badeland Cattle Company
White Farms
Whispering Spruce Farm

Minnesota State Fair

NILE



Champion Female

DLCC Poppy 108Z
Sire: DLC Mr. Rock 41W- BD: 10/15/12
Leah Giess, Pierz, MN



Reserve Female

SC Junebug 61A
Sire: DLCC Shur Loc 99W - BD: 6/1/13
Kyle Stranberg, Maynard, MN



Reserve Senior AOB Bull

Wildcat
Sire: DLCC Whiplash 1Y • BD: 11/12/12
Superior Land & Livestock, Lincoln, CA

Looking Back



Standing next to the silver trophies awarded at the 1988 NAILE show in Louisville, KY are: Don Chilcott, Ocie, MO; Clifford Honeycutt, Harrison AR and the Judge of the show, Gary Minnish, VA Polytech.



Adrienne Nielsen, Joplin, MO readies her heifer for inspection by Judge Steve Radakovich at the 1983 NASDA Junior Heifer Show.



A South Brahvon bull, ½ South Devon and ½ Brahman pictured in the 80's.



The L-7 Ranch pen of five purebred bulls at the 1983 Midland Bull Test Sale in Billings, Montana.



The Reserve Grand Champion Bull, Teddy Bear at the Kansas State Fair, exhibited by Alumbaugh South Devons, Trenton, Missouri.



Harlan Terpstra, Lynnville, IA displays the docility of South Devon at the Iowa State Fair.



The 1986 Calgary Stamped Reserve Grand Champion Bull shown by High Chapparal Ranch, Lipton, SK.

BANNER



BANDIT

DOB **APRIL / 7 / 2014**

POUNDMAKER

BW +1.0 WW +48 YW +91 MILK +25 REA +0.18 MARB +1.0



DLCC COCOA 46Z



2014 **NWSS** GRAND **CHAMPION** JR. FEMALE


SIRE: LEACHMAN YOSEMITE X730Y

RBC BANNER BANDIT 401B

DAM: DLCC COCOA 46Z

CALL TO INQUIRE

ROYAL BEEF GENETICS, STARBUCK, MN 320 288 6128



News & Notes

Iowa State Fair to Host Summer National Poundmaker Show

The 2015 Iowa State Fair, Des Moines, Iowa will host the 1st Annual Summer National Poundmaker Show.

The show will be held in conjunction with the Iowa State Fair South Devon open and junior show on Monday, August 17, 2015.

To qualify to show in the Poundmaker South Devon Show, the females need to be 25% - 74.9% South Devon and the bulls 25% - 87.4% South Devon. The age classification will be the same as the purebred show. The same entry rules and premiums will apply for the Poundmaker show that now apply for the open show and will run concurrently with the open show.

For more information log on to www.iowastatefair.org.

Western States Association Formed

South Devon breeders from the Western states have formed a new association. Leading the new association is Louann Fraser, Lincoln, CA, president; Jacki Gnech, Macdoel, CA, vice president; Anne Smull, Lincoln, CA, secretary/treasurer and directors: Gino Gnech, Macdoel, CA, Steve Smull, Lincoln, CA and Chad Wright, Westmoreland, KS, Heidi Guertin, Lincoln, CA, director of hospitality. Junior Activities coordinators are Louann

Fraser and Jacki Gnech.

The 2015 Western States South Devon Association show will be held October of 2015 during the Northern International Livestock Exposition (NILE) in Billings, MT.

The event will feature a South Devon show, Poundmaker show and South Devon junior show. Scholarships will be awarded during the Showdown Barn Party, with entertainment following the event.

Anyone interest in joining the association or participating in the 2015 show should contact Louann Fraser, (530) 228-3567.

NASDA Board of Directors Meeting January 11, 2015

Summary of Actions

- Rule Change: Under Rule 5. Artificial Insemination and Ova Transfer, #3 changed to read: A blood type record of all sires used in artificial insemination must be on file with the NASDA providing the bull was alive on or after June 30, 1982. All other rules and bylaws were approved.
- Newly re-elected board members: Mary Brown, Lodge Grass, MT; Jeff Dahl, Gackle, ND; Dar Giess, Pierz, MN; Jack Schutte, Bridger, MT and newly elected: Mike Vandenberg, Hammond, NY.
- Positive review of the 2014 World South Devon Tour and Conference. Remaining funds will be used for breed promotion.
- 2015 'Junior Nationals' will be held in Little Falls, Minnesota.
- A Poundmaker show will be added at the Iowa State Fair schedule. A Poundmaker and Purebred show is scheduled at the Northern International Livestock Exposition in Billings, Montana, hosted by the Western States Association.

Continued on page 22...

Hillbilly Haven South Devons

Henny & Dawn Bruins
Box 712
Elk Point, Alberta, Canada T0A 1A0
(780) 724-4242
E-mail: dbruins555@hotmail.com
Selling Red South Devon Bulls Yearly.



SCOTCHLANDS FARM

Jock McArthur

1121 Mountain View Road
Armstrong, BC Canada V0E 1B0
(250) 546-6585

DAHL LAND & CATTLE LLP

Your Heterosis Headquarters!

RED ANGUS • SOUTH DEVON • POUND MAKERS



**The DLC F-1 Mother Cows
with their market-topping steer calves –**

The heart and soul of what we do!
She is fertile, sound, feminine and adaptable.

Cattlemen –

Are you looking to have a cowherd that will produce 20% more pounds of calf weaned per cow exposed?

Then you need to use the “right” genetics!

The Red Angus, Black Angus and South Devon breeds complement each other in a very positive manner. When crossed, they create a F-1 female that’s equal to any and superior to many!

We have the “right” genetics to improve your herd’s profit!



Annual Production Sale

Tuesday, May 5, 2015

1:00 p.m. CDT • Napoleon Livestock
Napoleon, ND

65 Range-Ready Yearling Bulls

150 Purebred and F-1 Yearling Heifers

DAHL LAND & CATTLE LLP

6442 55th Ave SE • Gackle, ND 58442 • jldahl@daktel.com • www.dahlcattle.com
Dan: (701) 424-3726 • Jeff: (701) 485-3762 • John: (701) 485-3766 • Jack: (701) 485-3206

*Call or write for a catalog or,
better yet, stop in for a visit!*

- Discussion on adding a show at the North American Livestock Exposition in Louisville, KY and participating in 1-2 farm shows in 2015.
- The National Tour will be held in North Carolina in 2016.
- Election of Officers: Dar Giess, president; Steve Elmore, vice president; Shawn Van Wyk, treasurer and Mike Steinlicht, secretary.

Letter C for 2015

The international letter code for 2015 is C. Remember to include the letter C as a part of every calf's tattoo in 2015. For example, a NASDA preferred tattoo would be 124C.

Membership Drive

The North American South Devon Association is promoting a membership drive for 2015. Any individual who recruits 5 new members in 2015 will receive a half page ad in the 2016 Sire Summary magazine. Those recruiting 4 new members will receive ¼ page. Anyone recruiting 3 members will receive a complimentary card ad. Those recruiting 1-2 members will receive a complimentary banquet ticket to the 2016 National Banquet, held during the events in Denver in mid-January. All recruiters will receive recognition on-line and in the 2016 Sire Summary magazine. Anyone recruiting 10 new members will receive a feature article on their operation in the 2016 issue. Recruitments can be a seedstock operation, commercial operation or business.

NASDA Elects New Board



2015 NASDA Board of Directors pictured from left to right, standing: Jordan VanderMolen, Pella, IA; Jeff Dahl, Gackle, ND; Shawn Van Wyk, Grinnell, IA; Mike Steinlicht, Valley Falls, KS; Steve Elmore,

Clinton, NC; Jim Brown, Lodge Grass, MT. Seated: Kurt Nelson, Bay City, WI; Keith Elkington, Idaho Falls, ID; Dar Giess, Pierz, MN; Mary Brown, Lodge Grass, MT and Lynn Giess, Pierz, MN; Not pictured: Mike Vandenberg, Hammond, NY.

Co-Op Promotion

Co-op promotional opportunities are available from NASDA. The NASDA will share 50% (with a maximum of \$400) of the cost of promotions for South Devon

events such as promotional booth and/or displays at fairs, expos, etc. This includes consignment sales, but excludes private and production sales. Prior approval by the NASDA Promotions and Publications Committee is required.

NASDA Photo Contest

The 2015 photo contest entries deadline is December 15, 2015. Entries will have the opportunity to appear on the cover of the 2016 Sire Summary and Membership Directory. Other winners will be used in additional publications and on the NASDA website. The photographer of the winning photo will receive a South Devon jacket, complimentary banquet ticket and recognition at the annual South Devon banquet held each year in Denver in mid-January. Second and third prize will also receive an award and be recognized. Send photo contest entries to Lynn Giess, darlynn@fallsnet.com.

South Devon Gentle Gems

The South Devon Gentle Gems is the women's auxiliary organization formed in the early years of the breed. The Gentle Gems help with junior activities, the ambassador program and promotional items. For more information on joining contact Lynn Giess, darlynn@fallsnet.com.

Youth Experience Heifer Applications Due Nov. 1

The deadline for the 2016 Youth Experience Heifer applications has been changed to Nov. 1. Juniors interested in applying for the heifer can log on to www.southdevon.com or e-mail Lynn Giess at darlynn@fallsnet.com for more information.

The 2016 heifer is being donated by the DLCC Ranch, Pierz, Minnesota.

NASDA is on Facebook

For up-to-date events and information log on to the North American South Devon Association Facebook page. Special thanks to Curtis Ohlde for keeping up the NASDA page. If you have photos or highlights from a South Devon event, e-mail to cwohldecattleco@aol.com.

2015 Calendar Highlights

Leachman Cattle of CO Spring Sale

March 30, 2015 • Wellington, CO
Contact Information: Lee Leachman
www.leachman.com

Midland Bull Test

April 9, 2015 • Columbus, MT
Contact Information: Steve & Lindsay Williams
406-322-5597

DLCC Ranch Annual Sale

April 25, 2015 • Pierz, MN
Contact Information: Dar Giess
320-249-2130

Dahl Land & Cattle Co. Annual Sale

May 7, 2015 • Gackle, North Dakota
Contact Information: John Dahl
701-485-3766

NASDJA 'Junior Nationals'

June 25-27, 2015 • Little Falls, MN
Morrison County Fairgrounds
Contact Information: Lynn Giess
320-468-0235

Iowa State Fair

August 17, 2015 • Des Moines, IA
Contact Information:
www.iowastatefair.com

Minnesota State Fair 4-H South Devon Show

August 20, 2015 • St. Paul, MN
Contact Information:
www.mnstatefair.com

South Dakota State Fair

August 29, 2015 • Huron, S.D.
Contact Information:
www.sdstatefair.com

Northern States Association Meeting & Picnic

September 12, 2015 • Milona, MN
Whispering Spruce Farm
Contact Information: Nettie Nelson
715-594-3805

Western States Show

October 10-17, 2015 • Billings, MT
Contact Information: Louann Fraser
530-228-3567 or www.thenile.org

Minnesota Beef Expo

October 15-18, 2015 • St. Paul, MN
Contact Information:
www.mnbeefexpo.com

Big Country Breeders Sale

December 3, 2015 • Columbus, MT
Contact Information: Jim Brown
406-639-2569

North Star Classic

December 5, 2015 • Valley City, N.D.
Contact Information:
www.northdakotawintershow.com
701-845-1401

National Show & Meetings

January 9-12, 2016 • NWSS, Denver, CO
Contact Information: www.nationalwestern.com

Popken South Devon & RP Farms Quality You Can Count On...



RP Belle 64B
Selling in the DLCC sale on
April 25, 2015



RP Buttercup 59B
Thank you Hanna Gnech,
Macdoel, CA for purchasing
Buttercup

At Popken South Devon and RP Farms we believe if you want to produce quality, you have to start with quality and it all starts with the bull.

You can view or purchase our quality South Devon Genetics at the National Show and Private Treaty.

Joel or Robert Popken
33360 220th Street
Swanville, MN 56382
(320) 547-2202

jpopken@wisper-wireless.com

Semen, Bulls, Bred and Open Females for Sale

National Western South Devon Junior Show, Denver, Colorado



Champion Female TLC Jordie 3910A
Sire: TLC Deetz 9012 - BD: 5/3/13
Shown by: Tayler Sammons, Pella, IA



Reserve Champion Female DLCC Ribbons 69A
Sire: DLCC Shur Loc 99W - BD: 4/15/13
Shown by: Lane Giess, Pierz, MN



Champion Senior Showman
Lane Giess, Pierz, MN



Reserve Champion Senior Showman
Leah Giess, Pierz, MN



Champion Junior Showman
Hanna Gnech, Macdoel, CA



Reserve Champion Junior Showman
Emma Gnech, Macdoel, CA

Thank You 2014 Junior Sponsors



Mitchell Sims, Hutchinson, MN was presented with the 2015 Golden Comb Award at the National Show.

Presenting the award to Mitchell was Jenna White, Senior NASDA Youth Ambassador and Kyle Stranberg, 2014 Golden Comb Recipient.

Champion Jr. Heifer

MJB Ranch, Lodge Grass, MT

Reserve Champion Jr. Heifer

Bar/E Cattle Co., Clinton, NC

Champion Jr. Showman

*Sampson McGregor Stock Farm,
Iron River, AB Canada*

Reserve Jr. Showman

Brandy Creek Farm, Franklinton, NC

Champion Sr. Showman

Elkington Brothers & Sons, Idaho Falls, ID

Reserve Sr. Showman

Midland Bull Test, Columbus, MT

YOU BECKIA'

**2015 NASDJA JUNIOR NATIONAL SHOW
& LEADERSHIP CONFERENCE**
**JUNE 24-27 at the MORRISON COUNTY
FAIRGROUNDS in LITTLE FALLS, MINNESOTA**

Wednesday, June 24
Arrival, Set-up and Registration

Thursday, June 25
Photo & Poster Contest Entries Due
Quiz Bowl, Marketing, Ag Olympics

Friday, June 26
Speech Contest, Showmanship
Bred-and-Owned Show Bulls and Females

Saturday, June 27
2015 'Junior Nationals'
Poundmaker & Purebred Steers, Heifers, Cow/Calf Pairs
Awards Ceremony

Complete information and entry forms available
on-line at www.southdevon.com

42nd National South Devon & Poundmaker Show

2015 Parade of Champions



Champion Bull
DLCC Two Step 84B

Sire: DLCC Shur Loc 99W - BD: 5/12/14
DLCC Ranch, Pierz, MN; Majestic Meadows, New Friendship,
MD; Showboat Cattle Co., Winchester, KS; Sadler Cattle Co.,
Anoka, MN; Popken South Devons, Swanville, MN



Reserve Champion Bull
DLCC Belmont 25B

Sire: DLCC Whiplash 1Y - BD: 3/24/14
DLCC Ranch, Pierz, MN



Champion Female
TLC Jordie 3910A

Sire: TLC Deetz 9012 - BD: 5/3/13
Tayler Sammons, Pella, IA



Reserve Champion Female
DLCC Loop 19B

Sire: MMM Untouchable W810 - BD: 3/21/14
Lane Giess, Pierz, MN



**Champion Poundmaker Bull
SC Yosemite 39B**

Sire: Leachman Yosemite X730Y - BD: 3/9/14
Kyle Stranberg, Maynard, MN



**Reserve Champion Poundmaker Bull
DLCC Legend 18A**

Sire: DLCC Whiplash 1Y - BD: 3/20/13
DLCC Ranch, Pierz, MN & MJB Ranch, Lodge Grass, MT



**Champion Poundmaker Female
JVM Ariel 305A**

Sire: JVM Purple Haze - BD: 5/7/13
JVM Cattle Company, Pella, IA



**Reserve Champion Poundmaker Female
BC Agate 3509A**

Sire: MMM Untouchable W810 - BD: 1/30/13
Big Country Beef Genetics, Columbus, MT



**Champion Poundmaker Cow/Calf Pair
Frasers Don't Look Ethel**

Sire: DLCC Sure Thing Too 119T - BD: 12/12/12
Fraser Ranch, Lincoln, CA



**Junior Champion Bull
KNN Country Boy 15A**

Sire: KNN Ranger 37T - BD: 4/7/13
JVM Cattle Co., Pella, IA & KNN Farms, Bay City, WI



**Spring Heifer Calf Champion
Fraser Lovie Dovie**

Sire: DLCC Sure Thing Too 119T - BD: 5/28/14
Hanna Gnech, Macdoel, CA



**Champion Senior Heifer Calf
MJB Arabella 3682A**

Sire: MMM Untouchable W810 - BD: 9/2/13
MJB Ranch, Lodge Grass, MT

Group Classes

**DLCC Ranch, Pierz, MN: Pair of Calves, Two Bulls, Produce of Dam, Jr. Get-of-Sire,
Best Five Head, Sr. Get-of Sire and Premier Breeder & Exhibitor
JVM Cattle Company, Pella, IA: Pair of Yearlings**

Thank You 2015 Sponsors!

Triple M Beef, Clinton, NC

DLCC Ranch, Pierz, MN

Dahl Land & Cattle Co., Gackle, ND

Walnut Grove Farm, Valley Falls, KS

Popken South Devon, Swanville, MN

NE/Mid-Atlantic South Devon Association

Western States South Devon Association

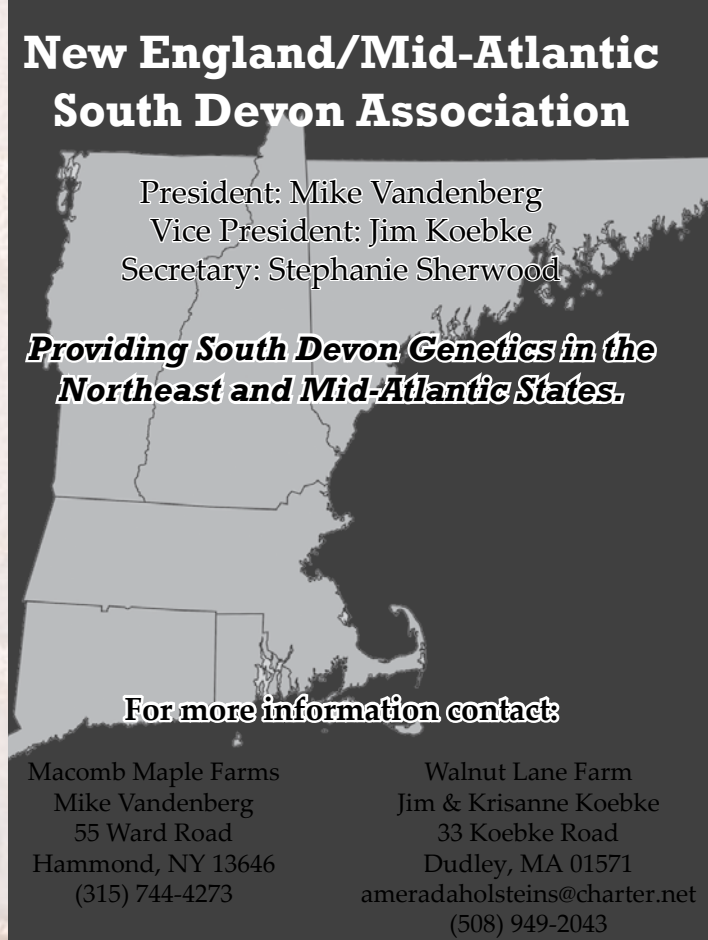
Sherry Doubet, Parker, CO

Designer Gene Technologies, Inc.

New England/Mid-Atlantic South Devon Association

President: Mike Vandenberg
Vice President: Jim Koebke
Secretary: Stephanie Sherwood

***Providing South Devon Genetics in the
Northeast and Mid-Atlantic States.***



For more information contact:

Macomb Maple Farms
Mike Vandenberg
55 Ward Road
Hammond, NY 13646
(315) 744-4273

Walnut Lane Farm
Jim & Krisanne Koebke
33 Koebke Road
Dudley, MA 01571
ameradaholsteins@charter.net
(508) 949-2043

Macomb Maple Farms

Selling Pure Maple Syrup.

South Devon Bulls and Females For Sale.

Your NE Headquarters for Quality South Devon
Breeding Stock.

Mike Vandenberg 55 Ward Road
(315) 744-4273 Hammond, NY 13646
E-mail: windmilllivestockny@yahoo.com

Pursuing a Passion of Excellence



TLC Jordie 3910A

*Grand Champion Female at 2014
NASDJA Junior Nationals*

*2014 Iowa State Fair Open
and Junior Shows*

2015 NWSS Open and Junior Shows

Undefeated show career!

Bred to KNN Ranger.
Co-owned with Thompson Land
and Cattle Company

JVM Ariel 305A

*Grand Champion Poundmaker Female at
2014 NASDJA Junior Nationals*

2015 NWSS Open Show

Bred to JVM Zeke 252Z

*For Sale private treaty off the farm Bulls,
Breeding Stock, and Show animals*



KNN Country Boy 15A

2014 Iowa State Fair Grand Champion Bull

Division Winner and Crowd Favorite at 2015 NWSS

Co-owned with KNN Farms

*Thank you to all buyers
and can't wait for 2105!*



*Special thanks to Katie Horner and family for
your purchases and all the help at Denver!*

Semen for sale on:

HS E Plurbis Unum 14T, JVM Yukon 150Y, JVM Zeke
252Z, KNN Country Boy 15A, TLC Red Romeo 512.

JVM Cattle Company

Jordan and Tayler Vander Molen
1186 133rd ST
Pella, Iowa 50219
(641)-521-9917

U.S. Meat Animal Research Center

Germplasm Evaluation Update

As many of the members of the North American South Devon Association are aware, the U.S. Meat Animal Research Center began sampling bulls from the breed in 2011 in order to evaluate their genetic merit in the germplasm evaluation program (GPE). Until this sampling, the last time South Devon bulls were evaluated in GPE was in Cycle I back in 1970-1972. Until these new sampling, the differences between South Devon and other breeds in the across-breed EPD adjustment factor process was based on approximately 150 progeny from 15 sires sampled in Cycle I. Clearly, a new sample of sires and progeny was warranted to update our estimates of how South Devon perform relative to other breeds of beef cattle.

In 2011, through the help of many of the breeders in the association, we were able to obtain semen on 13 different South Devon bulls to use in the project. These are listed in the following table:

Registration	Name	Registration	Name
135081	LEACHMAN PRIME TIME9859G	181063	DLCC PIKACHU 33P
161435	CIMARRON DYNAMO 812H	181632	DLCC SURE THING 34P
169690	DLCC BLACK ENUF 127J	183182	CIMARRON APOLLO 470P
174528	DLCC SURE-ENUF	185558	MJB ROMEO 125R
175085	DLC ROYAL LAD 21	188977	MJB SHUR LOC 106S
179442	MJB NORTH STAR 191N	190752	DLC THE ROCK 52
179887	HB PRIDE OF THE ROCKIES		

As of now 63 calves have been born to these sires in the 2012 and 2014 calf crops. In addition to increasing the number of South Devon progeny for use in breed comparison, we hope to produce a contingent of South Devon (3/4 and 7/8) bulls to mate to large numbers of GPE females; for this reason, matings were staggered between 2012 and 2014 to produce a contingent of 3/4 bulls from 1/2 blood cows born in 2012 (4 born in 2014). We will continue matings to produce high percentage South Devon females and males that can be compared to all of the breeds represented in the GPE program. These 63 calves have already had a large impact on the breed differences updated yearly as part of the across-breed EPD adjustment factor program.

As we continue to make these matings, we are hoping to sample an additional 2 or 3 bulls this year to keep our sample of South Devon bulls current and relevant to the breed. We are currently in discussions with the association to obtain a list of the most heavily used bulls from the last four years in order to select these additional bulls that we'll sample. Please feel free to contact us with any questions. We appreciate your willingness to participate in the GPE program and your help in obtaining sires that are representative of the breed.

Larry Kuehn, Mark Thallman, and Warren Snelling
U.S. Meat Animal Research Center



A group of cows, with some South Devon-influenced breeding at MARC.



World South Devon Society Council members from L to R: John Miller, South Africa; Margaret Northey, United Kingdom; Brian Thomson, New Zealand, Daphne Lines, Australia, David Corker, Australia and Larry Kuehn, MARC; Mark Thallman, MARC and Chad Engle, Cattle Operations Manager at MARC.



Jim Brown, MJB Ranch, Lodge Grass, MT talks with Larry Kuehn and Mark Thallman, geneticists at the US Meat Animal Research Center (MARC), in Clay Center, NE about the South Devon cycle during the World South Devon Tour stop.



Geneticist Larry Kuehn talks with World South Devon Tour participants about the research cycle and the use of South Devon cattle in the cycle.



Mark Thallman, discusses the feed efficiency testing procedures with Neil Hagger, Australia during the World South Devon Tour.



World South Devon Tour participants at the US Meat Animal Research Center representing Australia, New Zealand, South Africa, United Kingdom and the US.



DLCC Ranch...Providing

Annual Private Treaty Sale

April 25, 2015 • At the Ranch • 30 Bulls & 20 Females



2015 National Champion Bull DLCC Two Step 84B
Sire: DLCC Shur Loc 99W • Dam: DLCC Dancer 141T
BW: 3.3 WW: +81 YW: +126 Milk: +29
Selling semen shares.



Like his sire, Two Step combines balanced traits with superior performance.



Winning the Slap at 8 months of Age!
Youngest National Champion Ever.



DLCC Shur Loc 99W * Trait Leader
2X National Champion Bull
BW: 1.0 WW: +46 YW: +86
Milk: +32 Scrotal: +.6
Still working in the pasture.



DLCC Ribbons 69A
2015 Reserve National NWSS Junior Female
Sire: DLCC Shur Loc 99W
Halter broke in December ...
Champ in January!

Congratulations ...
Two Step Semen Share Owners
Majestic Meadows, New Friendship, MD
Showboat Cattle Co., Winchester, KS
Sadler Cattle Co., Anoka, MN
Popken South Devons, Swanville, MN

Key South Devon Genetics



DLCC Loop 19B
2015 Reserve National
Champion Female
Sire: MMM Untouchable W810
BW: 3.8 WW: +66 YW: +119 Milk: +28



DLCC Brooke 7B
Sire: DLCC Whiplash 1Y
BW: 1.6 WW: +55 YW: +96 Milk: +26
She Sells April 25th.



DLCC Bindi 71X
Sire: DLCC Sure Thing Too 119T
Her son sells April 25th.



DLCC Legend 18A
Reserve National Champion
Poundmaker Bull
Sire: DLCC Whiplash 1Y
BW: .4 WW: +45 YW: +79 Milk: +27
Thank you to MJB Ranch for purchasing 1/2
Interest and Full Possession



DLCC Punch 116Y
2014 'Junior Nationals' Champion
DLCC Jab 1B
Sire: LCOG Yosemite



DLCC Dodge City 78Y
Sire: SBCC Womanizer 9137
BW: 1.7 WW: +59 YW: +110 Milk: +25



DLCC Belmont 25B
Reserve National Champion Bull
Sire: DLCC Whiplash 1Y
BW: 1.7 WW: +64 YW: +105 Milk: +34
He Sells April 25!



DLCC Battlecry 27B
Sire: DLCC Patriot 51Y
BW: 1.5 WW: +51 YW: +92 Milk: +36
He Sells April 25!



DLCC Gemma 104W
BW: 1.8 WW: +41 YW: +83 Milk: +38
Granddam of 27B



Dar, Lynn,
Lane & Leah Giess
33424 183rd Street
Pierz, MN 56364
(320) 249-2130
darlynn@fallsnet.com

Congratulations to
Lane & Leah
NWSS Champ &
Reserve Senior
Showman





NASDJA NEWS

NORTH AMERICAN SOUTH DEVON JUNIOR ASSOC.

Boots, Buckles and Banners ...

SPECIAL NOTES:

- Congratulations to Wiley Fanta, Starbuck, Minnesota for winning the 2014 'Heartland Challenge' Award.
- Special thanks to the Iowa South Devon Association for all their hard work to make the 2014 'Junior Nationals' a huge success.
- Thanks to all the sponsors for their generous donations. Your support helps the junior association continue to grow.
- Thank you to Curtis Ohlde for all the wonderful photos he took during this year's event.

Boots, Buckles and Banners was the theme of the 2014 North American South Devon Junior Association's Junior National Show and Leadership Conference, held June 26-28, at the Poweshiek County Fairgrounds in Grinnell, Iowa.

Hosted by the Iowa South Devon Association, the schedule was filled with activities including a photo contest, speech contest, marketing competition, Quiz Bowl, Barnyard Olympics, Showmanship competition and the 'Junior Nationals' show. Juniors had the opportunity to show a steer, bull, heifer or cow/calf pair in the Poundmaker or Purebred division.

A Bred & Owned division was also held. Juniors in all four divisions, PeeWee, Junior, Intermediate and Senior were eligible to compete for the 'Heartland Challenge' award. This award combines the scores of the marketing, quiz bowl, photo, speech and showmanship competition. The 2014 winner of the Heartland Challenge was Wiley Fanta, Starbuck, MN.



2014 Grand Champion Purebred Female, TLC Jordie 3021A, a 5/3/13 daughter of TLC Deetz 90Z shown by Tayler Sammons, Pella, IA.



The 2014 Reserve Grand Champion Female honors went to WGF Jazmin, a 9/9/12 daughter of MVM G. Callen shown by Garrett Steinlicht, Valley Falls, KS.



2014 Heartland Challenge Winner, Wiley Fanta, Starbuck, MN and Curtis Ohlde., Easton, KS.

2014 'JUNIOR NATIONALS' PARTICIPANTS

The 2014 NASDJA 'Junior Nationals' were dedicated to the Giess family, Pierz, Minnesota. Dar, Lynn, Lane and Leah Giess were honored for their long-time dedication to the South Devon juniors and the NASDJA program.



2014 NASDJA 'Junior Nationals' Dedication . . . Pictured from left to right; Shawn Van Wyk, Jordan Vander Molen, Lane, Leah, Lynn and Dar Giess.



Heartland Challenge Division Winners: Wiley Fanta, Starbuck, MN (Junior and Overall); Chace Terry, Winchester, KS (PeeWee); Brandon Van Wyk, Grinnell, IA (Intermediate) and Lane Giess, Pierz, MN (Senior).

2014 SHOW CHAMPIONS



Champion Poundmaker Steer, JVM Anchorman 360A, a 3/20/13 son of Purple Haze shown by Bryce VanRyswyk, North Baxter, IA.



Champion Poundmaker Female, JVM Ariel 305A, a 5/7/13 daughter of Purple Haze, shown by Tayler Sammons, Pella, IA.



Reserve Champion Poundmaker Female, SBCC Ariel 3438, a 4/21/13 daughter of SBCC Winchester 9128, shown by Chace Terry, Winchester, KS.



Champion Poundmaker Cow/Calf Pair, DLCC Punch 116Y, a 1/1/11 daughter of MJB Shur Loc 106S & DLCC Jab 1B, a 3/1/14 daughter of LCOC Yosemite X730Y, shown by Lane Giess, Pierz, MN.

2014 SHOW CHAMPIONS



Reserve Champion Poundmaker Cow/Calf Pair, DLCC Cocoa 46Z, a 4/8/12 daughter of DLCC Shur Loc 99W & RBG Banner Bandit 401B, a 4/7/14 son of LCOC Yosemite X730Y, shown by Wiley Fanta, Starbuck, MN.



Champion Purebred Steer, SBCC Steer 3103, a 2/28/13 son of SBCC Yofenite 1147, shown by McKayla Boyce, Valley Falls, KS.



Reserve Champion Purebred Steer, SBCC Steer 3105, a 3/2/13 son of SBCC Royal Tribute 7125, shown by Taygen Boyce, Valley Falls, KS.



Champion Purebred Cow/Calf Pair, SBCC Zero'd in Gwen 2153, a 5/24/12 daughter of SBCC Winchester 9128 & SBCC Boom 4133, a 4/24/14 son of RP Young Gun 63Y, shown by Lauren Terry, Winchester, KS.

2014 SHOW CHAMPIONS



Reserve Champion Purebred Cow/Calf Pair, DLCC Reflection 14U, a 2/14/08 daughter of DLCC Landmark 15R & Hillcrest Brandy 421B, a 3/28/14 daughter of TLC Deetz 901Z shown by Brandon Van Wyk, Grinnell.



Reserve Senior Champion Female, WGF Echo, a 1/11/12 daughter of MVM G. Callen, shown by Bailey Langley, Atchison, KS.



Champion Bred and Owned Bull, WGF Acer, a 10/25/13 son of MVM Yukon, shown by Garrett Steinlicht, Valley Falls, KS.



Reserve Champion Bred and Owned Bull, WGF Beau, a 1/11/13 son of MVM Yukon, shown by Ciera Steinlicht, Valley Falls, KS.

Winners ... Showmanship & Ag Olympics



Champion PeeWee Showman: Taygen Boyce, Valley Falls, KS. Reserve Showman: Blake Van Wyk, Grinnell, IA.



Champion Junior Showman: Wiley Fanta, Starbuck, MN. Reserve Showman: Logan Ohlde, Winchester, KS.



Champion Intermediate Showman: Brandon Van Wyk, Grinnell, IA. Reserve Showman: Garrett Steinlicht, Valley Falls, KS.



Champion Senior Showman: Tayler Sammons, Pella, IA. Reserve Showman: Lane Giess, Pierz, MN.



PeeWee Ag Olympic Champions: Cierra Steinlicht, Valley Falls, KS and Blake Van Wyk, Grinnell, IA.



Junior Ag Olympic Champions, Jamie & Julia Lyons, New Auburn, WI.

Quiz Bowl, Marketing, Speech, Photography



Intermediate Ag Olympics Champions: Payton Van Wyk, Grinnell, IA and Jesse Saland, Deep River, IA.



Senior Ag Olympics Champions: Blake McClenathan, Brooklyn, IA and Cole Olson, Brooklyn, IA.



Top Photographers: Hanna Saland, Deep River, IA (Junior Cattle); Jaelynn Smith, Sully, IA (PeeWee); Alyssa James, Brooklyn, IA (Senior) Wylie Fanta, Starbuck, MN. (Junior) & Overall Rosette.



Champion Quiz Bowl: Lane Giess, Pierz, MN (Senior); Lauren Terry, Winchester, KS (Junior); Chace Terry, Winchester, KS (PeeWee); Nathan Hall, Brooklyn, IA (Intermediate).

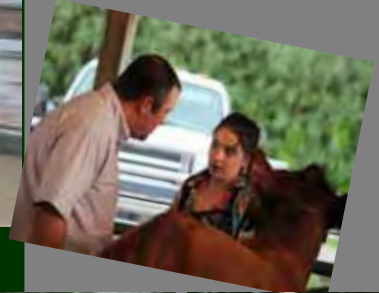
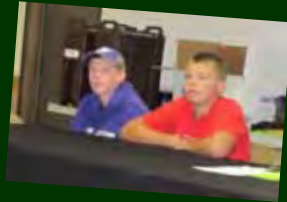


Champion Marketers: Mitchell Sims, Hutchinson, MN (Senior); Wiley Fanta, Starbuck, MN (Junior); Ciera Steinlicht, Valley Falls, KS (PeeWee); Brandon Van Wyk, Grinnell, IA (Intermediate).



Top Speakers: Kyle Stranberg, Maynard, MN (Intermediate); Lauren Terry, Winchester, KS (Junior); Chace Terry, Winchester, KS (PeeWee); Lane Giess, Pierz, MN (Senior).

2014 'Junior Nationals' Snapshots



People & Places



Alabama cattlemen participate in a judging competition at the DarLynn Cattle Company (DLCC) during a Minnesota cattle tour in June.



Don and Emilee White, junior youth ambassador help out during the Alabama Cattlemen Tour stop at the DLCC Ranch.



NASDA President, Dar Giess meets with the Peterson Brothers.



Joel Popken, Popken South Devon gets ready to hand off the 2014 Minnesota Youth Beef Experience Heifer to Abby Penzenstadler, Chisago City, MN during the Minnesota Beef Expo.



NASDJA Board Members, Graham Leachman, Ft. Collins, CO, Jenna White, Wadena, MN and Leah Giess, Pierz, MN tour Purina during the Youth Beef Industry Congress in St. Louis, MO.



Shannon Rankin, the World South Devon Tour bus driver and NASDA President Dar Giess meet up during the Angus convention.



South Devon juniors line-up for the show at the 2014 Minnesota Beef Expo, St. Paul, MN.



Leah Giess, Pierz, MN gets ready to enter the ring for the championship drive at the 2014 Minnesota State Fair.



Emilee & Jenna White, Jr. & Sr. NASDA Youth Ambassadors.



Lane Giess, Pierz, MN gives reasons during the judging competition for the Alabama Cattlemen's Tour Group.



Emilee White, Wadena, MN shows her South Devon heifer at the Minnesota 4-H South Devon Show.



Alabama Cattlemen Tour participants pictured in front of the DLCC bunkhouse.



Savvy Weimer, shows her youth experience heifer during the 2015 National Show in Denver.



Sale Results

Elkington Polled Herefords and South Devon's

On a beautiful sunny day (a record setting day 60 degrees), the Elkington's had their 35th annual production sale. The cattle were in shape to sell and the buyers were ready to take them home. There was a strong crowd with active bidding throughout the offering



77 Hereford Bulls \$4,000
16 South Devons \$4,000
17 Polled Hereford bred Heifers \$3,050
3 South Devon bred heifers \$ 3,166

Top sellers

Lot 614A EPHR HOT POINT 614A \$10,000

{DLF,HYF,IEF} (P43388993)

A Feb 14, 2013 son of KJ BJ 473T REVENGE 064W.

A heifer bull with great epds.

To Brian Simon of Gettysburg, S.D.

Lot 632A LE FOR RUNNER 632A \$7,000

{DLF,HYF,IEF} (P43389002)

A March 2 2013 Son of KJ REDEEM 492Y

A big long bull with exceptional class and style.

To Rodger Neilson Gooding, ID

Lot 807A EPHR SAND RAIL 807A \$7,000

(P43388929)

A April 30th son of KJ REDEEM 492Y

A performance bull with great depth and class

To Breckenridge Bros Tetonia, ID



Lot 648A EPHR REEDEM 492Y 648A \$6,000

(P43388903)

A March 6th 2013 son of KJ REDEEM 492Y

A meaty bull with style and class

To Strand Ranch Geyser, MT

Lot 619A EPHR DOMMINO 732T 619A \$6,000

(P43393185)

A Feb 28th 2013 son of CL 1 DOMINO 732T

To Dax Vanordon Snake River, ID

South Devon Bulls

Lot 642A EBS ELKER 1121 \$7500

A March 3rd son of DLC LEGACY 1121

A thick red Bull with tons of style

To Slash D Ranch Howe ID

Lot 610A EBS Elker 1121 610A \$5,000

A Feb 27th 2013 son of DLC LEGACY 1121

To Jonny Bevan Tetoia ID

Lot 799A EBS Elker 1121 799A \$4900

A May 1st 2013 Black son of DLC LEGACY 1121

To Mike Ward Idaho Falls ID

Hereford Heifers

Lot 622A EPHR MISS MANDY 622A \$3,600

(P43393173)

A March 1st Daughter of TH 122 711 VICTOR 719T

To Lacy Elkington Idaho Falls ID

Lot 644A EBE LINDSEY 644A \$3,500

(P43388865)

A March 5th 2013 Daughter of EPHR SECURITY 189X

To Sipriano Ledezma Denver CO

2014 SOUTH DEVON HALLMARK DAMS

The North American South Devon Association in continuing efforts to stress performance and productivity, recognizes the superior females of the breed, the Hallmark Dams. To identify these cows, emphasis was placed on early puberty, breeding, early calving and superior production over time. A Hallmark Dam is the standard by which all South Devon cows can be judged.

Hallmark Dams Criteria

1. Dams must have weaned a calf born since January 1, 2013.
2. Dams must be at least 50 percent South Devon and have had a minimum of three calves.
3. The maximum age for a dam to have had her first calf is 30 months of age.
4. A maximum calving interval of 395 days.
5. Every calf produced must have weaning records submitted.
6. A progeny average 205-day adjusted weaning weight ratio of at least 105.

The following list recognizes 113 South Devon cows bred and owned by 24 South Devon breeders. The first table lists each individual Hallmark Dam and her current owner. The next table shows the 73 sires of these distinguished dams, while the last table lists all breeders of these Hallmark Dams. Once a dam reaches this status she will continue to be recorded in the database as a Hallmark Dam.

2014 HALLMARK DAM SUMMARY - DAM LISTING

Owner Dam's Name	No. Calves	Avg. 205-Ratio	Calving Interval	Owner Dam's Name	No. Calves	Avg. 205-Ratio	Calving Interval
BAR/E CATTLE CO, CLINTON, NC				DLC MS SURE ENUF 817U (Purebred)	5	109	373
BAR/E U814 (Purebred)	4	105	369	DLC ROCKETTE 701 (Purebred)	6	110	371
BAR/E U821 (7/8 Blood)	4	108	380	DLC MISS ROYAL 616 (Purebred)	7	107	365
BIG COUNTRY BEEF GENETICS, COLUMBUS, MT				DLC MS BLACK ROYAL 630 (Purebred)	7	107	367
BC JULIET 0615X (Fullblood)	3	106	386	DLC MISS ROYAL 515 (Purebred)	8	110	369
BC SAMMY 8560U (1/2 Blood)	5	106	374	DARLYNN CATTLE COMPANY, PIERZ, MN			
BC SHERIDAN 6870S (Fullblood)	6	107	363	DLCC CICI 46U (Purebred)	5	106	368
BOLLENBACH CATTLE COMPANY, KINGFISHER, OK				DLCC HARMONY 59T (Fullblood)	6	113	374
CIMARRON BLOSSOM 992W (Fullblood)	3	107	362	DLCC TAMI 29T (Fullblood)	6	106	362
CIMARRON EBONY 970W (Fullblood)	3	106	358	MJB PENNY 4613P (Fullblood)	8	109	371
CIMARRON GYPSY 938W (Purebred)	3	106	368	MJB PERSIMMON 4589P (7/8 Blood)	9	108	362
CIMARRON GYPSY 955W (Purebred)	3	107	370	DIAMOND PLUS CATTLE, GACKLE, ND			
CIMARRON RUBY 976W (Fullblood)	3	107	372	COTEAU DREAM LADY 264 (7/8 Blood)	3	109	394
CIMARRON RUBY 984W (Fullblood)	3	110	368	COTEAU DREAM LADY 720 (Fullblood)	3	111	369
CIMARRON LOLITA 748T (Fullblood)	5	107	364	COTEAU DREAM LADY 955 (3/4 Blood)	3	117	381
CIMARRON SAVANAH 739T (Fullblood)	5	108	370	COTEAU SKYLINE U400 (Fullblood)	4	109	371
CIMARRON MAIDEN 686S (Fullblood)	6	113	363	COTEAU SKYLINE U612 (Purebred)	4	111	375
CIMARRON SAVANAH 572R (Fullblood)	7	105	365	COTEAU LADY FIREFLY 17J (Fullblood)	5	106	369
CIMARRON BELLE 4105P (Fullblood)	8	109	364	COTEAU SUNRISE 20 (Fullblood)	7	108	369
CIMARRON CUPCAKE 424P (Fullblood)	8	106	370	COTEAU NITRO LADY 20 (3/4 Blood)	9	113	367
CIMARRON ECSTACY 284M (Fullblood)	10	111	365	COTEAU NITRO LADY 50 (3/4 Blood)	10	107	330
LANCE A BRANTNER, ELLSWORTH, WI				ELKINGTON BROS & SONS, IDAHO FALLS, ID			
LAB SIERRA ROSE 22W (Purebred)	3	106	388	EBS MARTHA 803W (Fullblood)	4	110	368
HENDRIKUS AND OR DAWN BRUINS, ELK POINT ALBERTA CANADA				EBS MISS LUCY 702U (Fullblood)	5	109	361
MISS RUBY MCGREGOR 620S (3/4 Blood)	6	107	302	FARNELL CATTLE COMPANY, JACKSONVILLE, TX			
BILLIE G CULP, NEOSHO, MO				CIMARRON RUBY 914W (Fullblood)	4	109	363
BGC F9X (Fullblood)	3	106	375	FOUR J RANCH, BRIDGER, MT			
BGC H24X (1/2 Blood)	3	106	363	FJ JUDY 803U (3/4 Blood)	4	106	368
BGC H18W (1/2 Blood)	4	109	373	FJ TOP GIRL 703T (Fullblood)	5	107	368
BGC H1W (1/2 Blood)	4	105	374	FJ SANDY 616S (7/8 Blood)	6	110	364
BGC H20W (1/2 Blood)	4	106	370	FJ RHONDA 511R (Fullblood)	7	113	365
BGC H35U (1/2 Blood)	4	108	370	LANE GIESS, PIERZ, MN			
BGC T26U (3/4 Blood)	4	106	368	DLCC GEMMA 104W (Purebred)	3	106	355
DAHL LAND & CATTLE CO, GACKLE, ND				DLCC PRECIOUS 113M (7/8 Blood)	11	106	363
DLC MISS LEGACY 020 (Fullblood)	3	109	378	DLCC CLAIRE 12L (7/8 Blood)	13	110	370
DLC MS BLACK LEGACY 028 (Fullblood)	3	107	381	LEAH GIESS, PIERZ, MN			
DLC MS LEGACY 008X (Purebred)	3	110	382	DLCC BISCUIT 104X (7/8 Blood)	3	105	375
DLC MS LEGACY 026 (Fullblood)	3	105	379	DLCC MANDI 2X (Purebred)	3	118	361
DLC MISS LEGACY 926W (Fullblood)	4	115	373	DLCC MANDI 55U (Fullblood)	5	111	350
DLC MISS ROYAL 905W (Purebred)	4	110	381	DLCC PRINCESS MIA 78P (3/4 Blood)	7	112	372
MJB ROCKETTE 9594W (Purebred)	4	118	384	JVM CATTLE COMPANY, PELLA, IA			
DLC MS ROYAL LAD 830U (Fullblood)	5	105	372	HS PARTY PEEK-A-BOO 15X (3/4 Blood)	3	110	356

2014 SOUTH DEVON HALLMARK DAMS

Owner Dam's Name	No. Calves	Avg. 205-Ratio	Calving Interval
MVM XANDRA 001X (Fullblood)	3	108	361
MVM XANDRA 007X (1/2 Blood)	3	105	382
KNN FARMS, BAY CITY, WI			
KNN 12W (Fullblood)	4	110	380
SAMPSON MCGREGOR STOCK FARM, IRON RIVER AB CANADA			
MISS MCGREGOR 776T (Fullblood)	6	109	365
MISS RUBY MCGREGOR 713T (Purebred)	6	106	368
MISS MCGREGOR 655S (Fullblood)	7	106	368
MISS MCGREGOR 464P (Fullblood)	9	107	366
MJB RANCH, LODGE GRASS, MT			
MJB PERFECT 0582X (3/4 Blood)	3	105	342
MJB RPUA (3/4 Blood)	3	106	378
MJB SARAH 9592W (Purebred)	3	107	390
MJB ULTRA 9545W (7/8 Blood)	3	112	383
MJB ULTRAVIOLET 8723U (3/4 Blood)	3	113	387
MJB XTRA 0505X (1/2 Blood)	3	107	393
MJB MONARCH 8804U (Fullblood)	4	105	393
MJB SARAH 8727U (Fullblood)	4	107	370
MJB SARAH 9573W (Fullblood)	4	110	386
MJB SARH 9609W (Purebred)	4	108	387
MJB NIKKI 8613U (Fullblood)	6	113	377
MJB NIKKI 3641N (3/4 Blood)	9	107	387
MJB MADDIE 2525M (7/8 Blood)	11	105	374
MJB ULTIMATE 1594L (3/4 Blood)	12	109	368
MJB CINNAMON 0579K (3/4 Blood)	13	110	337
JOEL POPKEN, SWANVILLE, MN			
JP 01K (1/2 Blood)	12	105	393

Owner Dam's Name	No. Calves	Avg. 205-Ratio	Calving Interval
R P FARMS, SWANVILLE, MN			
RP WINCHESTER 95W (Fullblood)	4	107	371
RP UNITY 00U (Purebred)	5	113	377
RP URANIUM 91U (Purebred)	5	105	370
RP PASSION 73P (Purebred)	9	109	365
SHOWBOAT CATTLE CO, WINCHESTER, KS			
SBCC CR XHILARATING 0114 (Purebred)	3	109	377
SBCC CR XQUISITE 0118 (Purebred)	3	109	384
SBCC SHE WOLF 9121 (Purebred)	4	117	364
SBCC ROYAL UTOPIA 8115 (Purebred)	5	108	371
SBCC ULTRA HOT 8161 (Purebred)	5	112	367
DLC ROCKETT 606 (Purebred)	7	109	367
HB ROCKY MTN ROCKETTE (7/8 Blood)	8	108	367
SBCC NATURAL KELLY 3250 (7/8 Blood)	10	105	369
LCC DEVONAIRE MRO35 (Fullblood)	11	107	365
DLCC SWEET CAROLINA 189K (Fullblood)	13	106	369
SARAH SPINELLI, BRIDGER, MT			
RP PRIZE 59P (Fullblood)	8	105	366
TRIPLE CROWN SOUTH DEVON FARM, RUSSELLVILLE, MO			
TC WENDY (Fullblood)	4	107	365
TC WHISPER (Fullblood)	4	110	371
TC UDDERLY PERFECT (Fullblood)	5	110	361
TC UNITY (Fullblood)	5	113	366
TC NANCY (Fullblood)	11	108	365
X-E STOCK RANCH, MOSES LAKE, WA			
XE MISS RIDER T767 (Purebred)	6	107	355

SIRE LISTING

Sire's Name	Reg. Number	Percentage	No. Dams	Sire's Name	Reg. Number	Percentage	No. Dams	Sire's Name	Reg. Number	Percentage	No. Dams
DLC LEGACY 55	PBM190782	(Purebred)	5	NICHOLS P808	PBM184707	(Purebred)	2	DLC THE ROCK 52	M190752	(Fullblood)	1
HILLTOP ACRES KING	M185837	(Fullblood)	5	SBCC CROWN ROYAL 6226	RM188321	(7/8 Blood)	2	DLCC CENTRAL TIME 41S	RM188850	(3/4 Blood)	1
DLCC STAMINA 138R	M188913	(Fullblood)	4	X-E ROCK P296	PBM181098	(Purebred)	2	DLCC SURE THING 34P	RM181632	(7/8 Blood)	1
CIMARRON MAVERICK 549R	M186710	(Fullblood)	3	BC PROGRESS 315U	M194458	(Fullblood)	1	DLCC SURE THING TOO 119T	RM192106	(7/8 Blood)	1
DLC ROYAL LAD 21	M175085	(Fullblood)	3	BLACK ROCK	RM162478	(3/4 Blood)	1	EBS RANCHER 762N	M180561	(Fullblood)	1
DLCC SURE-ENUF	M174528	(Fullblood)	3	CIMARRON BIG SHOT 436P	M183087	(Fullblood)	1	FJ MR BRIDGER 229M	PBM175482	(Purebred)	1
HB PRIDE OF THE ROCKIES	RM179887	(7/8 Blood)	3	CIMARRON CASSANOVA 235M	M176285	(Fullblood)	1	HS PRETTY PARTY BOY 110U	RM193564	(3/4 Blood)	1
CIMARRON BONANZA 139L	M173454	(Fullblood)	2	CIMARRON HUSTLER 810H	M161393	(Fullblood)	1	KNN RANGER 37T	PBM193165	(Purebred)	1
CIMARRON DYNAMO 812H	M161435	(Fullblood)	2	CIMARRON LUCKY 13K	M169007	(Fullblood)	1	LEACHMAN ATOMIC 9360F	M132231	(Fullblood)	1
CIMARRON MIDNIGHT 098K	M172143	(Fullblood)	2	CIMARRON MAVERICK 562R	M186612	(Fullblood)	1	MID PERFORMER 472	RM190585	(7/8 Blood)	1
CIMARRON SUPERIOR 219	M119255	(Fullblood)	2	CIMARRON REBEL 707T	PBM192315	(Purebred)	1	MJB LONE MOUNTAIN 5528L	M171226	(Fullblood)	1
CIMARRON UTMOST 65	PBM115768	(Purebred)	2	CIMARRON REBEL 738T	PBM192356	(Purebred)	1	MJB ROMEO 125R	PBM185558	(Purebred)	1
DLC G93	PBM134015	(Purebred)	2	CIMARRON REDROCK 478	M127057	(Fullblood)	1	MJB SHUR LOC 106S	M188977	(Fullblood)	1
DLC IMPACT LAD 10N	M177997	(Fullblood)	2	CIMARRON TRADITION 015K	M169034	(Fullblood)	1	MR SAMPSON 262M	M174863	(Fullblood)	1
DLC MR ROYAL 115	M171699	(Fullblood)	2	CIMARRON TRIUMPH 705T	M192390	(Fullblood)	1	MR SAMPSON 903J	M163759	(Fullblood)	1
DLCC ASTOUND 75F	PBM131728	(Purebred)	2	CIMARRON ULTIMATE 561E	M129995	(Fullblood)	1	NORTH PADDLE LEGACY 32L	M175145	(Fullblood)	1
DLCC BLACK ENUF 127J	PBM169690	(Purebred)	2	CIMARRON VIGILANTE 149L	M173324	(Fullblood)	1	NORTH PADDLE REBEL 1R	RM192140	(7/8 Blood)	1
DLCC LANDSLIDE 79P	RM181621	(7/8 Blood)	2	CIMARRON VIGILANTE 364N	M179181	(Fullblood)	1	PRAIRIE FIELDMASTER	PBM130706	(Purebred)	1
DLCC OO LALA 62L	PBM173690	(Purebred)	2	CONNELLY FRONTLINE 736	RM161614	(7/8 Blood)	1	PRAIRIE GRANITE 112G	M134863	(Fullblood)	1
DLCC OPEN RANGE 3R	RM186509	(7/8 Blood)	2	DISL-DO MOSES	M164424	(Fullblood)	1	RP SHOWDOWN 25S	M188380	(Fullblood)	1
DLCC PIKACHU 33P	PBM181063	(Purebred)	2	DLC BOLERO 57	RM190779	(7/8 Blood)	1	SBCC RIDER'S DREAM 312S	PBM178613	(Purebred)	1
DLCC POLLED PRO 111H	M166186	(Fullblood)	2	DLC MR ROYAL 40	M175030	(Fullblood)	1	SMS MR POLARIS SAMPSON 274M	M174825	(Fullblood)	1
HILLTOP ACRES BLACK JACK	M185849	(Fullblood)	2	DLC MR ROYAL DUKE 40	PBM190325	(Purebred)	1	TC TITUS	M191949	(Fullblood)	1
MJB ROUNDUP 208R	RM185650	(7/8 Blood)	2	DLC ROCK 46	PBM190257	(Purebred)	1				
MVM SARGENT 654S	PBM190721	(Purebred)	2	DLC ROYAL LAD 172	M186009	(Fullblood)	1				

BREEDER LISTING

MJB RANCH, LODGE GRASS, MT	18	R P FARMS, SWANVILLE, MN	5	LANCE A BRANTNER, ELLSWORTH, WI	1
BOLLENBACH CATTLE COMPANY, KINGFISHER, OK	14	TRIPLE CROWN SOUTH DEVON FARM, RUSSELLVILLE, MO	5	BURGESS RANCHES, ECKERT, CO	1
DAHL LAND & CATTLE CO, GACKLE, ND	13	FOUR J RANCH, BRIDGER, MT	4	LANE GIESS, PIERZ, MN	1
DIAMOND PLUS CATTLE, GACKLE, ND	9	BIG COUNTRY BEEF GENETICS, COLUMBUS, MT	3	KNN FARMS, BAY CITY, WI	1
BILLIE G CULP, NEOSHO, MO	7	LEAH GIESS, PIERZ, MN	3	LEACHMAN CATTLE CO, BILLINGS, MT	1
DARLYNN CATTLE COMPANY, PIERZ, MN	7	BAR/E CATTLE CO, CLINTON, NC	2	JOEL POPKEN, SWANVILLE, MN	1
SHOWBOAT CATTLE CO, WINCHESTER, KS	6	ELKINGTON BROS & SONS, IDAHO FALLS, ID	2	THREE CEDARS FARM, DENMARK, TN	1
SAMPSON MCGREGOR STOCK FARM, IRON RIVER AB CANADA	5	MAR-BET FARM, PELLA, IA	2	X-E STOCK RANCH, MOSES LAKE, WA	1

2015 SOUTH DEVON NATIONAL CATTLE EVALUATION

ANALYSIS DESCRIPTION

Agricultural Business Research Institute • University of New England, Australia

Welcome to the 2015 South Devon Sire Summary. This brings you the most current EPDs available on sires within the breed analyzed by the Agricultural Business Research Institute. This analysis features a new crossbred analysis which now accounts for hybrid vigor and heterosis differences. This allows for all animals to be compared regardless of their percentage South Devon. These changes have resulted in larger more meaningful contemporary groups.

Summary

The North American South Devon Association in coordination with ABRI and AGBU have utilized the full crossbred analysis structure in 2010 to better account for other breed animals being used in seedstock producers' breeding programs to allow for the genetic component to be more accurately reflected in animals' Expected Progeny Differences. The analysis has resulted in a very good correlation to the previous analysis for the growth traits of BW, WW and YW as well as SC and Milk. The largest differences were seen in the non-parent animals as would be expected as before these animals had no progeny in contemporary groups that were contributing to the EPDs derived from the analysis and these animals now have progeny that are now included in meaningful contemporary groups. Additionally, new non-South Devon animals that previously had no data in the analysis are included in the analysis. As these animals

increase the number of progeny in meaningful contemporary groups, one can expect their EPDs to more accurately reflect their true genetic merit and their accuracy values will increase correspondingly. As stated in the 2009 description, the portion of growth in the crossbred due to heterosis was not being accurately accounted for and was instead being considered as genetics for the non-South Devon animal. Therefore, in some cases, the actual genetic component for these non-South Devon animals is less and their resulting EPD for growth and milk is lower as would be expected. This results in EPDs that are more reliable and a better indicator of an animal's true genetic merit.

Conclusion

This analysis of the South Devon breed was run using the latest version of the BREEDPLAN software. This software is a significant advance in the analytical techniques for genetic evaluation of livestock. The inclusion of techniques for evaluating other breed genetic contributions and the effects of heterosis, result in the 2015 North American South Devon Association analysis to be considered the most accurate and complete analysis undertaken to date. The results of this analysis are not comparable to previous methods due to the changes in formulation and comparisons should not be made on an individual animal's EPDs from the previous analysis.

ACC - ACCURACY

Accuracy (ACC) is an expression of reliability of the EPD and may range from 0 to 1. As accuracy approaches 1.0, the EPD is more reliable and can be expected to change less in the future as more progeny data are accumulated. By reliability, we mean how certain we are that the EPD represents the true genetic merit it estimates.

Accuracy may be categorized into low, medium and high reliability as follows. Low: 0.0 to .40; Medium: .40 to .70; High: .70 to 1.0. Sires with desired EPD values and high accuracy can be used with confidence that they will favorably contribute to herd improvement. Sires with low accuracy can be considered good prospects but might be used on a limited basis to minimize risk. Low accuracy values represent situations where calculated EPDs rely heavily on the records of related individuals since few or no progeny records are available. These EPDs are our best estimate of the sires potential at the time; but are associated with a greater degree of uncertainty.

Accuracy	Birth (lb)	Weaning (lb)	Yearling (lb)	Milk (lb)	Scrotal (cm)	CarcWt (lb)	Rib fat (inch)	REA (inch ²)	MARB (score)
0.00	2.7	17.0	27.3	10.7	0.65	17.57	0.030	0.26	0.15
0.05	2.6	16.1	26.0	10.1	0.62	16.69	0.029	0.24	0.14
0.10	2.5	15.3	24.6	9.6	0.59	15.81	0.027	0.23	0.13
0.15	2.3	14.4	23.2	9.1	0.55	14.94	0.026	0.22	0.13
0.20	2.2	13.6	21.9	8.5	0.52	14.06	0.024	0.21	0.12
0.25	2.1	12.7	20.5	8.0	0.49	13.18	0.023	0.19	0.11
0.30	1.9	11.9	19.1	7.5	0.46	12.30	0.021	0.18	0.10
0.35	1.8	11.0	17.8	6.9	0.42	11.42	0.020	0.17	0.10
0.40	1.6	10.2	16.4	6.4	0.39	10.54	0.018	0.15	0.09
0.45	1.5	9.3	15.0	5.9	0.36	9.66	0.017	0.14	0.08
0.50	1.4	8.5	13.7	5.3	0.33	8.79	0.015	0.13	0.07
0.55	1.2	7.6	12.3	4.8	0.29	7.91	0.014	0.12	0.07
0.60	1.1	6.8	10.9	4.3	0.26	7.03	0.012	0.10	0.06
0.65	1.0	5.9	9.6	3.7	0.23	6.15	0.011	0.09	0.05
0.70	0.8	5.1	8.2	3.2	0.20	5.27	0.009	0.08	0.04
0.75	0.7	4.2	6.8	2.7	0.16	4.39	0.008	0.06	0.04
0.80	0.5	3.4	5.5	2.1	0.13	3.51	0.006	0.05	0.03
0.85	0.4	2.5	4.1	1.6	0.10	2.64	0.005	0.04	0.02
0.90	0.3	1.7	2.7	1.1	0.06	1.76	0.003	0.03	0.01
0.95	0.1	0.8	1.4	0.5	0.03	0.88	0.002	0.01	0.01
1.00	0.0	0.0	0.0	0.0	0.00	0.00	0.000	0.00	0.00

EPD - EXPECTED PROGENY DIFFERENCE

Expected Progeny Differences (EPDs) may be used to estimate how future progeny of the animal will compare to progeny of other animals within the breed. To effectively use the Sire Summary, consideration must also be given to specific goals, management and environmental conditions, present level of production, herd strengths and deficiencies, and other economically important traits such as soundness.

EPDs are reported in +/- pounds for the different growth traits and are computed from a genetic evaluation system, which combines performance information currently available on the sire, his progeny, and related individuals into one value which estimates genetic transmitting ability. The analysis of the data considers and adjusts for the level of competition within a herd, genetic trend within the breed, and genetic

merit of the mates, thus making EPDs on across-the-breed evaluation allowing comparison of sires produced and utilized in different herds in different years on an equal basis.

EPDs in the South Devon Sire Summary are breed specific and cannot be compared directly to EPDs of cattle in other breeds. The genetic reference points are not the same for different breeds and therefore a +10 lb. Weaning EPD in one breed does not have the same meaning in any other breed. The summary is designed to help identify differences within the breed; information from designed breed evaluation studies is available for making breed comparisons. There are conversion tables that allow EPDs to be compared across breeds, however the accuracy of those tables has not been verified.

CONTEMPORARY GROUP DEFINITIONS

All EPDs are based on comparisons of calves within the same contemporary group. Most inaccuracies in EPDs are associated with incorrect reporting of contemporary group information. Submitting accurate performance information on all animals is a necessity in any genetic evaluation program. An animal's performance record needs to be included with it's peers to accurately contribute to it's EPDs. Likewise, contemporary groups with no variation (ie, all Docility scores 1) provide no value to the analysis either.

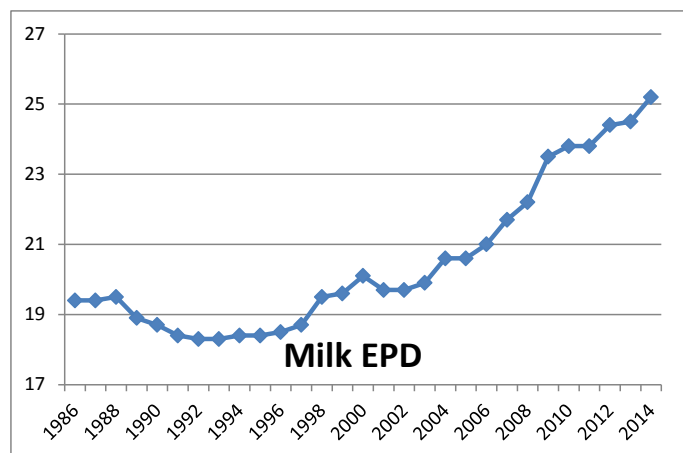
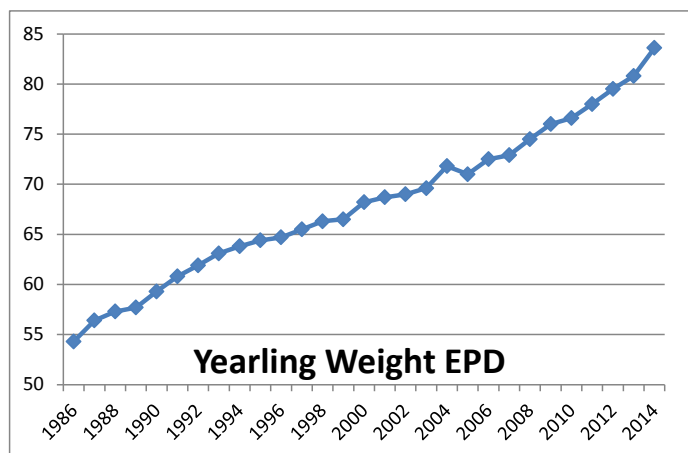
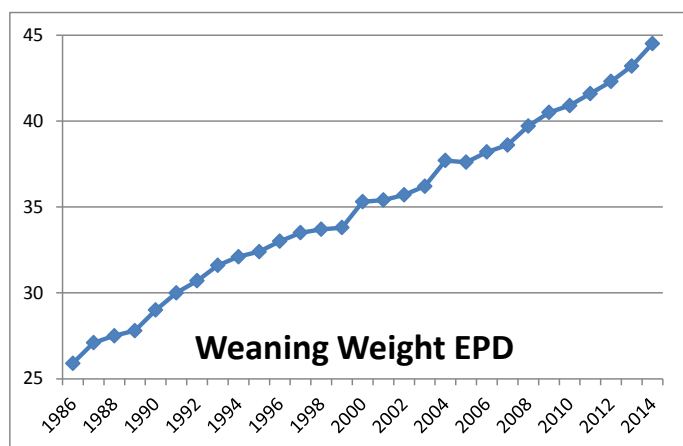
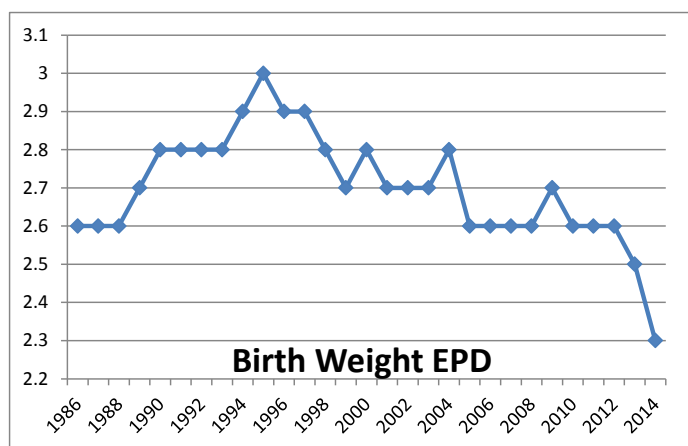
Contemporary Groups consist of animals of the:

- I. same sex
- II. born in the same herd and season (within 60 days)
- III. managed together and treated alike
- IV. same weigh date

SOUTH DEVON GENETIC TREND

The following Genetic Trend table illustrates the genetic trends in the South Devon breed. All animals in the analysis were used to generate this information. The EPD changes in weaning

and yearling growth are quite substantial, while maternal milk and birth EPD changes are light.



CRITERIA FOR LISTING IN SIRE SUMMARY

Main List of Active Sires (136 Sires)

In order to appear in the main listing, a bull must be at least 87.5 percent South Devon. The main list includes sires that have been thoroughly sampled and evaluated in the current population. Sires must have a weaning accuracy of at least .45 and have had performance progeny born since January 1, 2012.

Genetic Indicator Supplement (29 Sires)

The genetic indicator supplement includes active sires born since January 1, 2008, having a weaning accuracy of at least .35 but did not meet the minimum accuracy of .45 to make the main list. The purpose of the genetic indicator supplement is to provide preliminary data on the most heavily used young sires.

EXAMPLE LISTING AND TRAIT DEFINITION

1. NAME	2. Herds	3. BW	4. WW	5. YW	6. MWW	7. Milk	8. SC	9. Marb	10. CW	11. Fat	12. REA	13. RY
Reg# DOB %	#DC	Acc	Acc	Acc	Acc	Acc	Acc	Acc	Acc	Acc	Acc	Acc
Color H/P/S	Sire					Dam						
Breeder		Owner(s)										
NASDA MR PERFORMER	1	0.5	39	75	41	21	0.0	0.4	45.6	0.46	-0.01	0.7
1234567 2/2/2000 FB	13	0.48	0.46	0.44		0.36	0.28	0.58	0.62	0.59	0.63	0.24
Red POLLED	S: NASDA MR SIRE					D: NASDA MRS DAM						
B: NASDA MEMBER	O: NASDA NEW MEMBER											

- Sire Information** – Sires are listed in alphabetical order according to their registered name followed by registration number. Also included are the bull's birthdate, breed percentage, recorded color, recorded horned-pollled-scurred condition; sire(S), dam(D), breeder (B), and current owner(s) (O).
- #Herds (Number of Herds)** – The number of herds in which progeny have been reported.
DC (Number of Daughters'Calves) – The number of daughters' calves reported with weaning weights contributing to the maternal milk EPD. Number of daughters should not be used in lieu of accuracy, but simply to further clarify Maternal Milk and Maternal Weaning Weight accuracy values.
- BW (Birth Weight)** – Progeny from the above sire can be expected to weigh 1.5 lbs. less at birth than progeny sired by a bull with an EPD of +2 (+0.5 minus 2 = 1.5 lbs.)
- WW (Weaning Weight)** – Calves sired by the above bull should have a 35 lb. advantage in 205-day adjusted weaning weight compared to calves sired by a bull with an EPD of +4. (39 minus 4 = 35)
- YW (Yearling Weight)** – His progeny should be 45 lbs. above the average of progeny of a bull with an EPD of 30 lbs. (75-30=45)
- MWW (Maternal Weaning Weight)** – weaning weights averaging 11 lbs. heavier than progeny of a bull's daughters with a MWW EPD of 20 lbs. (41-20=21 lbs.)
- MILK (Maternal Milk)** – 205-day weights averaging 11 lbs. more

- as a result of greater milk production than daughters of a bull with a maternal milk EPD of 10. (21-10=11lbs.)
- Scrotal Circumference (SC)** – Scrotal Circumference EPD evaluates the scrotal size of bulls in centimeters from yearling bull data. Scrotal circumference is a good indicator of puberty, fertility, semen quality and quantity. Increases in scrotal size will also result in decreased age of puberty in daughters and greater lifetime production. Positive values indicate larger scrotal circumference.
 - Marbling EPD (Marb)** — expressed as a fraction of the difference in USDA marbling score of a sire's progeny compared to progeny of other sires.
 - Carcass Weight EPD (CW)** — expressed in pounds is a predictor of the differences in hot carcass weight of a sire's progeny compared to progeny of other sires.
 - Fat Thickness EPD (Fat)** — expressed in inches, is a predictor of the differences in external fat thickness at the 12th rib (as measured between the 12th and 13th ribs) of a sire's progeny compared to progeny of other sires.
 - Ribeye Area EPD (REA)** — expressed in square inches, is a predictor of the difference in ribeye area of a sire's progeny compared to progeny of other sires.
 - Retail Yield % EPD (RY)** — estimates the genetic differences between animals in percentage retail beef yield for a standard carcass weight of 750 lb. Positive EPD values indicate a higher percentage retail yield at the same carcass weight.

HERITABILITY ESTIMATES

Heritability is the portion of the total variation in phenotype among animals that is due to genes that are passed on to offspring. Heritabilities range from 0 to 1. The estimates used are based upon data reported to NASDA. The heritability estimates used in the National Cattle Evaluation are as follows:

Trait	Heritability
Birth Weight	.35
Weaning Weight	.26
Yearling Weight	.31
Maternal Milk	.21
Scrotal Circumference	.42

CARCASS EPD ANALYSIS HERITABILITY ESTIMATES

Heritability is the portion of the total variation in phenotype among animals that is due to genes that are passed on to offspring. Heritabilities range from 0 to 1. The estimates used are based upon data reported to NASDA. The heritability estimates used in the National Cattle Evaluation are as follows:

TRAIT	HERITABILITY	TRAIT	HERITABILITY
Weaning Weight	0.33	Fat Thickness	0.36
Ribeye Area	0.35	Ultrasound Ribeye Area	0.41
Marbling	0.29	Ultrasound Intramuscular Fat	0.28
Carcass Weight	0.42	Ultrasound Back Fat	0.56

CARCASS EPD ANALYSIS

There is both ultra-sound scan data and actual slaughter data in the evaluation. Scan records are adjusted to a constant age of 365 days, whereas carcass (slaughter) weight is adjusted

to 450 days - all other slaughter traits are adjusted to a 750 lb constant carcass weight.

PERCENTILE CHARTS

On the following two pages are percentile breakdown tables. Information is given for all South Devon active sires, dams, non-parents and all calves born in 2013. These tables can be utilized to compare an individual to the total South Devon population. For example, you want to know how your sire, with a +93 Yearling EPD compares with other sires in

the South Devon breed. You will find from the Sire Percentile table that he is at the 5% level. There are 5% of the South Devon with a higher Yearling Weight EPD. In other words, he is higher than 95% of all South Devon sires. Similar comparisons can be made with dams or non-parents.

All Sires

The trait averages, ranges and percentiles are given on all sires to allow comparative evaluation on a bull of particular interest in relation to where the bull ranks in the population of South Devon bulls.

All Sires — EPD Means and Ranges											
	BW	WW	YW	MV	Milk	SC	MARB	FAT	CWT	REA	RBV
#	3470	3447	3400	3091	3159	2552	3115	3115	3115	3115	2158
Avg.	2.4	32.6	64.7	36.8	20.1	0.0	0.2	0.01	19.9	0.22	0.8
Low	-6.7	73.8	134.3	73.1	44.1	1.2	-1.7	-0.02	-12.2	-0.17	-0.5
High	10.1	-25.3	-15.5	0.0	-8.1	-1.0	3.6	0.06	54.6	0.68	1.8

All Sires — Percentile Breakdown											
	BW	WW	YW	MV	Milk	SC	MARB	FAT	CWT	REA	RBV
1%	-2.4	62.2	108.7	59.8	35.0	0.7					
2%	-1.6	58.6	103.2	56.8	33.1	0.6					
3%	-1.2	55.6	98.7	54.8	32.0	0.5					
4%	-0.9	54.1	96.2	53.5	31.1	0.5					
5%	-0.7	52.8	94.1	52.5	30.4	0.4	2.3	0.03	34	0.34	1.1
10%	-0.2	47.5	86.8	48.5	27.7	0.3	0.9	0.02	30.5	0.3	1
15%	0.2	44.3	82.2	45.8	25.9	0.2	0.5	0.01	28	0.28	1
20%	0.6	41.8	78.5	44.0	24.7	0.1	0.3	0	26.4	0.26	0.9
25%	0.9	39.9	75.1	42.4	23.7	0.1	0.2	-0.01	24.6	0.25	0.9
30%	1.1	37.9	72.2	40.8	22.9	0.0	0.1	-0.02	23.3	0.24	0.9
35%	1.5	36.0	69.6	39.7	22.1	0.0	0.1	0	22.2	0.23	0.9
40%	1.7	34.3	67.6	38.4	21.3	-0.1	0.1	0	21.1	0.22	0.8
45%	2.0	32.9	65.7	37.2	20.6	-0.1	0	0	20.1	0.21	0.8
50%	2.2	31.5	63.4	35.9	19.9	-0.2	0	0	19.3	0.2	0.8
55%	2.5	30.1	61.4	34.8	19.4	-0.2	0	0	18.5	0.19	0.8
60%	2.8	28.9	59.6	33.8	18.8	-0.3	0	0	17.5	0.18	0.8
65%	3.1	27.4	57.6	32.9	18.1	-0.3	-0.1	0	16.7	0.17	0.7
70%	3.4	26.2	55.6	32.0	17.3	-0.4	-0.1	0	15.8	0.16	0.7
75%	3.8	24.8	53.6	30.8	16.3	-0.4	-0.1	0	14.7	0.15	0.7
80%	4.1	23.4	51.2	29.6	15.3	-0.5	-0.1	0	13.6	0.14	0.7
85%	4.5	21.7	48.4	28.0	14.3	-0.5	-0.2	0	12	0.13	0.6
90%	5.1	19.6	44.5	26.3	12.7	-0.6	-0.2	0	10.2	0.12	0.6
95%	6.0	15.1	39.0	23.1	10.5	-0.6	-0.4	0	7.9	0.1	0.4
96%	6.2	14.2	37.6	22.5	9.7	-0.6					
97%	6.5	12.7	34.9	21.6	9.1	-0.6					
98%	6.9	11.0	31.9	20.6	8.0	-0.7					
99%	7.6	8.0	26.6	18.6	6.1	-0.7					

All Dams

EPDs of dams are generally based on fewer progeny records than sires and are associated with lower accuracy values. As prediction of genetic merit, they are useful for planning matings and evaluating the cowherd.

All Dams — EPD Means and Ranges						
	BW	WW	YW	MV	Milk	SC
#	25350	25239	25017	25305	25347	19819
Avg.	2.3	31.1	62.5	35.0	19.4	0.0
Low	-4.1	83.0	137.2	80.1	48.6	1.0
High	10.0	-5.2	0.0	-0.1	-7.8	-1.0

All Dams — EPD Means and Ranges						
	BW	WW	YW	MV	Milk	SC
1%	-1.3	59.3	103.9	59.1	34.2	0.6
2%	-0.9	55.7	98.9	56.0	32.4	0.5
3%	-0.7	53.4	95.7	54.0	31.2	0.4
4%	-0.5	51.9	93.1	52.5	30.2	0.4
5%	-0.4	50.7	91.3	51.3	29.5	0.3
10%	0.1	45.9	84.5	47.2	27.0	0.2
15%	0.5	42.8	79.9	44.5	25.4	0.1
20%	0.7	40.3	76.1	42.5	24.1	0.1
25%	0.9	38.1	73.0	40.8	23.1	0.0
30%	1.1	36.2	70.1	39.2	22.2	0.0
35%	1.3	34.4	67.5	37.8	21.4	-0.1
40%	1.6	32.7	65.2	36.5	20.6	-0.1
45%	1.8	31.2	63.0	35.3	19.9	-0.2
50%	2.1	29.7	60.9	34.2	19.2	-0.2
55%	2.3	28.4	58.9	33.0	18.5	-0.3
60%	2.6	27.1	57.0	32.0	17.8	-0.3
65%	2.8	26.0	55.1	30.9	17.2	-0.4
70%	3.1	24.8	53.1	29.9	16.4	-0.4
75%	3.4	23.5	51.2	28.8	15.6	-0.5
80%	3.8	22.1	49.0	27.5	14.7	-0.5
85%	4.2	20.4	46.4	26.0	13.6	-0.6
90%	4.7	18.3	43.0	24.2	12.2	-0.6
95%	5.5	15.2	37.8	21.4	10.0	-0.7
96%	5.7	14.3	36.4	20.5	9.3	-0.7
97%	6.0	13.1	34.8	19.4	8.5	-0.7
98%	6.3	11.3	32.5	17.8	7.4	-0.7
99%	7.0	8.9	28.4	15.5	5.3	-0.7



Non-Parents

Non-parent animals EPDs are based on the animal's own performance and the performance of related individuals. Although low in accuracy, these estimates are superior to using adjusted weights and ratios, and are important in the selection and merchandising of young breeding stock.

Animals Born in Year 2013

These animals are the most current, complete group of non-parents available. Young sires and dams born in 2013 can be evaluated using this chart.

All Non-Parents — EPD Means and Ranges						
	BW	WW	YW	MV	Milk	SC
#	57496	57496	57494	57473	57473	55877
Avg.	2.7	33.6	65.9	36.8	20.0	0.0
Low	-5.1	84.6	140.9	74.2	40.4	1.4
High	10.9	-14.4	-3.1	0.0	-0.5	-1.0

Animals Born in 2013 — EPD Means and Ranges						
	BW	WW	YW	MV	Milk	SC
#	1565	1565	1565	1563	1563	1486
Avg.	2.5	43.2	80.8	46.2	24.5	0.1
Low	-4.8	84.6	136.2	74.2	40.4	1.0
High	7.9	0.0	0.0	0.0	0.0	-0.8

All Non-Parents — EPD Means and Ranges						
	BW	WW	YW	MV	Milk	SC
1%	-1.5	60.4	105.9	58.3	32.6	0.6
2%	-1.0	57.4	101.1	55.8	31.0	0.5
3%	-0.6	55.2	97.9	54.1	30.0	0.4
4%	-0.4	53.7	95.7	52.8	29.2	0.4
5%	-0.2	52.4	93.8	51.7	28.7	0.3
10%	0.5	48.1	87.5	48.0	26.6	0.2
15%	0.9	45.3	83.3	45.7	25.2	0.2
20%	1.2	43.0	80.0	43.8	24.1	0.1
25%	1.5	41.1	77.1	42.3	23.2	0.0
30%	1.8	39.4	74.5	41.0	22.5	0.0
35%	2.0	37.8	72.2	39.7	21.8	-0.1
40%	2.3	36.4	69.9	38.5	21.2	-0.1
45%	2.5	34.9	67.8	37.5	20.5	-0.2
50%	2.7	33.5	65.7	36.5	19.9	-0.2
55%	2.9	32.0	63.6	35.5	19.3	-0.3
60%	3.1	30.6	61.4	34.4	18.7	-0.3
65%	3.4	29.2	59.2	33.3	18.0	-0.4
70%	3.6	27.7	57.0	32.3	17.3	-0.4
75%	3.9	26.0	54.5	31.0	16.6	-0.5
80%	4.2	24.2	51.8	29.8	15.8	-0.5
85%	4.5	22.1	48.6	28.1	14.9	-0.6
90%	5.0	19.4	44.6	26.1	13.7	-0.6
95%	5.7	15.4	38.6	23.3	11.8	-0.7
96%	5.9	14.2	37.0	22.5	11.2	-0.7
97%	6.2	12.7	34.8	21.5	10.5	-0.7
98%	6.5	10.7	32.1	20.1	9.6	-0.7
99%	7.1	7.8	28.1	17.9	8.0	-0.7

Animals Born in 2013 — EPD Means and Ranges						
	BW	WW	YW	MV	Milk	SC
1%	-1.4	66.4	115.6	64.9	36.1	0.6
2%	-0.8	64.1	110.7	62.5	34.6	0.6
3%	-0.5	62.1	108.9	61.0	33.9	0.5
4%	-0.2	61.1	107.4	60.4	33.4	0.5
5%	0.0	60.2	106.3	59.7	32.6	0.4
10%	0.6	56.9	101.2	56.9	31.0	0.3
15%	0.9	54.0	97.9	55.0	29.7	0.3
20%	1.1	52.0	94.7	53.7	28.7	0.2
25%	1.4	50.1	92.1	52.2	28.0	0.2
30%	1.7	48.8	89.4	50.9	27.3	0.1
35%	1.8	47.3	87.0	49.7	26.6	0.1
40%	2.0	46.0	84.7	48.6	25.9	0.0
45%	2.3	44.7	82.7	47.3	25.3	-0.1
50%	2.5	43.1	80.8	46.5	24.6	-0.1
55%	2.7	41.6	78.8	45.2	23.9	-0.2
60%	2.9	40.3	76.6	44.0	23.2	-0.2
65%	3.1	39.0	74.4	43.0	22.5	-0.3
70%	3.3	37.5	72.3	41.8	21.8	-0.3
75%	3.5	36.1	69.7	40.3	21.0	-0.4
80%	3.8	34.4	67.5	39.0	20.2	-0.4
85%	4.1	32.5	64.5	36.9	19.3	-0.5
90%	4.6	30.4	60.8	35.0	18.2	-0.6
95%	5.3	25.9	55.9	31.6	16.4	-0.6
96%	5.4	24.1	54.4	30.3	15.7	-0.6
97%	5.5	22.5	51.2	29.7	15.2	-0.6
98%	5.9	20.9	47.9	28.5	14.6	-0.6
99%	6.3	18.1	43.5	26.1	13.3	-0.6

2015 Sire Summary

Name	Herds	BW	WW	YW	MWW	Milk	SC	Marb	CW	Fat	REA	RY
Reg#	#DC	Acc	Acc	Acc		Acc	Acc	Acc	Acc	Acc	Acc	Acc
Color	Sire				Owner(s)	Dam						
Breeder												
BC PROGRESS 315U	13	3.4	67	134	0.41	60		0.7	54.6	-0.01	0.38	1.2
194458 1/28/2008 FB	37	0.68	0.7	0.62		27		0.2	0.39	0.27	0.22	0.25
Blk POLLED	MJB ROMEO 125R			BC SASSY 6714S								
BIG COUNTRY BEEF GENETICS LODGE GRASS MT					BIG COUNTRY BEEF GENETICS LODGE GRASS MT; TRIPLE M INCORPORATED CLINTON NC							
BC ROCK 384X	1	1.6	61	100	0.19	59		-0.3	35.1	0	0.24	1
198256 3/17/2010 FB	0	0.5	0.56	0.44		28		0.08	0.25	0.11	0.09	0.1
Blk POLLED	DLC THE ROCK 52											
BIG COUNTRY BEEF GENETICS LODGE GRASS MT					BAR/E CATTLE CO CLINTON NC; BIG COUNTRY BEEF GENETICS LODGE GRASS MT							
BC ROMEO 335X	2	2.6	35	81	0.25	40		-0.3	31.5	-0.01	0.24	1.1
198251 2/26/2010 FB	3	0.55	0.55	0.46		23		0.09	0.27	0.13	0.1	0.12
Red POLLED	MJB ROMEO 125R											
BIG COUNTRY BEEF GENETICS LODGE GRASS MT					TRIPLE M INCORPORATED CLINTON NC							
BC ROYAL PRINCE 56R	2	3	34	63	0.36	40		1	17	0.01	0.07	0.5
187558 9/23/2005 FB	4	0.63	0.64	0.55		23		0.14	0.34	0.2	0.16	0.18
Red POLLED	DLC ROYAL LAD 21											
BIG COUNTRY BEEF GENETICS LODGE GRASS MT					X-E STOCK RANCH MOSES LAKE WA							
BC SHILO 63S	4	3.6	39	78	0.36	44		1	23.9	0.02	0.13	0.5
190525 9/21/2006 FB	5	0.64	0.66	0.55		25		0.2	0.35	0.27	0.22	0.25
Blk POLLED	DLCC SURE-ENUF											
BIG COUNTRY BEEF GENETICS LODGE GRASS MT					BIG COUNTRY BEEF GENETICS LODGE GRASS MT							
BC WRANGLER 357W	1	4.7	47	101	0.21	53		0.2	40.3	-0.01	0.27	1.1
P196233 3/4/2009 FB	0	0.54	0.58	0.47		30		0.11	0.27	0.15	0.12	0.14
Red POLLED	DLCC STAMINA 138R											
BIG COUNTRY BEEF GENETICS LODGE GRASS MT					X-E STOCK RANCH MOSES LAKE WA							
BGC F37W	1	0.7	45	80	0.18	40		0.1	27.8	0.01	0.27	0.8
198522 9/27/2009 FB	1	0.44	0.47	0.41		18		0.01	0.24	0.03	0.03	0.02
Red HORNED	HILLTOP ACRES BLACK JACK											
BILLIE G CULP NEOSHO MO					BILLIE G CULP NEOSHO MO							
CIMARRON AVENGER 135Y	1	2.6	54	98	0.14	54	0.1	0.4	33.3	0.01	0.23	0.9
203209 3/9/2011 FB	0	0.48	0.5	0.41		27		0.29	0.03	0.24	0.05	0.05
Red POLLED	CIMARRON CARUSO 923W											
BOLLENBACH CATTLE COMPANY KINGFISHER OK					BOLLENBACH CATTLE COMPANY KINGFISHER OK							
CIMARRON BIG GUN 44X	1	5.6	53	95	0.17	53	0.4	0.4	33.9	0	0.22	1
200876 2/23/2010 FB	0	0.55	0.58	0.49		27		0.35	0.05	0.29	0.08	0.07
Red POLLED	CIMARRON BOLD OKIE 884U											
BOLLENBACH CATTLE COMPANY KINGFISHER OK					BOLLENBACH CATTLE COMPANY KINGFISHER OK							
CIMARRON BIG SHOT 436P	11	4	43	96	0.55	59	0.4	0.9	32.1	0.04	0.21	0.4
183087 1/31/2004 FB	29	0.76	0.76	0.68		38		0.35	0.24	0.43	0.32	0.29
Blk POLLED	MJB LONE MOUNTAIN 5528L											
BOLLENBACH CATTLE COMPANY KINGFISHER OK					MJB RANCH LODGE GRASS MT							
CIMARRON BOLD OKIE 18X	1	4.3	54	94	0.21	55	0.7	0.4	29.3	0.01	0.18	0.9
200930 2/11/2010 FB	0	0.57	0.59	0.49		28		0.34	0.06	0.3	0.09	0.08
Red POLLED	CIMARRON MAVERICK 549R											
BOLLENBACH CATTLE COMPANY KINGFISHER OK					BOLLENBACH CATTLE COMPANY KINGFISHER OK							
CIMARRON BOLD OKIE 20X	1	0.9	44	60	0.21	49	0.5	0.3	15.3	0.01	0.18	0.8
200992 2/12/2010 FB	0	0.4	0.52	0.46		27		0.35	0.05	0.28	0.08	0.08
Red POLLED	CIMARRON MAVERICK 549R											
BOLLENBACH CATTLE COMPANY KINGFISHER OK					BOLLENBACH CATTLE COMPANY KINGFISHER OK							
CIMARRON BOLD OKIE 49X	1	2.5	65	106	0.23	64		0.5	35.7	0.01	0.21	0.9
200945 2/26/2010 FB	0	0.57	0.59	0.5		31		0.06	0.3	0.09	0.08	0.09
Red POLLED	CIMARRON MAVERICK 549R											
BOLLENBACH CATTLE COMPANY KINGFISHER OK					T-P FARMS CLINTON NC							
CIMARRON BONANZA 174L	2	4.2	64	115	0.29	44	0.5	-0.9	51.1	0.01	0.68	1.7
173439 3/3/2001 FB	6	0.57	0.59	0.52		12		0.3	0.2	0.32	0.25	0.24
Red POLLED	CIMARRON TRADITION 933J											
BOLLENBACH CATTLE COMPANY KINGFISHER OK					MILLIGAN FARMS & RANCHES HOOPER NE							
CIMARRON CARUSO 923W	2	5.5	67	126	0.24	53	0.3	0.5	46	0.01	0.22	0.8
198943 2/10/2009 FB	4	0.65	0.67	0.59		20		0.42	0.09	0.34	0.13	0.12
Blk POLLED	CIMARRON REBEL 707T											
BOLLENBACH CATTLE COMPANY KINGFISHER OK					TRIPLE M INCORPORATED CLINTON NC							
CIMARRON CASSANOVA 23X	1	-0.6	36	44	0.16	45	-0.2	0.5	10.2	0.01	0.15	0.8
201045 2/13/2010 FB	0	0.44	0.5	0.43		28		0.31	0.03	0.26	0.05	0.05
Red POLLED	CIMARRON BARNBURNER 826U											
BOLLENBACH CATTLE COMPANY KINGFISHER OK					BOLLENBACH CATTLE COMPANY KINGFISHER OK							

Main Sire Listing

Name	Herds	BW	WW	YW	MWW	Milk	SC	Marb	CW	Fat	REA	RY
Reg#	#DC	Acc	Acc	Acc		Acc	Acc	Acc	Acc	Acc	Acc	Acc
Color	Sire	Owner(s)				Dam						
Breeder												
CIMARRON CASSANOVA 354N	4	1.2	39	81	0.51	44	0.6	1.5	19.3	0.01	-0.08	0.3
179243 2/14/2003 FB	7	0.61	0.63	0.56		25	0.34	0.23	0.39	0.3	0.23	0.27
Blk POLLED	CIMARRON LUCKY 13K					CIMARRON LEGACY 0131K						
BOLLENBACH CATTLE COMPANY KINGFISHER OK						MJB RANCH LODGE GRASS MT						
CIMARRON CITATION 118Y	1	0.8	46	84	0.16	47	0.1	0.9	26.5	0.02	0.12	0.5
203173 3/6/2011 FB	0	0.51	0.54	0.43		24	0.3	0.05	0.24	0.07	0.06	0.06
Blk POLLED	CIMARRON CARUSO 922W					CIMARRON DESTINY 818H						
BOLLENBACH CATTLE COMPANY KINGFISHER OK						BOLLENBACH CATTLE COMPANY KINGFISHER OK						
CIMARRON LUCKY 13K	8	1	42	65	0.69	40	0	1.7	12.6	0.01	-0.15	0.4
169007 1/27/2000 FB	26	0.74	0.75	0.7		19	0.54	0.3	0.52	0.37	0.32	0.32
Red POLLED	CIMARRON ULTIMATE 667F					CIMARRON SUPERLATIVE 511						
BOLLENBACH CATTLE COMPANY KINGFISHER OK						BOLLENBACH CATTLE COMPANY KINGFISHER OK						
CIMARRON MAVERICK 371N	2	3	36	68	0.35	47	0.6	-0.6	25.5	-0.01	0.48	1.5
179209 2/23/2003 FB	3	0.49	0.52	0.45		29	0.31	0.14	0.29	0.2	0.16	0.18
Red POLLED	CIMARRON VIGILANTE 149L					CIMARRON SUNSET 4K						
BOLLENBACH CATTLE COMPANY KINGFISHER OK						RANDY & SHERRI HEISER RUSO ND						
CIMARRON REBEL 738T	1	2	56	96	0.45	43	0.3	-0.3	38.1	-0.01	0.29	1.3
192356 2/22/2007 PB	20	0.61	0.61	0.55		16	0.33	0.22	0.36	0.28	0.2	0.26
Red POLLED	MJB ROUNDUP 208R					CIMARRON BELLE 362N						
BOLLENBACH CATTLE COMPANY KINGFISHER OK						BRIKEN FARMS LLC JEFFERSON CITY MO						
CIMARRON REBEL 941W	4	3.4	56	106	0.3	53	0.1	0.6	40.8	-0.01	0.2	1
198091 2/17/2009 PB	9	0.55	0.57	0.5		25	0.31	0.11	0.31	0.15	0.12	0.13
Blk POLLED	MJB ROUNDUP 208R					CIMARRON PLAYMATE 136L						
BOLLENBACH CATTLE COMPANY KINGFISHER OK						MJB RANCH LODGE GRASS MT; NICHOLS FARMS LTD BRIDGEWATER IA						
CIMARRON REBEL 944W	1	2.9	49	93	0.26	53	-0.1	0	38.4	0	0.36	1.2
198898 2/10/2009 PB	4	0.66	0.68	0.57		29	0.38	0.07	0.32	0.1	0.09	0.09
Red POLLED	MJB ROUNDUP 208R					CIMARRON TWILIGHT 0149K						
BOLLENBACH CATTLE COMPANY KINGFISHER OK						RODNEY WOHLGEMUTH TOWANDA KS						
CIMARRON REBEL 948W	2	1.1	49	88	0.22	52	-0.4	0.7	32.9	0.01	0.15	0.8
198952 2/19/2009 PB	1	0.42	0.45	0.39		28	0.31	0.07	0.25	0.1	0.08	0.09
Red POLLED	MJB ROUNDUP 208R					CIMARRON LOLITA 521R						
BOLLENBACH CATTLE COMPANY KINGFISHER OK						FARNELL CATTLE COMPANY JACKSONVILLE TX						
CIMARRON SULTAN 123Y	2	4.5	64	111	0.14	58	0.7	0.2	42.8	0	0.33	1.1
203219 3/6/2011 FB	0	0.54	0.55	0.44		26	0.29	0.04	0.24	0.05	0.04	0.05
Red POLLED	CIMARRON REBEL 944W					CIMARRON SEDUCTION 607S						
BOLLENBACH CATTLE COMPANY KINGFISHER OK						FARNELL CATTLE COMPANY JACKSONVILLE TX						
CIMARRON SUPERIOR 380	6	2.9	33	70	0.66	41	0.1	0.5	21.1	-0.01	0.13	0.9
124174 9/17/1993 PB	32	0.75	0.76	0.68		25	0.37	0.15	0.45	0.19	0.15	0.17
Red POLLED	CIMARRON RULER 815					CIMARRON EMPRESS 12						
BOLLENBACH CATTLE COMPANY KINGFISHER OK						MAR-BET FARM PELLA IA						
CIMARRON SUPERIOR 442	30	1	37	83	0.86	44	0	2.5	17.9	0.06	-0.17	-0.5
125263 3/27/1994 FB	215	0.88	0.88	0.85		26	0.69	0.54	0.74	0.61	0.57	0.52
Red POLLED	CIMARRON RULER 815					CIMARRON SUNSET 935						
BOLLENBACH CATTLE COMPANY KINGFISHER OK						WAYNE DOHE LINCOLN KS						
CIMARRON TRIUMPH 705T	2	-4.5	24	36	0.48	46	-0.5	1	10.6	0.03	0.07	0.5
192390 1/29/2007 FB	19	0.63	0.67	0.61		34	0.37	0.18	0.4	0.27	0.22	0.25
Blk POLLED	CIMARRON BARNBURNER 545R					CIMARRON LOLITA 521R						
BOLLENBACH CATTLE COMPANY KINGFISHER OK						ELKINGTON BROS & SONS IDAHO FALLS ID; MJB RANCH LODGE GRASS MT						
CIRCLE S 61X	7	-3	6	15	0.69	26	-0.1	-0.3	1.6	0.01	0.25	0.8
110060 3/8/1988 FB	25	0.71	0.75	0.69		23	0.44	0.06	0.48	0.14	0.14	0.08
Red POLLED	LEACHMAN DEVON 828T					LEACHMAN JH S873						
CIRCLE S RANCH COMPANY THREE FORKS MT						WILLIAM L MCCLEEREY MANVILLE WY						
COLORADO ROMEO ROCKER	8	0.6	41	72	0.61	51	0	24.5	0	0.21	0.8	
106544 3/22/1986 FB	32	0.65	0.66	0.59		31	0.01	0.37	0.01	0.02	0.02	0.01
MXD HORNED	RIVER VALLEY ROCKER 100P					VIVIANETTE						
LLOYD & CAROL BURDICK CRAWFORD CO						LLOYD & CAROL BURDICK CRAWFORD CO						
COTEAU DYNAMITE 528	1	1.7	30	54	0.15	36	0.1	14.5	0.01	0.18	0.8	
197434 3/18/2009 PB	0	0.5	0.54	0.47		21	0.02	0.26	0.04	0.04	0.04	0.04
Red POLLED	DLC ROYAL LAD 172					COTEAU SUNRISE 65						
DIAMOND PLUS CATTLE GACKLE ND						DIAMOND PLUS CATTLE GACKLE ND						
DLC HUDSON LAD 017	4	3	34	85	0.25	42	-0.6	0.2	37.9	0.02	0.49	1.2
198434 4/11/2010 87.50%	5	0.68	0.69	0.55		25	0.28	0.13	0.31	0.19	0.15	0.18
Red SCURRED	DLC HUDSON 82U					DLC BOLERO LASS 600						
DAHL LAND & CATTLE CO GACKLE ND						MJB RANCH LODGE GRASS MT; DAHL LAND & CATTLE CO GACKLE ND						

2015 Sire Summary

Name	Herds	BW	WW	YW	MWW	Milk	SC	Marb	CW	Fat	REA	RY
Reg#	#DC	Acc	Acc	Acc		Acc	Acc	Acc	Acc	Acc	Acc	Acc
Color	Sire	Owner(s)										
Breeder												
DLC LEGACY 1121	1	3	53	111	0.12	52		0.3	40.7	0	0.23	0.9
200036	0	0.46	0.51	0.45		26		0.09	0.26	0.13	0.11	0.12
Blk	DLC LEGACY 71	DLC MS SURE ENUF 811U										
DAHL LAND & CATTLE CO GACKLE ND		MJB RANCH LODGE GRASS MT; ELKINGTON BROS & SONS IDAHO FALLS ID										
DLC LEGACY 55	2	2.2	35	70	0.44	62	0.5	0.4	19.1	0.04	0.12	0.3
190782	12	0.67	0.69	0.63		44	0.42	0.21	0.38	0.3	0.24	0.27
Red	SBCC ROYAL LEGACY 5123	DLC MISS BOLERO 221										
DAHL LAND & CATTLE CO GACKLE ND		DAHL LAND & CATTLE CO GACKLE ND										
DLC LEGACY 71	1	4.6	48	102	0.24	50		-0.1	36.8	-0.01	0.3	1.1
190815	5	0.63	0.64	0.58		26		0.15	0.33	0.22	0.17	0.2
Red	SBCC ROYAL LEGACY 5123	DLC ROYAL LASS 415										
DAHL LAND & CATTLE CO GACKLE ND		DAHL LAND & CATTLE CO GACKLE ND										
DLC LEGACY 72	1	2.4	35	59	0.21	39		-0.1	16.8	0	0.13	0.9
190812	3	0.41	0.45	0.39		22	0.09	0.24	0.24	0.15	0.12	0.14
Red	SBCC ROYAL LEGACY 5123	DLC IMPACT LASSIE 405										
DAHL LAND & CATTLE CO GACKLE ND		DIAMOND PLUS CATTLE GACKLE ND										
DLC LEGACY 72U	1	0.3	34	58	0.24	42		0.3	19.1	0.01	0.18	0.8
193763	3	0.57	0.62	0.54		26		0.1	0.31	0.16	0.13	0.15
Red	SBCC ROYAL LEGACY 5123	DLC MISS ROYAL LASS 508										
DAHL LAND & CATTLE CO GACKLE ND		DIAMOND PLUS CATTLE GACKLE ND; DAHL LAND & CATTLE CO GACKLE ND										
DLC LEGACY LAD 1105	3	4	52	94	0.14	51		0.4	33.6	0.01	0.27	0.8
199992	0	0.5	0.52	0.44		25		0.06	0.25	0.09	0.07	0.08
Red	DLC LEGACY 71	DLC BOLERO LASS 601										
DAHL LAND & CATTLE CO GACKLE ND		DAHL LAND & CATTLE CO GACKLE ND; MJB RANCH LODGE GRASS MT										
DLC MR ROCK 41W	5	2.9	48	88	0.29	55	-0.7	-0.1	31.5	0.03	0.32	0.7
195881	4	0.54	0.57	0.52		31	0.42	0.15	0.33	0.22	0.18	0.21
Red	X-E ROCK P296	DLC MISS ROYAL 016										
DAHL LAND & CATTLE CO GACKLE ND		DARLYNN CATTLE COMPANY PIERZ MN; MJB RANCH LODGE GRASS MT										
DLC MR ROYAL 187	1	1.7	21	58	0.18	45	-0.1	0.2	21.4	0.01	0.41	1
198420	0	0.41	0.45	0.39		34	0.32	0.12	0.25	0.18	0.15	0.17
Red	DLC MR ROYAL DUKE 40	DLC MISS BOLERO 507										
DAHL LAND & CATTLE CO GACKLE ND		DAHL LAND & CATTLE CO GACKLE ND										
DLC ROCKIE 52U	1	0.4	23	59	0.21	42		0.7	17.5	0.02	0.16	0.4
193733	0	0.51	0.57	0.47		30		0.11	0.28	0.17	0.14	0.16
Red	X-E ROCK P296	DLC LADY MARVEL 309										
DAHL LAND & CATTLE CO GACKLE ND		DIAMOND PLUS CATTLE GACKLE ND; DAHL LAND & CATTLE CO GACKLE ND										
DLC ROCKY LAD 42W	1	1.4	31	70	.021	40		0.5	23.8	0.02	0.25	0.7
195890	0	0.48	0.5	0.44		25		0.16	0.28	0.23	0.19	0.21
Red	X-E ROCK P296	DLC MISS ROYAL 129										
DAHL LAND & CATTLE CO GACKLE ND		DAHL LAND & CATTLE CO GACKLE ND										
DLC ROYAL LAD 1139	7	0.5	54	98	0.13	54		0.5	33.2	0.01	0.12	0.6
200031	0	0.6	0.62	0.51		27		0.1	0.28	0.14	0.11	0.13
Red	DLC BLACK LAD 60W	DLC ROCKETTE 803U										
DAHL LAND & CATTLE CO GACKLE ND		MJB RANCH LODGE GRASS MT; ELKINGTON BROS & SONS IDAHO FALLS ID; DARLYNN CATTLE COMPANY PIERZ MN										
DLC SHILO LAD 1100	1	3.8	61	110	0.13	64	-0.4	0.8	35.7	0.02	0.11	0.5
200083	0	0.37	0.47	0.45		34	0.29	0.13	0.27	0.18	0.15	0.17
Blk	BC SHILO 63S	MJB ROCKETTE 9594W										
MJB RANCH LODGE GRASS MT		DAHL LAND & CATTLE CO GACKLE ND										
DLC THE ROCK 52	6	1.5	47	90	0.55	59		0.5	28	0.01	0.22	0.7
190752	31	0.79	0.79	0.7		36		0.23	0.44	0.32	0.26	0.29
Red	X-E ROCK P296	DLC MISS BOLERO 009										
DAHL LAND & CATTLE CO GACKLE ND		DAHL LAND & CATTLE CO GACKLE ND; MJB RANCH LODGE GRASS MT										
DLC BLACK ENUF 127J	51	0.7	31	62	0.78	35	0	0.2	18.6	0.01	0.18	0.6
169690	107	0.8	0.8	0.75		20	0.38	0.36	0.59	0.42	0.34	0.38
Blk	MAPLE LEAF EBONY 11F	DLCC TILLY 67E										
DARLYNN CATTLE COMPANY PIERZ MN		JOEL POPKEN SWANVILLE MN; DARLYNN CATTLE COMPANY PIERZ MN; TRIPLE M INCORPORATED CLINTON NC										
DLCC CHANCE 52X	2	3.9	45	103	0.2	61		0.2	41.9	0.01	0.35	1.1
198753	3	0.57	0.6	0.49		38		0.16	0.29	0.24	0.17	0.22
Blk	DLCC HUDSON 82U	DLCC CASSIE 61T										
DARLYNN CATTLE COMPANY PIERZ MN		JOEL POPKEN SWANVILLE MN										
DLCC CONTENDER 20C	3	10.1	59	113	.072	45	0.5	0.2	31.4	0	-0.04	0.5
121253	36	0.75	0.76	0.67		15	0.26	0.21	0.46	0.28	0.2	0.25
Red	LEACHMAN MR MONTANA 872U	DLCC BAILEE 6Z										
DARLYNN CATTLE COMPANY PIERZ MN		JOEL POPKEN SWANVILLE MN										

Main Sire Listing

Name	Herds	BW	WW	YW	MWW	Milk	SC	Marb	CW	Fat	REA	RY
Reg#	#DC	Acc	Acc	Acc		Acc	Acc	Acc	Acc	Acc	Acc	Acc
Color	Sire	Owner(s)				Dam						
Breeder												
DLCC HUDSON 82U	7	1.5	42	95	0.37	54	-0.2	-0.4	43.3	0.02	0.56	1.4
193574 3/20/2008 87.50%	10	0.71	0.72	0.67		33	0.37	0.23	0.39	0.3	0.23	0.28
Red POLLED	MJB SHUR LOC 106S					DLCC PRINCESS MIA 78P						
LEAH GIESS PIERZ MN	DAHL LAND & CATTLE CO GACKLE ND; MJB RANCH LODGE GRASS MT; DARLYNN CATTLE COMPANY PIERZ MN											
DLCC LEGEND 145T	3	-0.2	34	67	0.4	45		0.9	18.8	0.02	0.11	0.5
193592 11/29/2007 PB	9	0.65	0.64	0.54		28		0.15	0.33	0.2	0.16	0.19
Blk POLLED	DLCC SURE THING 34P					DLCC LA DI DA 14K						
LANE GIESS PIERZ MN	TRIPLE M INCORPORATED CLINTON NC; DARLYNN CATTLE COMPANY PIERZ MN; MJB RANCH LODGE GRASS MT											
DLCC MT DUNDEE 9Y	4	2.8	38	88	0.17	50	0.8	0	26.9	0.02	0.13	0.7
200727 3/10/2011 FB	0	0.61	0.62	0.49		31	0.27	0.11	0.28	0.16	0.12	0.15
Red POLLED	CIMARRON BIG SHOT 436P					MJB NORTHERN LIGHT 4570P						
MJB RANCH LODGE GRASS MT	MJB RANCH LODGE GRASS MT; TRIPLE M INCORPORATED CLINTON NC											
DLCC OO LALA 62L	17	1	43	59	0.59	49		-0.9	14	-0.01	-0.06	1
173690 4/11/2001 PB	24	0.71	0.72	0.62		28		0.26	0.43	0.33	0.24	0.28
Blk POLLED	LEACHMAN PRIME TIME9859G					DLCC RED DIAMOND 68G						
DARLYNN CATTLE COMPANY PIERZ MN	JOEL POPKEN SWANVILLE MN											
DLCC OPEN RANGE 3R	19	2	47	94	0.62	61	-0.4	1.1	31.7	0.01	0.15	0.4
186509 2/28/2005 87.50%	41	0.76	0.75	0.67		38	0.31	0.29	0.45	0.35	0.24	0.32
Blk POLLED	MJB NORTH STAR 191N					DLCC BLACK BUTTON 27M						
DARLYNN CATTLE COMPANY PIERZ MN	KNN FARMS BAY CITY WI; R P FARMS SWANVILLE MN; DARLYNN CATTLE CO PIERZ MN; MJB RANCH LODGE GRASS MT											
DLCC PATRIOT 51Y	7	0.5	51	87	0.14	60	0.7	0	36	0.01	0.3	1
200723 4/4/2011 PB	0	0.45	0.49	0.4		35	0.29	0.08	0.23	0.11	0.07	0.1
Red POLLED	DLCC SHUR LOC 99W					DLCC GEMMA 104W						
LANE GIESS PIERZ MN	MJB RANCH LODGE GRASS MT											
DLCC PRO 24T	2	3.1	48	90	0.21	58		0.4	37	0	0.34	1.1
192468 3/14/2007 87.50%	0	0.39	0.52	0.42		34		0.12	0.26	0.18	0.14	0.17
Red POLLED	DLCC POLLED PRO 111H					MJB LAMIA 1540L						
DARLYNN CATTLE COMPANY PIERZ MN	RODNEY WOHLGEMUTH TOWANDA KS											
DLCC RANGE RIDER 60W	5	1.1	41	83	0.02	51	-0.8	1.4	26.1	0.02	0.15	0.2
197076 4/1/2009 PB	0	0.49	0.52	0.46		31	0.32	0.17	0.29	0.23	0.16	0.21
Blk POLLED	DLCC OPEN RANGE 3R					MJB SASSY 6521S						
DARLYNN CATTLE COMPANY PIERZ MN	DARLYNN CATTLE COMPANY PIERZ MN											
DLCC RED FOX 63G	16	2.6	34	69	0.63	30		1.5	21.5	0.02	0.14	0.5
134807 5/4/1997 PB	24	0.7	0.71	0.62		13		0.17	0.44	0.23	0.18	0.2
Red POLLED	CIMARRON REDROCK 478					FOXY LADY						
DARLYNN CATTLE COMPANY PIERZ MN	DARLYNN CATTLE COMPANY PIERZ MN											
DLCC SHUR LOC 99W	20	1	46	86	0.33	55	0.6	0.4	35.1	0.01	0.21	0.8
196653 4/14/2009 87.50%	12	0.69	0.71	0.64		32	0.47	0.24	0.37	0.29	0.21	0.27
Blk POLLED	MJB SHUR LOC 106S					VPG KEYSHA 047K						
DARLYNN CATTLE COMPANY PIERZ MN	DARLYNN CATTLE COMPANY PIERZ MN; LEACHMAN CATTLE OF CO WELLINGTON CO											
DLCC STAMINA 138R	13	7.6	44	96	0.61	55	1.1	-0.4	40.4	-0.01	0.46	1.6
188913 12/26/2005 FB	34	0.77	0.77	0.69		34	0.35	0.23	0.43	0.29	0.21	0.27
Blk POLLED	DLCC POLLED PRO 111H					DLCC KATARINA 147K						
DARLYNN CATTLE COMPANY PIERZ MN	DARLYNN CATTLE COMPANY PIERZ MN; MJB RANCH LODGE GRASS MT											
DLCC SURE THING TOO 119T	14	-0.3	51	85	0.5	49	0	0.9	32.4	0.01	0.07	0.6
192106 5/2/2007 87.50%	19	0.66	0.67	0.61		24	0.35	0.25	0.41	0.32	0.26	0.3
Blk POLLED	DLCC SURE-ENUF					DLCC PERFECT ENUF 4M						
LANE GIESS PIERZ MN	LANE GIESS PIERZ MN; GARY JONES CRANE VALLEY SK CANADA											
DLCC SURE-ENUF	33	0.3	33	69	0.79	42	-0.1	0.2	26.2	0.01	0.32	0.9
174528 5/6/2002 FB	120	0.85	0.85	0.8		25	0.46	0.44	0.61	0.51	0.4	0.48
Blk POLLED	DLCC BLACK ENUF 127J					DLCC MANDI 18K						
DARLYNN CATTLE COMPANY PIERZ MN	MJB RANCH LODGE GRASS MT; R P FARMS SWANVILLE MN; LEAH GIESS PIERZ MN											
DLCC WHIPLASH 1Y	10	-0.7	58	87	0.15	53	0.4	0.5	31.4	0.04	0.17	0.4
199722 1/1/2011 PB	0	0.59	0.62	0.51		25	0.3	0.17	0.27	0.21	0.14	0.19
Blk POLLED	DLCC SURE THING TOO 119T					DLCC DANCER 141T						
LANE GIESS PIERZ MN	DLCC WHIPLASH SYNDICATE PIERZ MN; DARLYNN CATTLE COMPANY PIERZ MN											
EBS GUIDANCE 626U	1	3.2	42	81	0.36	52		0.1	28.2	0.01	0.3	0.9
195512 3/3/2008 FB	10	0.52	0.58	0.52		31		0.17	0.33	0.23	0.19	0.21
Blk POLLED	DLCC SURE-ENUF					EBS MISS IDA 257S						
ELKINGTON BROS & SONS IDAHO FALLS ID	ELKINGTON BROS & SONS IDAHO FALLS ID											
HHSD BEAVER 1ST	44	1.6	34	69	0.83	25	0	-0.1	25.1	0.01	0.23	0.8
10706 4/22/1977 FB	132	0.81	0.82	0.78		8	0.35	0.06	0.62	0.13	0.14	0.12
MXD POLLED	ZORRA CHOLWELLS BEAVER					GATHERLEY JOAN 14TH						
HAGER & HAMPERS SOUTH DEVON SOUTH LYNEBORO NH	FLYING TRIANGLE PARTNRSP NORTH PLATTE NE											

2015 Sire Summary

Name	Herds	BW	WW	YW	MWW	Milk	SC	Marb	CW	Fat	REA	RY
Reg#	#DC	Acc	Acc	Acc		Acc	Acc	Acc	Acc	Acc	Acc	Acc
Color	Sire	Owner(s)										
Breeder						Dam						
HILLTOP ACRES BLACK JACK	2	0.8	41	69	0.47	36		0.2	19	0.03	0.25	0.6
185849 2/10/2005 FB	18	0.61	0.64	0.58		16		0.06	0.36	0.11	0.09	0.1
Blk POLLED	BRANDY CREEK 633M											
JACK OR MARY JO VANCE CHANCELLOR AL	BILLIE G CULP NEOSHO MO											
HS E PLURBIS UNUM	13	2.3	28	58	0.23	36		0.3	17.4	0.01	0.18	0.7
190982 1/4/2007 87.50%	4	0.56	0.52	0.39		22		0.07	0.22	0.09	0.07	0.08
Red SCURRED	DLC ROYAL LAD 21											
THREE CEDARS FARM DENMARK TN	THREE CEDARS FARM; SHOWBOAT CATTLE CO WINCHESTER KS; TENNESSEE RIVER MUSIC INC FT PAYNE AL											
HUBS 694	1	1.5	39	65	0.21	32		-0.1	19	0.01	0.25	0.9
189957 2/9/2006 FB	5	0.49	0.55	0.45		13		0.01	0.24	0.01	0.01	0.01
Red SCURRED	HUBS 90M											
4L SOUTH DEVONS FORT SCOTT KS	4L SOUTH DEVONS FORT SCOTT KS											
HUBS 984W	1	2.3	34	63	0.1	33		-0.1	18.1	0.01	0.26	0
199873 2/17/2009 FB	0	0.39	0.45	0.36		16		0.01	0.19	0.01	0.01	0
Red SCURRED	HUBS 694											
4L SOUTH DEVONS FORT SCOTT KS	4L SOUTH DEVONS FORT SCOTT KS											
KNN KASINO 19U	2	3.5	40	72	0.39	43		-0.2	25.9	0.01	0.24	1
194175 3/24/2008 PB	14	0.55	0.57	0.48		23		0.12	0.3	0.14	0.12	0.14
Blk POLLED	DLCC SURE-ENUF											
KNN FARMS BAY CITY WI	KNN FARMS BAY CITY WI											
KNN RANGER 37T	2	0.1	37	75	0.34	51		0.4	23	0.01	0.16	0.6
193165 5/17/2007 PB	8	0.57	0.6	0.48		33		0.08	0.27	0.1	0.07	0.09
Blk POLLED	DLCC OPEN RANGE 3R											
KNN FARMS BAY CITY WI	KNN FARMS BAY CITY WI											
LEACHMAN ATOMIC 9360F	6	2.6	36	76	0.57	34	0.3	-0.2	27.7	-0.01	0.31	1.1
132231 3/26/1996 FB	18	0.69	0.7	0.6		16	0.13	0.07	0.37	0.11	0.1	0.1
Red POLLED	LEACHMAN FULLCHARGE 907A											
LEACHMAN CATTLE CO BILLINGS MT	LEACHMAN CATTLE CO BILLINGS MT; MAR-BET FARM PELLA IA											
LJB T. C. DALLAS	28	3.6	42	80	0.72	30	0.2	-0.6	23.5	0.02	0.5	1.1
109222 4/4/1988 FB	76	0.78	0.79	0.74		10	0.33	0.11	0.53	0.18	0.17	0.13
Red POLLED	LJB TURBO CHARGER											
LINDA J BREITING MALCOM IA	HONEYCUTT RANCH HARRISON AR											
LVL - OLE 4U	2	4.9	40	81	0.17	46		-0.1	29.3	0	0.31	1.1
195711 9/7/2008 FB	0	0.42	0.45	0.36		26		0.07	0.2	0.09	0.07	0.08
Blk POLLED	DLCC STAMINA 138R											
BRIANA FERGUSON KERKHAVEN MN	BAR/E CATTLE CO CLINTON NC											
MAPLE LEAF LANDSLIDE	18	6.3	47	77	0.69	42		-0.2	14.1	0.01	0.07	0.7
124824 2/24/1994 FB	42	0.74	0.73	0.66		18		0.14	0.46	0.2	0.15	0.18
Red POLLED	HHH POLLED GLORY 55Y											
MAPLE LEAF ACRES LITTLE FALLS MN	DARLYNN CATTLE COMPANY PIERZ MN; BKB SOUTH DEVONS MULBERRY AR											
MAR-BET'S NORTH STAR	23	4.8	38	92	0.7	38	0.2	-0.2	30.7	0	0.24	0.8
11052 4/17/1981 FB	47	0.74	0.76	0.7		19	0.27	0.07	0.51	0.13	0.13	0.1
MXD HORNED	TREVEAN MORNING STAR											
MAR-BET FARM PELLA IA	MAR-BET FARM PELLA IA											
MJB MIDNIGHT RIDER R208L	5	1.3	40	78	0.54	36		-0.1	30.9	0	0.33	1
171284 3/21/2001 87.50%	14	0.67	0.67	0.58		16		0.18	0.39	0.22	0.17	0.21
Blk POLLED	CIMARRON ULTIMATE 561E											
MJB RANCH LODGE GRASS MT	MJB RANCH LODGE GRASS MT; SHOWBOAT CATTLE CO WINCHESTER KS											
MJB ROCK 367X	4	0.4	30	76	0.19	45		0.3	29.3	0	0.3	0.9
198151 3/11/2010 PB	0	0.44	0.48	0.41		30		0.13	0.26	0.19	0.15	0.17
Red POLLED	DLC THE ROCK 52											
MJB RANCH LODGE GRASS MT	KINKELAAR RANCH WINIFRED MT; MJB RANCH LODGE GRASS MT											
MJB ROMEO 125R	15	2.4	45	88	0.6	43	0.5	0.6	28.7	-0.02	0.14	0.9
P185558 1/29/2005 PB	43	0.78	0.78	0.7		21	0.28	0.23	0.47	0.32	0.25	0.29
Blk POLLED	CIMARRON CASSANOVA 354N											
MJB RANCH LODGE GRASS MT	RANDY & SHERRI HEISER RUSO ND; MJB RANCH LODGE GRASS MT											
MJB SHUR LOC 106S	13	1.4	42	86	0.44	46	-0.3	0	34.5	0.02	0.29	1
P188977 1/24/2006 FB	12	0.7	0.71	0.65		25	0.46	0.29	0.42	0.34	0.26	0.32
Red POLLED	DLCC SURE-ENUF											
MJB RANCH LODGE GRASS MT	MJB PROMISE 4550P											
	DARLYNN CATTLE COMPANY PIERZ MN; MJB RANCH LODGE GRASS MT											
MJB SWAGGER 330Z	3	0.3	41	85	0.15	47		-0.2	35.3	0	0.3	1.1
201818 3/4/2012 PB	0	0.49	0.48	0.36		26		0.07	0.2	0.1	0.07	0.09
Blk POLLED	MMM UNTOUCHABLE W810											
MJB RANCH LODGE GRASS MT	MJB RANCH LODGE GRASS MT											

Main Sire Listing

Name	Herds	BW	WW	YW	MWW	Milk	SC	Marb	CW	Fat	REA	RY
Reg#	#DC	Acc	Acc	Acc		Acc	Acc	Acc	Acc	Acc	Acc	Acc
Color	Sire	Owner(s)				Dam						
Breeder												
MJB UNIT 318U	3	0.5	42	72	0.22	43		0.5	25.4	0	0.14	0.9
P194272 1/29/2008 87.50%	2	0.46	0.49	0.42		22		0.13	0.27	0.19	0.15	0.18
Blk POLLED	MJB ROMEO 125R					MJB HOOKER 6795S						
MJB RANCH LODGE GRASS MT	FOUR J RANCH BRIDGER MT											
MJB UNITED 333U	2	2.5	50	97	0.34	53		0.6	31.1	-0.02	0.05	0.8
P194283 2/1/2008 PB	8	0.58	0.6	0.52		28		0.15	0.32	0.22	0.17	0.2
Red POLLED	MJB ROMEO 125R					MJB SUNLIGHT 6635S						
MJB RANCH LODGE GRASS MT	MJB RANCH LODGE GRASS MT											
MMM UNTOUCHABLE W810	7	1.4	60	106	0.3	59		-0.3	39.5	0.01	0.28	1
199405 8/27/2009 PB	12	0.74	0.75	0.63		29		0.15	0.33	0.21	0.16	0.19
Blk POLLED	DLCC ASTOUND 48S					BRANDY CREEK 68J						
TRIPLE M INCORPORATED CLINTON NC	TRIPLE M INCORPORATED CLINTON NC; MJB RANCH LODGE GRASS MT											
MR BLACKNIGHT SAMPSON 84	1	3.6	51	75	0.3	46	0.5	-0.6	29.1	0.01	0.26	1
195269 3/29/2008 FB	3	0.63	0.52	0.45		20	0.14	0.05	0.26	0.08	0.07	0.07
Blk POLLED	FJ MR BRIDGER 229M					MISS MCGREGOR 727G						
SAMPSON MCGREGOR STOCK FARM IRON RIVER AB CANADA	SAMPSON MCGREGOR STOCK FARM IRON RIVER AB CANADA											
MR SAMPSON 707T	1	2.7	41	63	0.27	50	0	0	18.6	0.01	0.2	0.8
192587 2/16/2007 FB	7	0.48	0.5	0.44		29	0.26	0.01	0.26	0.03	0.03	0.03
Red POLLED	MR SAMPSON 536R					MISS MCGREGOR 533R						
SAMPSON MCGREGOR STOCK FARM IRON RIVER AB CANADA	HENDRIKUS AND OR DAWN BRUINS ELK POINT ALBERTA CANADA											
MR SAMPSON 844U	1	3.8	39	76	0.15	44	-0.3	-0.1	27.6	0	0.25	0.9
195274 4/1/2008 FB	0	0.49	0.49	0.41		25	0.25	0.01	0.22	0.02	0.02	0.02
Red POLLED	NORTH PADDLE REBEL 1R					LCC DEVONAIRE LR057						
SAMPSON MCGREGOR STOCK FARM IRON RIVER AB CANADA	AARBO RANCHING LTD ELKPOINT CANADA AB											
MR SAMPSON 920W	1	-1.2	24	48	0.17	37		0.2	17.7	0	0.19	0.8
196828 3/21/2009 FB	0	0.4	0.45	0.39		25		0.02	0.23	0.04	0.04	0.03
Red POLLED	MR SAMPSON 536R					MISS MCGREGOR 726G						
SAMPSON MCGREGOR STOCK FARM IRON RIVER AB CANADA	RON AND DEAN CARBERT DORINTOSH CANADA SK											
MVM SARGENT 654S	5	3.9	48	89	0.39	46		0.4	29.7	0.01	0.19	0.7
190721 4/6/2006 PB	8	0.58	0.59	0.44		22	0.09	0.25	0.1	0.08	0.1	0.1
Blk POLLED	DLC ROYAL LAD 21					TRM HS SBCC DOUBLE IMAGE						
MAR-BET FARM PELLA IA												
NICHOLS BLACK PERFECTION	1	6.9	31	69	0.12	42		0.1	17.7	0.01	0.18	0.7
202691 8/31/2010 87.50%	0	0.48	0.51	0.44		26		0.09	0.23	0.13	0.11	0.12
Blk POLLED	DOUBLE DOOZIE					NICHOLS S906						
NICHOLS FARMS NC DIVISION CLINTON NC	NICHOLS FARMS LTD BRIDGEWATER IA; NICHOLS FARMS MISSOURI DIV LAMAR MO; TRIPLE M INC CLINTON NC											
NICHOLS T807	2	2.9	54	87	0.12	63		-0.2	29.8	0	0.3	1
S194557 9/14/2007 FB	0	0.44	0.47	0.39		36		0.03	0.21	0.04	0.04	0.04
Blk SCURRED	NICHOLS P811					NICHOLS R915						
TRIPLE M INCORPORATED CLINTON NC	TRIPLE M INCORPORATED CLINTON NC											
NICHOLS T811	1	4.7	41	70	0.22	50		-0.1	18.6	0.01	0.25	0.8
194561 9/19/2007 FB	3	0.52	0.58	0.44		30	0.03	0.22	0.05	0.04	0.04	0.04
Blk SCURRED	NICHOLS P811					NICHOLS R906						
NICHOLS FARMS NC DIVISION CLINTON NC	BARVE CATTLE CO CLINTON NC											
ROYAL POET 306P	17	4.1	35	80	0.63	52		0	28.4	0	0.22	0.9
30302 5/7/1982 PB	31	0.71	0.73	0.65		34		0.01	0.42	0.05	0.05	0.04
MXD HORNED	ROYAL RED I					LADY EXETER 353L						
HORSESHOE RANCH EDEN PRAIRIE MN	D J MILLER SOUTH DEVONS BODE IA											
RP TORCH 23T	3	1.8	43	75	0.26	40		0.9	20.2	0.04	0.17	0.1
191106 3/17/2007 FB	2	0.55	0.57	0.49		19		0.15	0.3	0.21	0.14	0.19
Red POLLED	JP FOXFIRE 56K					RP PASSION 73P						
R P FARMS SWANVILLE MN	R P FARMS SWANVILLE MN											
RP UNIVERSAL 31U	2	2.1	37	63	0.24	47	-0.3	1.1	14.8	0.01	0.05	0.4
194597 3/1/2008 PB	2	0.52	0.55	0.45		29	0.23	0.13	0.27	0.19	0.13	0.17
Blk POLLED	DLCC SURE THING 34P					RP RED HAZE 73R						
R P FARMS SWANVILLE MN	R P FARMS SWANVILLE MN											
RP WAR WAGON 72W	4	0.1	51	88	0.17	56	-0.2	0.3	30.7	0	0.13	0.7
196137 4/22/2009 PB	1	0.48	0.5	0.41		30	0.23	0.13	0.25	0.19	0.13	0.17
Blk POLLED	DLCC OPEN RANGE 3R					RP TOP BLACK 05T						
R P FARMS SWANVILLE MN	R P FARMS SWANVILLE MN											
RP YAHTZEE 72Y	2	-1	33	68	0.22	51	0.1	0.8	20.7	0.02	0.14	0.3
199929 4/7/2011 PB	0	0.49	0.49	0.41		35	0.22	0.1	0.25	0.12	0.09	0.12
Blk POLLED	DLCC OPEN RANGE 3R					RP PASSION 73P						
R P FARMS SWANVILLE MN	R P FARMS SWANVILLE MN											

2015 Sire Summary

Name	Herds	BW	WW	YW	MWW	Milk	SC	Marb	CW	Fat	REA	RY
Reg#	#DC	Acc	Acc	Acc		Acc	Acc	Acc	Acc	Acc	Acc	Acc
Color	Sire	Owner(s)										
Breeder						Dam						
RP YOUNG GUN 63Y	2	2.2	40	80	0.21	49		0.6	25.2	0.01	0.15	0.5
199920	0	0.44	0.48	0.39		29		0.1	0.24	0.12	0.08	0.11
Blk	DLCC OPEN RANGE 3R	RP RICHES 51R										
R P FARMS SWANVILLE MN		SHOWBOAT CATTLE CO WINCHESTER KS; R P FARMS SWANVILLE MN										
SASH 10TH	3	2.9	37	73	0.7	28		-0.4	23.7	0	0.27	1
10540	49	0.69	0.71	0.63		9		0.02	0.44	0.06	0.05	0.05
MXD	WADDETON SASH	AMERICANA MELVINNEY										
BIG BEEF HYBRIDS INC JOPLIN MO		PAUL M SIEVERT RIVER FOREST IL										
SBCC 8103	1	3.4	46	88	0.71	47		0	28.8	0.02	0.31	0.8
160908	39	0.74	0.75	0.69		24		0.13	0.47	0.19	0.16	0.17
Red	LEACHMAN DEVONAIRE 9034E	SLF LADY 1027A										
KUNTZ & SONS BROOKLYN IA		X-E STOCK RANCH MOSES LAKE WA										
SBCC CROWN ROYAL 6226	5	1.4	33	63	0.43	31		0.6	17.7	0.02	0.12	0.4
188321	18	0.67	0.68	0.57		14		0.13	0.35	0.2	0.15	0.18
Red	DLC ROYAL LAD 21	MJB KOKO 0659K										
SHOWBOAT CATTLE CO WINCHESTER KS		SHOWBOAT CATTLE CO WINCHESTER KS										
SBCC MY NAME IS WHAT	4	2.9	43	78	0.65	35		-0.1	-0.3	24.7	0.02	0.25
163462	32	0.73	0.73	0.67		14		0.4	0.14	0.44	0.21	0.17
Red	DLCC PRIME TIME 41E	DDCC 4B										
SHOWBOAT CATTLE CO WINCHESTER KS		SAMPSON MCGREGOR STOCK FARM IRON RIVER AB CANADA; SHOWBOAT CATTLE CO WINCHESTER KS										
SBCC NOBLE LEGEND 3141	9	2.7	41	69	0.47	33		0.5	22.2	0.02	0.29	0.7
178627	11	0.65	0.68	0.56		13		0.18	0.34	0.24	0.14	0.22
Red	NORTH PADDLE LEGACY 32L	MJB HEATHER 8671H										
SHOWBOAT CATTLE CO WINCHESTER KS		JOEL POPKEN SWANVILLE MN										
SBCC PRINCE O TANGO 7110	2	4.5	37	60	0.25	37		0.8	11.8	0.03	0.14	0.3
191891	7	0.55	0.6	0.53		18		0.05	0.3	0.08	0.06	0.07
Red	BC PRINCE 45P	MJB PRIMADONNA 4622P										
SHOWBOAT CATTLE CO WINCHESTER KS		BILLIE G CULP NEOSHO MO										
SBCC RIDER'S DREAM 3125	1	2.8	50	92	0.59	46		0	34.9	0.02	0.38	0.9
178613	23	0.73	0.74	0.66		21		0.13	0.41	0.2	0.16	0.18
Red	MJB MIDNIGHT RIDER R208L S	BCC DREAMBOAT ANNIE										
SHOWBOAT CATTLE CO WINCHESTER KS		X-E STOCK RANCH MOSES LAKE WA										
SBCC ROYAL TRIBUTE 7125	1	0.3	27	50	0.25	32		0.7	11.1	0.01	0.08	0.4
191885	2	0.47	0.59	0.46		18		0.1	0.27	0.14	0.11	0.13
Red	DLC ROYAL LAD 21	SBCC NATURAL KELLY 3250										
SHOWBOAT CATTLE CO WINCHESTER KS		SHOWBOAT CATTLE CO WINCHESTER KS										
SBCC UNDENIABLE 8122	2	0.5	34	60	0.31	41		0.4	16.5	0.02	0.15	0.6
195319	6	0.57	0.58	0.48		24		0.08	0.28	0.12	0.09	0.11
Red	SBCC CROWN ROYAL 6226	SBCC NIRVANNA 3145										
SHOWBOAT CATTLE CO WINCHESTER KS		SHOWBOAT CATTLE CO WINCHESTER KS; MJB RANCH LODGE GRASS MT										
SBCC WINCHESTER 9128	2	4.1	52	97	0.25	39		0.6	36.3	0.01	0.27	0.7
197181	2	0.54	0.56	0.45		13		0.09	0.27	0.11	0.08	0.1
Red	DLC ROYAL LAD 21	MJB MOONSHINE 2700M										
MJB RANCH LODGE GRASS MT		SHOWBOAT CATTLE CO WINCHESTER KS										
SBCC WOMANIZER 9137	4	1.4	69	117	0.19	58		0.9	41.3	0.02	0.27	0.6
197191	0	0.44	0.49	0.43		24		0.09	0.26	0.13	0.09	0.12
Red	DLC THE ROCK 52	SBCC MIDNIGHT GWEN 5134										
SHOWBOAT CATTLE CO WINCHESTER KS		DARLYNN CATTLE COMPANY PIERZ MN										
SBCC YOSEMITE 1147	1	4.5	51	98	0.12	43		0	36.9	0.01	0.32	0.9
200548	0	0.47	0.51	0.41		17		0.04	0.22	0.09	0.07	0.08
Red	HB 64T	HB547M										
BURGESS RANCHES ECKERT CO		SHOWBOAT CATTLE CO WINCHESTER KS										
SKUNK RIVER IMPRESSION	24	4.8	25	57	0.7	27		0	-0.1	13.4	0.01	0.14
107268	34	0.77	0.79	0.73		15		0.32	0.07	0.52	0.13	0.1
Red	SKUNK RIVER TORO	SKUNK RIVER MARCILE										
DR T E FITZPATRICK LYNNVILLE IA		DOUBLE J SOUTH DEVONS CUMMINGS IA										
TC NERO	3	3.7	56	99	0.41	50		1.4	30.5	0.02	0	0.4
178700	4	0.6	0.6	0.5		22		0.12	0.3	0.17	0.13	0.15
Red	CIMARRON DYNAMIC 179L	TC MARIE										
TRIPLE CROWN SOUTH DEVON FARM RUSSELLVILLE MO		MAR-BET FARM PELLA IA										
TC TITUS	2	4.3	48	93	0.35	55		0.2	1.1	29.1	0.01	0.08
191949	5	0.6	0.61	0.53		32		0.36	0.21	0.33	0.2	0.24
Blk	DLCC SURE-ENUF	TC ROMA										
TRIPLE CROWN SOUTH DEVON FARM RUSSELLVILLE MO		BOLLENBACH CATTLE COMPANY KINGFISHER OK										

Main Sire Listing

Name	Reg#	DOB	%	Herds #DC Sire	BW Acc	WW Acc	YW Acc	MWW	Milk Acc Dam	SC Acc	Marb Acc	CW Acc	Fat Acc	REA Acc	RY Acc	
TC XPLOSION																
198811	2/13/2010	FB		1	4.4	48	93	0.18	47		-0.2	33.5	0.03	0.48	1	
Red	POLLED			1	0.57	0.6	0.5		23		0.17	0.29	0.23	0.16	0.21	
TRIPLE CROWN SOUTH DEVON FARM RUSSELLVILLE MO				CIMARRON BONANZA 174L					TC KRISIE							
				PATRICK SWYERS SALEM MO												
TC YADIER																
200213	2/6/2011	FB		1	1.1	37	79	0.24	50	-0.1	1.8	19.8	0.04	0.01	0	
Red	POLLED			0	0.47	0.49	0.4		32	0.14	0.17	0.26	0.21	0.16	0.19	
TRIPLE CROWN SOUTH DEVON FARM RUSSELLVILLE MO				CIMARRON SUPERIOR 442					MISS SHANNY							
				TRIPLE CROWN SOUTH DEVON FARM RUSSELLVILLE MO												
TC ZEUS																
202313	1/31/2012	FB		1	5.6	52	93	0.12	47		0	31	0.01	0.3	1	
Red	POLLED			0	0.42	0.45	0.35		21		0.06	0.19	0.08	0.05	0.07	
TRIPLE CROWN SOUTH DEVON FARM RUSSELLVILLE MO				TC XPLOSION					TC SUMMER							
				BILLIE G CULP NEOSHO MO												
TLC AUGUSTUS 22																
197868	5/11/2005	87.50%		3	3.8	44	81	0.16	42		0.5	27.5	0.01	0.25	0.8	
Blk	SCURRED			1	0.52	0.54	0.48		20		0.05	0.27	0.08	0.06	0.07	
THOMPSON LAND & CATTLE CO. MOTLEY MN				RP NEW VISION 06N					LCC DEVONAIRE MR006							
				THOMPSON LAND & CATTLE CO. MOTLEY MN												
TLC MACRAE 945X																
201780	4/27/2010	PB		8	7.3	61	106	0.11	50		0.4	35.6	0.01	0.18	0.8	
Blk	POLLED			2	0.6	0.61	0.48		20		0.06	0.24	0.08	0.05	0.07	
THOMPSON LAND & CATTLE CO. MOTLEY MN				TLC AUGUSTUS 22					TLC TANDI 645S							
				THOMPSON LAND & CATTLE CO. MOTLEY MN; MJB RANCH LODGE GRASS MT												
TLC TITUS 6539S																
193667	4/7/2006	87.50%		4	0.8	37	72	0.12	43		0	24.1	0.01	0.23	0.8	
Blk	POLLED			1	0.42	0.46	0.37		25		0.02	0.2	0.03	0.03	0.03	
THOMPSON LAND & CATTLE CO. MOTLEY MN				TLC TITAN 3015N					TLC CONNIE 4539P							
				BRANDON VAN WYK GRINNELL IA												
X-E MARSHALL X541																
199114	2/22/2010	FB		2	3.7	41	64	0.12	45		0	19.5	0.02	0.3	0.9	
Red	POLLED			0	0.47	0.51	0.41		25		0.02	0.21	0.03	0.03	0.03	
X-E STOCK RANCH MOSES LAKE WA				X-E RIDERS PRIDE U101					X-E MISS SANDY R541							
				X-E STOCK RANCH MOSES LAKE WA												
XE RED PRINCE T294																
192038	2/25/2007	PB		2	2.7	46	96	0.31	54		0.7	30	0.03	0.15	0.3	
Red	POLLED			6	0.57	0.6	0.48		31		0.04	0.27	0.07	0.06	0.06	
X-E STOCK RANCH MOSES LAKE WA				BC PRINCE 51P					X-E SANDY M294							
				X-E STOCK RANCH MOSES LAKE WA												



Walnut Grove Farm
South Devon
 16764 N Cedar Rd
 Valley Falls, KS 66088
 Mike 785/224-8860
 Stephanie 785/640-0586
 m_steinlicht@yahoo.com
 garrettandco2000@yahoo.com

Nichols Farms
Superior Beef Genetics
 2188 Clay Avenue ♦ Bridgewater, IA 50837
 Office: 641-369-2829
 Dave's Home: 712-762-3810 ♦ Fax: 641-369-2932
 Ross's Cell: 641-745-5241
 www.nicholsfarms.biz


2015 Sire Summary

Name	Herds	BW	WW	YW	MWW	Milk	SC	Marb	CW	Fat	REA	RY
Reg#	#DC	Acc	Acc	Acc		Acc	Acc	Acc	Acc	Acc	Acc	Acc
Color	Sire	Owner(s)										
Breeder						Dam						
BAR E BC PROGRESS Y-801	1	4.4	62	115	0.17	52	0.2	0.3	43	0	0.28	1
205327 3/6/2011 87.50%	0	0.38	0.39	0.34		21	0.19	0.07	0.2	0.1	0.07	0.09
Blk POLLED	BC PROGRESS 315U	MJB FLORAL 5683R										
MJB RANCH LODGE GRASS MT	BAR/E CATTLE CO CLINTON NC											
BGC F16W	1	2	35	68	0.17	35		0.1	21.8	0.01	0.22	0.7
196714 3/22/2009 FB	0	0.43	0.42	0.35		18		0.07	0.22	0.09	0.07	0.08
Blk SCURRED	DLCC BLACK ENUF 127J	MILDRED 337										
BILLIE G CULP NEOSHO MO	BILLIE G CULP NEOSHO MO											
BGC F38X	1	0.9	29	58	0.16	34		-0.1	19.7	0	0.21	0.8
200137 10/11/2010 FB	0	0.4	0.39	0.33		19		0.01	0.19	0.03	0.02	0.02
Blk HORNED	HILLTOP ACRES KING	MILDRED 443										
BILLIE G CULP NEOSHO MO	BILLIE G CULP NEOSHO MO											
CIMARRON AVENGER 234Z	2	5	59	108	0.12	56	0.1	0.5	39.8	0.01	0.23	0.9
204339 3/17/2012 FB	0	0.43	0.44	0.38		26	0.29	0.03	0.21	0.05	0.04	0.05
Blk POLLED	CIMARRON CARUSO 923W	CIMARRON DELILAH 926W										
BOLLENBACH CATTLE COMPANY KINGFISHER OK	MJB RANCH LODGE GRASS MT											
DLC HUDSON LAD 1111	2	0.8	33	78	0.14	45		-0.2	32.5	0.01	0.41	1.1
200017 4/24/2011 PB	0	0.38	0.41	0.36		29		0.07	0.21	0.09	0.07	0.09
Red POLLED	DLCC HUDSON 82U	DLC ROCKETTE 730										
DAHL LAND & CATTLE CO GACKLE ND	DAHL LAND & CATTLE CO GACKLE ND											
DLCC AMIGO 75X	2	2	40	85	0.2	52		-0.4	36.9	0.01	0.4	1.3
198670 3/20/2010 87.50%	1	0.36	0.38	0.34		32		0.1	0.22	0.18	0.13	0.16
Red POLLED	DLCC HUDSON 82U	DLCC PRECIOUS 113M										
LANE GIESS PIERZ MN	PHILIP HOY LIVING TRUST RANCH GILLETTE WY											
DLCC DODGE CITY 78Y	1	1.8	59	110	0.11	54		0.6	41.9	0.01	0.25	0.8
200720 4/22/2011 PB	0	0.34	0.4	0.35		25		0.05	0.2	0.07	0.05	0.07
Blk POLLED	SBCC WOMANIZER 9137	DLCC PERFECT ENUF 28W										
LANE GIESS PIERZ MN	LEON ATHMAN PIERZ MN											
DLCC DURANGO 26Z	1	2.5	56	104	0.15	62	0.1	-0.3	47.1	0	0.36	1.3
202828 3/30/2012 PB	0	0.36	0.41	0.36		35	0.3	0.13	0.23	0.18	0.13	0.16
Blk POLLED	DLCC SHUR LOC 99W	DLCC MANDI 55U										
LEAH GIESS PIERZ MN	NICHOLS FARMS LTD BRIDGEWATER IA; LEACHMAN CATTLE OF COLORADO WELLINGTON CO; WATINGA WILLALOOKA AUSTRALIA; DARLYNN CATTLE COMPANY PIERZ MN											
DLCC JUDGE 60Y	2	1.8	56	104	0.11	56	-0.3	0.6	38.4	0.02	0.22	0.6
200746 4/7/2011 PB	0	0.34	0.38	0.33		28	0.25	0.07	0.2	0.1	0.08	0.09
Blk POLLED	DLC MR ROCK 41W	DLCC KIT KAT 63U										
SPENCER LARSON PIERZ MN	KEEFER RIDGE CATTLE CO CINCINNATI OH											
DLCC LAKOTA 99Y	2	1.1	46	79	0.18	51	0.1	0.1	27	0.01	0.14	0.7
200734 5/11/2011 PB	0	0.36	0.4	0.36		28	0.28	0.09	0.23	0.12	0.09	0.11
Blk POLLED	DLCC SURE THING TOO 119T	DLCC MAGGIE MAY 11T										
LEAH GIESS PIERZ MN	WINTERS LIVESTOCK ENTRPRSES ZUMBROTA MN											
DLCC MUCH WISER 30Z	4	5.0	62	108	.01	64	0.3	0.8	36.1	0.03	0.26	0.6
202831 4/1/2012 FB	0	0.35	0.43	0.36		33	0.24	0.09	0.21	0.13	0.1	0.12
Blk POLLED	SBCC WOMANIZER 9137	DLCC MANDI 2X										
LEAH GIESS PIERZ MN	SHARON DOHE LINCOLN KS											
DLCC TRIO 74X	3	4.3	34	79	0.15	48		-0.1	36.7	0	0.48	1.5
198721 3/27/2010 PB	0	0.36	0.37	0.32		31		0.11	0.2	0.16	0.12	0.15
Blk POLLED	DLCC RANCHHAND 31R	DLCC CICI 1532N										
DARLYNN CATTLE COMPANY PIERZ MN	CLW SOUTH DEVONS WADENA MN											
DLCC TWISTER 96X	2	2.6	48	91	0.2	61		0.1	32.3	0.01	0.2	0.8
198741 5/3/2010 PB	2	0.38	0.37	0.31		37		0.1	0.19	0.12	0.08	0.11
Blk POLLED	DLCC OPEN RANGE 3R	MJB NORTHERN LIGHT 5645R										
DARLYNN CATTLE COMPANY PIERZ MN	ALUMBAUGH FARMS TRENTON MO											
EBS ELKER 523Z	1	-2.5	38	65	0.17	46		0.9	19.9	0.03	0.09	0.3
201500 3/21/2012 FB	0	0.4	0.44	0.38		27		0.1	0.23	0.16	0.12	0.14
Blk POLLED	CIMARRON TRIUMPH 705T	EBS MARTHA 975W										
ELKINGTON BROS & SONS IDAHO FALLS ID	ELKINGTON BROS & SONS IDAHO FALLS ID											
KNN JACKPOT 15Y	1	3.7	40	65	0.22	42		-0.4	16.7	0.01	0.12	0.9
201229 4/1/2011 PB	0	0.4	0.41	0.34		22		0.06	0.21	0.08	0.06	0.07
Red POLLED	MAPLE LEAF LANDSLIDE	DLCC KEYSHA 151N										
KNN FARMS BAY CITY WI	KNN FARMS BAY CITY WI											
KNN RED RANGER 42W	3	5.2	61	107	0.14	59		0.4	35.3	0.01	0.21	0.7
199512 6/9/2009 FB	2	0.42	0.39	0.32		29		0.03	0.17	0.05	0.03	0.04
Red POLLED	KNN RANGER 37T	MJB MONARCH 6677S										
KNN FARMS BAY CITY WI	KNN FARMS BAY CITY WI											

Genetic Indicator Listing

Name	Reg#	DOB	%	Herds #DC	BW Acc	WW Acc	YW Acc	MWW	Milk Acc Dam	SC Acc	Marb Acc	CW Acc	Fat Acc	REA Acc	RY Acc	Owner(s)
KNN UNDERDOG 32Z				1	0.1	43	81	0.16	55	-0.2	0.4	27.8	0.01	0.18	0.7	
202405	5/12/2012	FB		0	0.33	0.35	0.28		33	0.05	0.05	0.15	0.06	0.04	0.05	
Blk	POLLED															KNN RANGER 37T KNN KIA RIO 12T KNN FARMS BAY CITY WI; WINTERS LIVESTOCK ENTRPRSES ZUMBROTA MN
PAIGE M NELSON BAY CITY WI																
MJB BLACKFOOT 331Z				2	1.9	43	89	0.15	48	-0.2	0.36	0	0.3	1		
201819	3/4/2012	PB		0	0.39	0.41	0.32		26	0.07	0.19	0.1	0.07	0.09		
Blk	POLLED															MMM UNTOUCHABLE W810 MJB NIKKI 3657N MJB RANCH LODGE GRASS MT
MJB RANCH LODGE GRASS MT																
MJB ROCK 333X				1	4.5	63	112	0.18	66	0.3	39.1	0.01	0.33	1		
198124	2/23/2010	FB		0	0.35	0.37	0.33		35	0.1	0.21	0.16	0.12	0.14		
Red	POLLED															DLC THE ROCK 52 MJB TOLUCA 7803T KOUGL ANGUS RANCH TIMBER LAKE SD
MJB RANCH LODGE GRASS MT																
MJB ROMEO 315Y				1	2.5	45	87	0.19	47	0.6	0.4	31.3	0.01	0.32	0.9	
200294	2/5/2011	FB		0	0.35	0.38	0.33		24	0.26	0.11	0.22	0.17	0.13	0.15	
Blk	POLLED															MJB ROMEO 125R MJB SASSY 9502W THOMPSON LAND & CATTLE CO. MOTLEY MN; MJB RANCH LODGE GRASS MT
MJB RANCH LODGE GRASS MT																
MJB ROMEO 337Z				1	1	45	84	0.19	48	0.5	31.7	-0.01	0.17	1		
201824	3/7/2012	PB		0	0.36	0.39	0.34		26	0.12	0.22	0.18	0.14	0.17		
Blk	SCURRED															MJB ROMEO 125R MJB SHERIDAN 6867S MJB RANCH LODGE GRASS MT; DAHL LAND & CATTLE CO GACKLE ND
MJB RANCH LODGE GRASS MT																
MR SAMPSON 006W				1	2.3	48	80	0.14	53	-0.1	25	0	0.21	0.9		
196887	3/27/2009	FB		0	0.53	0.37	0.32		29	0.01	0.17	0.01	0.01	0.01		
Red	POLLED															NORTH PADDLE REBEL 1R MISS MCGREGOR 28R SAMPSON MCGREGOR STOCK FARM IRON RIVER AB CANADA
SAMPSON MCGREGOR STOCK FARM IRON RIVER AB CANADA																
MR SAMPSON 097X				1	0.5	47	69	0.15	51	-0.1	24.9	0	0.22	1		
199818	4/29/2010	FB		0	0.37	0.4	0.35		27	0.03	0.2	0.05	0.04	0.05		
Red	POLLED															MR ROCKY SAMPSON 543R MISS MCGREGOR 655S SAMPSON MCGREGOR STOCK FARM IRON RIVER AB CANADA
SAMPSON MCGREGOR STOCK FARM IRON RIVER AB CANADA																
SBCC ROYAL XCEPTION 012A				1	3.2	50	94	0.21	43	0.5	36.2	0.01	0.26	0.8		
199317	3/7/2010	PB		0	0.36	0.39	0.34		18	0.11	0.22	0.16	0.11	0.14		
Blk	POLLED															DLC ROYAL LAD 21 SBCC PR MOONSHINE 6236 MJB RANCH LODGE GRASS MT; SHOWBOAT CATTLE CO WINCHESTER KS
SHOWBOAT CATTLE CO WINCHESTER KS																
SBCC XCALIBUR 0144				1	0.4	45	73	0.18	45	0.2	21.2	0.01	0.19	0.7		
199192	4/4/2010	PB		0	0.37	0.4	0.33		22	0.05	0.19	0.1	0.07	0.09		
Red	POLLED															NORTH PADDLE LEGACY 32L HB RIATA 507H OREN & KAREN PILCHER MANCOS CO
SHOWBOAT CATTLE CO WINCHESTER KS																
SBCC ZEUS 2145				1	2.5	44	81	0.14	45	-0.1	0.5	28	0.02	0.25	0.7	
202401	4/12/2012	PB		0	0.38	0.41	0.32		23	0.04	0.02	0.17	0.03	0.02	0.03	
Red	POLLED															SBCC WINCHESTER 9128 HB ROCKY MTN ROCKETTE KNN FARMS BAY CITY WI
SHOWBOAT CATTLE CO WINCHESTER KS																
TC ZETH				1	1.6	66	110	0.1	63	-0.1	42.6	0	0.31	1.2		
202330	2/10/2012	FB		0	0.32	0.36	0.3		30	0.08	0.17	0.12	0.07	0.1		
Red	POLLED															TC ULYSSES TC XQUISITE TRIPLE CROWN SOUTH DEVON FARM RUSSELLVILLE MO
TRIPLE CROWN SOUTH DEVON FARM RUSSELLVILLE MO																
TLC DEETZ 9012				5	3	44	80	0.1	45	0.3	28.3	0.01	0.28	0.9		
197870	5/1/2009	PB		0	0.36	0.36	0.31		23	0.03	0.18	0.05	0.04	0.04		
Blk	SCURRED															TLC AUGUSTUS 22 LCC DEVONAIRE MR022 THOMPSON LAND & CATTLE CO. MOTLEY MN; HILL CREST SOUTH DEVONS GRINNELL IA
THOMPSON LAND & CATTLE CO. MOTLEY MN																
X-E DEPUTY Y06				1	2.6	39	72	0.13	43	1.1	19.4	0.02	0.03	0.3		
200782	3/11/2011	FB		0	0.43	0.39	0.31		23	0.05	0.17	0.07	0.05	0.06		
Red	POLLED															X-E LEGACY U804 BIEBER PLAYMATE 06N X-E STOCK RANCH MOSES LAKE WA
X-E STOCK RANCH MOSES LAKE WA																

Diamond Plus Cattle
SOUTH DEVON



6161 56th Ave SE
Gackle, ND 58442

David Presler
701-320-6934
super_dave_03@hotmail.com

Roger & Judy Presler
701-485-3505
dakotadpc@daktel.com

DM DIAMOND M RANCHING
South Devon Bulls

Red & black yearlings and
2 year old bulls
and (Poundmaker)
Angus/SouthDevon Bulls
and Heifers
Excellent converters of
grass and grain to beef.
British Breed, Quiet,
High Butterfat 4.5

dmrranching@gmail.com • 403.566.2467
Bulls sold off ranch

A Cattleman's Maternal Solution at TLC
You can find it all ...

**MATERNAL VALUE, FEED EFFICIENT, MODERATE-FRAME, GOOD UDDERS,
EASY FLESHING, GOOD FEET & LEGS, LONGEVITY AND PERFORMANCE
BREEDING PRACTICAL & FUNCTIONAL SOUTH DEVON CATTLE**

30 PERFORMANCE-TESTED BULLS FOR SALE * AVAILABLE NOW - DELIVERY MAY 15, 2015



THOMPSON LAND & CATTLE

6629 100th Street SW, Motley, MN 56466
Jace (801) 391-8989 • Vearl (320) 266-3098 • E-mail: thebricktwenty@lycos.com
www.thompsoncattle.com • Females for Sale Private Treaty

BALANCED TRAIT LEADERS

This list contains bulls that are below breed average for birth weight and above breed average for weaning, yearling, and milk EPD. To make the list an accuracy of .40 or better is required for birth weight and weaning weight.

Balanced Trait List

Name	Reg #	BW EPD	BW Acc	WWT EPD	WWT Acc	YWT EPD	YWT Acc	MWW EPD	MWW Acc	MILK EPD	MILK Acc	SC EPD	SC Acc
BC ROCK 384X	198256	1.6	0.5	61	0.56	100	0.44	59	0.19	28	0.19		
CIMARRON CASSANOVA 354N	179243	1.2	0.61	39	0.63	81	0.56	44	0.51	25	0.51	0.6	0.34
CIMARRON CITATION 118Y	203173	0.8	0.51	46	0.54	84	0.43	47	0.16	24	0.16	0.1	0.3
CIMARRON REBEL 948W	198952	1.1	0.42	49	0.45	88	0.39	52	0.22	28	0.22	-0.4	0.31
CIMARRON SUPERIOR 442	125263	1	0.88	37	0.88	83	0.85	44	0.86	26	0.86	0	0.69
COLORADO ROMEO ROCKER	106544	0.6	0.65	41	0.66	72	0.59	51	0.61	31	0.61		
DLC LEGACY 55	190782	2.2	0.67	35	0.69	70	0.63	62	0.44	44	0.44	0.5	0.42
DLC ROYAL LAD 1139	200031	0.5	0.6	54	0.62	98	0.51	54	0.13	27	0.13		
DLC THE ROCK 52	190752	1.5	0.79	47	0.79	90	0.7	59	0.55	36	0.55		
DLCC HUDSON 82U	193574	1.5	0.71	42	0.72	95	0.67	54	0.37	33	0.37	-0.2	0.37
DLCC LEGEND 145T	193592	-0.2	0.65	34	0.64	67	0.54	45	0.4	28	0.4		
DLCC OPEN RANGE 3R	186509	2	0.76	47	0.75	94	0.67	61	0.62	38	0.62	-0.4	0.31
DLCC PATRIOT 51Y	200723	0.5	0.45	51	0.49	87	0.4	60	0.14	35	0.14	0.7	0.29
DLCC RANGE RIDER 60W	197076	1.1	0.49	41	0.52	83	0.46	51	0.2	31	0.2	-0.8	0.32
DLCC SHUR LOC 99W	196653	1	0.69	46	0.71	86	0.64	55	0.33	32	0.33	0.6	0.47
DLCC SURE THING TOO 119T	192106	-0.3	0.66	51	0.67	85	0.61	49	0.5	24	0.5	0	0.35
DLCC SURE-ENUF	174528	0.3	0.85	33	0.85	69	0.8	42	0.79	25	0.79	-0.1	0.46
DLCC WHIPLASH 1Y	199722	-0.7	0.59	58	0.62	87	0.51	53	0.15	25	0.15	0.4	0.3
KNN RANGER 37T	193165	0.1	0.57	37	0.6	75	0.48	51	0.34	33	0.34		
MJB SHUR LOC 106S P	188977	1.4	0.7	42	0.71	86	0.65	46	0.44	25	0.44	-0.3	0.46
MJB SWAGGER 330Z	201818	0.3	0.49	41	0.48	85	0.36	47	0.15	26	0.15		
MJB UNIT 318U P	194272	0.5	0.46	42	0.49	72	0.42	43	0.22	22	0.22		
MMM UNTOUCHABLE W810	199405	1.4	0.74	60	0.75	106	0.63	59	0.3	29	0.3		
RP WAR WAGON 72W	196137	0.1	0.48	51	0.5	88	0.41	56	0.17	30	0.17	-0.2	0.23
RP YAHTZEE 72Y	199929	-1	0.49	33	0.49	68	0.41	51	0.22	35	0.22	0.1	0.22
RP YOUNG GUN 63Y	199920	2.2	0.44	40	0.48	80	0.39	49	0.21	29	0.21		
SBCC WOMANIZER 9137	197191	1.4	0.44	69	0.49	117	0.43	58	0.19	24	0.19		
TC YADIER	200213	1.1	0.47	37	0.49	79	0.4	50	0.24	32	0.24	-0.1	0.14
TLC TITUS 6539S	193667	0.8	0.42	37	0.46	72	0.37	43	0.12	25	0.12		

Balanced Trait List - Genetic Indicator Bulls Balanced Trait List

Name	Reg #	BW EPD	BW Acc	WWT EPD	WWT Acc	YWT EPD	YWT Acc	MWW EPD	MWW Acc	MILK EPD	MILK Acc	SC EPD	SC Acc
DLC HUDSON LAD 1111	200017	0.8	0.38	33	0.41	78	0.36	45	0.14	29	0.14		
DLCC AMIGO 75X	198670	2	0.36	40	0.38	85	0.34	52	0.2	32	0.2		
DLCC DODGE CITY 78Y	200720	1.8	0.34	59	0.4	110	0.35	54	0.11	25	0.11		
DLCC JUDGE 60Y	200746	1.8	0.34	56	0.38	104	0.33	56	0.11	28	0.11	-0.3	0.25
DLCC LAKOTA 99Y	200734	1.1	0.36	46	0.4	79	0.36	51	0.18	28	0.18	0.1	0.28
EBS ELKER 523Z	201500	-2.5	0.4	38	0.44	65	0.38	46	0.17	27	0.17		
KNN UNDERDOG 32Z	202405	0.1	0.33	43	0.35	81	0.28	55	0.16	33	0.16	-0.2	0.05
MJB BLACKFOOT 331Z	201819	1.9	0.39	43	0.41	89	0.32	48	0.15	26	0.15		
MJB ROMEO 337Z	201824	1	0.36	45	0.39	84	0.34	48	0.19	26	0.19		
MR SAMPSON 006W	196887	2.3	0.53	48	0.37	80	0.32	53	0.14	29	0.14		
MR SAMPSON 097X	199818	0.5	0.37	47	0.4	69	0.35	51	0.15	27	0.15		
SBCC XCALIBUR 0144	199192	0.4	0.37	45	0.4	73	0.33	45	0.18	22	0.18		
TC ZETH	202330	1.6	0.32	66	0.36	110	0.3	63	0.1	30	0.1		

2015 SOUTH DEVON TRAIT LEADERS

Sires are recognized as Trait Leaders in ten areas: birth weight, weaning weight, yearling weight, maternal weaning weight, scrotal circumference, marbling, carcass weight, fat thickness, ribeye area and balanced trait leader for the genetic indicator sires. Trait leader designation is strictly a recognition program. It is not an attempt to identify a "best" bull. The top 10 sires are recognized in each category, which represents approximately the top one percent of all sires in the South Devon breed.

In order to qualify as one of the Trait Leaders, a sire must have a minimum accuracy of .40 for birth, weaning and yearling weights. A .30 milk accuracy is required for maternal milk. Sires need only produce calves in one herd. The top 10 sires (plus ties) according to their EPD values that meet the minimum accuracy requirements are designated as Trait Leaders for the particular trait.

Birth Weight Trait Leaders

Name	Reg #	BW EPD	BW Acc	WW EPD	WW Acc	YW EPD	YW Acc	MWW EPD	Milk EPD	Milk Acc	SC EPD	SC Acc
CIMARRON TRIUMPH 705T	192390	-4.5	0.63	24	0.67	36	0.61	46	34	0.48	-0.5	0.37
CIRCLE S 61X	110060	-3	0.71	6	0.75	15	0.69	26	23	0.69	-0.1	0.44
EBS ELKER 523Z	201500	-2.5	0.4	38	0.44	65	0.38	46	27	0.17		
MR SAMPSON 920W	196828	-1.2	0.4	24	0.45	48	0.39	37	25	0.17		
RP YAHTZEE 72Y	199929	-1	0.49	33	0.49	68	0.41	51	35	0.22	0.1	0.22
DLCC WHIPLASH 1Y	199722	-0.7	0.59	58	0.62	87	0.51	53	25	0.15	0.4	0.3
CIMARRON CASSANOVA 23X	201045	-0.6	0.44	36	0.5	44	0.43	45	28	0.16	-0.2	0.31
DLCC SURE THING TOO 119T	192106	-0.3	0.66	51	0.67	85	0.61	49	24	0.5	0	0.35
DLCC LEGEND 145T	193592	-0.2	0.65	34	0.64	67	0.54	45	28	0.4		
KNN RANGER 37T	193165	0.1	0.57	37	0.6	75	0.48	51	33	0.34		
RP WAR WAGON 72W	196137	0.1	0.48	51	0.5	88	0.41	56	30	0.17	-0.2	0.23

Weaning Weight Trait Leaders

Name	Reg #	BW EPD	BW Acc	WW EPD	WW Acc	YW EPD	YW Acc	MWW EPD	Milk EPD	Milk Acc	SC EPD	SC Acc
SBCC WOMANIZER 9137	197191	1.4	0.44	69	0.49	117	0.43	58	24	0.19		
CIMARRON CARUSO 923W	198943	5.5	0.65	67	0.67	126	0.59	53	20	0.24	0.3	0.42
BC PROGRESS 315U	194458	3.4	0.68	67	0.7	134	0.62	60	27	0.41		
CIMARRON BOLD OKIE 49X	200945	2.5	0.57	65	0.59	106	0.5	64	31	0.23		
CIMARRON SULTAN 123Y	203219	4.5	0.54	64	0.55	111	0.44	58	26	0.14	0.7	0.29
CIMARRON BONANZA 174L	173439	4.2	0.57	64	0.59	115	0.52	44	12	0.29	0.5	0.3
DLCC MUCH WISER 30Z	202831	5	0.35	62	0.43	108	0.36	64	33	0.1	0.3	0.24
BC ROCK 384X	198256	1.6	0.5	61	0.56	100	0.44	59	28	0.19		
DLC SHILO LAD 1100	200083	3.8	0.37	61	0.47	110	0.45	64	34	0.13	-0.4	0.29
TLC MACRAE 945X	201780	7.3	0.6	61	0.61	106	0.48	50	20	0.11		

Yearling Weight Trait Leaders

Name	Reg #	BW EPD	BW Acc	WW EPD	WW Acc	YW EPD	YW Acc	MWW EPD	Milk EPD	Milk Acc	SC EPD	SC Acc
BC PROGRESS 315U	194458	3.4	0.68	67	0.7	134	0.62	60	27	0.41		
CIMARRON CARUSO 923W	198943	5.5	0.65	67	0.67	126	0.59	53	20	0.24	0.3	0.42
SBCC WOMANIZER 9137	197191	1.4	0.44	69	0.49	117	0.43	58	24	0.19		
CIMARRON BONANZA 174L	173439	4.2	0.57	64	0.59	115	0.52	44	12	0.29	0.5	0.3
DLCC CONTENDER 20C	121253	10.1	0.75	59	0.76	113	0.67	45	15	0.72	0.5	0.26
DLC LEGACY 1121	200036	3	0.46	53	0.51	111	0.45	52	26	0.12		
CIMARRON SULTAN 123Y	203219	4.5	0.54	64	0.55	111	0.44	58	26	0.14	0.7	0.29
DLC SHILO LAD 1100	200083	3.8	0.37	61	0.47	110	0.45	64	34	0.13	-0.4	0.29
CIMARRON BOLD OKIE 49X	200945	2.5	0.57	65	0.59	106	0.5	64	31	0.23		
TLC MACRAE 945X	201780	7.3	0.6	61	0.61	106	0.48	50	20	0.11		

Maternal Weaning Weight Trait Leaders

Name	Reg #	BW EPD	BW Acc	WW EPD	WW Acc	YW EPD	YW Acc	MWW EPD	Milk EPD	Milk Acc	SC EPD	SC Acc
DLC LEGACY 55	190782	2.2	0.67	35	0.69	70	0.63	62	44	0.44	0.5	0.42
DLCC OPEN RANGE 3R	186509	2	0.76	47	0.75	94	0.67	61	38	0.62	-0.4	0.31
BC PROGRESS 315U	194458	3.4	0.68	67	0.7	134	0.62	60	27	0.41		
CIMARRON BIG SHOT 436P	183087	4	0.76	43	0.76	96	0.68	59	38	0.55	0.4	0.35
DLC THE ROCK 52	190752	1.5	0.79	47	0.79	90	0.7	59	36	0.55		
MMM UNTOUCHABLE W810	199405	1.4	0.74	60	0.75	106	0.63	59	29	0.3		
DLCC STAMINA 138R	188913	7.6	0.77	44	0.77	96	0.69	55	34	0.61	1.1	0.35
TC TITUS	191949	4.3	0.6	48	0.61	93	0.53	55	32	0.35	0.2	0.36
DLCC SHUR LOC 99W	196653	1	0.69	46	0.71	86	0.64	55	32	0.33	0.6	0.47
XE RED PRINCE T294	192038	2.7	0.57	46	0.6	96	0.48	54	31	0.31		
DLCC HUDSON 82U	193574	1.5	0.71	42	0.72	95	0.67	54	33	0.37	-0.2	0.37

Milk Trait Leaders

Name	Reg #	BW EPD	BW Acc	WW EPD	WW Acc	YW EPD	YW Acc	MWW EPD	Milk EPD	Milk Acc	SC EPD	SC Acc
DLC LEGACY 55	190782	2.2	0.67	35	0.69	70	0.63	62	44	0.44	0.5	0.42
DLCC OPEN RANGE 3R	186509	2	0.76	47	0.75	94	0.67	61	38	0.62	-0.4	0.31
CIMARRON BIG SHOT 436P	183087	4	0.76	43	0.76	96	0.68	59	38	0.55	0.4	0.35
DLC THE ROCK 52	190752	1.5	0.79	47	0.79	90	0.7	59	36	0.55		
ROYAL POET 306P	30302	4.1	0.71	35	0.73	80	0.65	52	34	0.63		
DLCC STAMINA 138R	188913	7.6	0.77	44	0.77	96	0.69	55	34	0.61	1.1	0.35
CIMARRON TRIUMPH 705T	192390	-4.5	0.63	24	0.67	36	0.61	46	34	0.48	-0.5	0.37
KNN RANGER 37T	193165	0.1	0.57	37	0.6	75	0.48	51	33	0.34		
DLCC HUDSON 82U	193574	1.5	0.71	42	0.72	95	0.67	54	33	0.37	-0.2	0.37
DLCC SHUR LOC 99W	196653	1	0.69	46	0.71	86	0.64	55	32	0.33	0.6	0.47

Scrotal Circumference Trait Leaders

Name	Reg #	BW EPD	BW Acc	WW EPD	WW Acc	YW EPD	YW Acc	MWW EPD	Milk EPD	Milk Acc	SC EPD	SC Acc
DLCC STAMINA 138R	188913	7.6	0.77	44	0.77	96	0.69	55	34	0.61	1.1	0.35
CIMARRON BOLD OKIE 18X	200930	4.3	0.57	54	0.59	94	0.49	55	28	0.21	0.7	0.34
CIMARRON CASSANOVA 354N	179243	1.2	0.61	39	0.63	81	0.56	44	25	0.51	0.6	0.34
CIMARRON MAVERICK 371N	179209	3	0.49	36	0.52	68	0.45	47	29	0.35	0.6	0.31
DLCC SHUR LOC 99W	196653	1	0.69	46	0.71	86	0.64	55	32	0.33	0.6	0.47
CIMARRON BOLD OKIE 20X	200992	0.9	0.4	44	0.52	60	0.46	49	27	0.21	0.5	0.35
CIMARRON BONANZA 174L	173439	4.2	0.57	64	0.59	115	0.52	44	12	0.29	0.5	0.3
DLC LEGACY 55	190782	2.2	0.67	35	0.69	70	0.63	62	44	0.44	0.5	0.42
CIMARRON BIG GUN 44X	200876	5.6	0.55	53	0.58	95	0.49	53	27	0.17	0.4	0.35
CIMARRON BIG SHOT 436P	183087	4	0.76	43	0.76	96	0.68	59	38	0.55	0.4	0.35
DLCC WHIPLASH 1Y	199722	-0.7	0.59	58	0.62	87	0.51	53	25	0.15	0.4	0.3

Carcass Weight Trait Leaders

Name	Reg #	Marb	Acc	CW Acc	FAT Acc	REA Acc	Acc	Acc	Retail Yld Acc	Acc	
MAR-BET'S NORTH STAR	11052	-0.2	0.07	30.7	0.51	0	0.13	0.24	0.13	0.8	0.1
DLCC SURE-ENUF	174528	0.2	0.44	26.2	0.61	0.01	0.51	0.32	0.4	0.9	0.48
HBSD BEAVER 1ST	10706	-0.1	0.06	25.1	0.62	0.01	0.13	0.23	0.14	0.8	0.12
LJB T. C. DALLAS	109222	-0.6	0.11	23.5	0.53	0.02	0.18	0.5	0.17	1.1	0.13
DLCC BLACK ENUF 127J	169690	0.2	0.36	18.6	0.59	0.01	0.42	0.18	0.34	0.6	0.38
CIMARRON SUPERIOR 442	125263	2.5	0.54	17.9	0.74	0.06	0.61	-0.17	0.57	-0.5	0.52
SKUNK RIVER IMPRESSION	107268	-0.1	0.07	13.4	0.52	0.01	0.13	0.14	0.13	0.7	0.1
CIMARRON LUCKY 13K	169007	1.7	0.3	12.6	0.52	0.01	0.37	-0.15	0.32	0.4	0.32

2015 NASDA Membership Directory

Arkansas

JAMES R BERRYHILL **JRB**
 JAMES R BERRYHILL
 1338 GRAY LOOP
 LEOLA, AR 72084
 501-332-5937

California

JACK COWLEY **JC**
 JACK COWLEY
 7335 BALL MTN-LITTLE SHASTA RD
 MONTAGUE, CA 96064
 530-459-5506 jackcowley@4fast.net

FRASER RANCH **TOAR**
 LOUANN FRASER
 PO BOX 1200
 LINCOLN, CA 95648
 530-228-3567 frasercattle@aol.com

HAY COW **JLG**
 HEIDI GUERTIN
 660 RIOSA ROAD
 LINCOLN, CA 95648
 530-755-8065 heidi5403@gmail.com

SAN JUAN RANCH **SJ**
 RENEE MCCORMICK
 849 ALMAR AVE SUITE C PMB 282
 SANTA CRUZ, CA 95060
 831-457-3800 dearlover@sabt.com

Colorado

DOUBLE RL COMPANY **DRL**
 5180 HIGHWAY 62
 RIDGWAY, CO 81432
 970-626-5485 dblrl@montrose.net

DEBBIE GRAY **DBM**
 14499 RAPID CREEK ROAD
 HOTCHKISS, CO 81419-9438
 970-872-9373

LEACHMAN CATTLE OF COLORADO
 LEE LEACHMANN
 5100 ECR 70
 WELLINGTON, CO 80549
 970-568-3983

NORTH AMER SOUTH DEVON ASSN
 19590 E MAINSTREET #104
 PARKER, CO 80138
 303-770-3130

Idaho

ELKINGTON BROS & SONS **EBS**
 KEITH ELKINGTON
 5080 EAST SUNNYSIDE RD
 IDAHO FALLS, ID 83406
 208-523-2286 ephrbulls@hotmail.com

Iowa

E&B SOUTH DEVON **EB**
 ETHAN & BLAKE MILLER
 63777 GALVESTON ROAD
 ATLANTIC, IA 50022-9374
 712-243-5098

G&S SOUTH DEVONS **GS**
 GARY MILLER
 63777 GALVESTON ROAD
 ATLANTIC, IA 50022-9374
 712-243-5098

GEM SOUTH DEVONS **GEM**
 DR BARBARA HARRE
 13150 106 AVE
 DAVENPORT, IA 52804
 563-381-2294 bharre@aol.com

HILL CREST SOUTH DEVONS **EVW**
 SHARON & SHAWN VAN WYK
 401 460TH AVE
 GRINNELL, IA 50112
 641-593-6674 vanwykwoodbld@iowatelecom.net

JVM CATTLE COMPANY **JVM**
 JORDAN VANDER MOLEN
 1186 133RD STREET
 PELLA, IA 50219
 641-521-9917

KUNTZ & SONS **SLF**
 ART KUNTZ
 4082 170TH STREET
 BROOKLYN, IA 52211
 641-522-7179

D J MILLER SOUTH DEVONS **DJ**
 DAVID MILLER
 1308 HWY 169
 BODE, IA 50519
 515-295-9580 damiller@ncn.net

NICHOLS FARMS LTD **NFL**
 DAVE NICHOLS
 2188 CLAY AVE
 BRIDGEWATER, IA 50837
 641-369-2829 OFF nichols@nicholsfarms.biz

TRIPLE L FARMS **DEB**
 DAVID & ELLEN BEACHY
 20457 STATE HIGHWAY 2
 LEON, IA 50144
 515-446-3413

LEVI WOIWOOD **LLW**
 LEVI WOIWOOD
 1685 PALM AVE
 GARNER, IA 50438
 641-587-2186

Kansas

STAN & KAREN ALLEN **SKC**
 S&K CATTLE
 983 240TH AVE
 HAYS, KS 67601
 785-628-2398 skcattle@yahoo.com

BUTTERFLY ACRES **BFA**
 CAROL & JOHN WILKEN
 501 17TH ST
 VALLEY FALLS, KS 66088
 785-935-2185 butterflyacres@embargmail.com

COLBY COMMUNITY COLLEGE **CCC**
 NICK CONSULO
 1255 S RANGE
 COLBY, KS 67701
 785-460-5465 marcy.ward@colbycc.edu

DRW FARM **DRW**
 DAVID & RONDA WOHLGEMUTH
 5747 SW 20TH
 EL DORADO, KS 67042
 616-541-2667 rdwohl@sbcglobal.net

OAK CREEK FARMS **OCF**
 MAX & MARY HEIM
 3745 191ST STREET
 RUSSELL, KS 67665
 785-483-2921 mmheim@ruraltel.net

SHOWBOAT CATTLE CO **SBCC**
 CHARLES, LAUREN & CHACE TERRY
 13266 WELLMAN RD
 WINCHESTER, KS 66097-9718
 913-774-2628 PH & FAX boat@showboatco.com

BILL AND BRIDGET THOMAS **BBT**
 BILL AND BRIDGET THOMAS
 8890 NW PARALLEL ROAD
 TOWANDA, KS 67144
 316-253-3264 bridgetrthomas@yahoo.com

TLC FARMS LLC **TLCF**
 CURTIS OHLDE
 21430 SPRUCE ROAD
 EASTON, KS 66020
 913-683-5910 CELL cwohldecattleco@aol.com

WALNUT GROVE FARM **WGF**
 MIKE & STPHANIE STEINLICHT
 16764 NORTH CEDAR ROAD
 VALLEY FALLS, KS 66088
 785-224-8860 garrettandco2000@yahoo.com

RODNEY WOHLGEMUTH **WCC**
RODNEY WOHLGEMUTH
108 S 5TH
TOWANDA, KS 67144
316-541-2467

Kentucky

WINDY CREEK FARMS **KSP**
MARK HAYNES
317 FOX CHASE DRIVE
ELIZABETHTOWN, KY 42701
270-769-1383 mark@goldstarrealtyky.com

Louisiana

BALDRIDGE LOWLINES **BAL**
TIM & DANA BALDRIDGE
4729 RED CUT ROAD
WEST MONROE, LA 1292
baldrigelowlines@gmail.com

Massachusetts

THE KOEBKE FAMILY **JKK**
JIM & KRISANNE KOEBKE
33 KOEBKE ROAD
DUDLEY, MA 01571
508-949-2043 ameradaholsteins@charter.net

JEREMY SCHUTTE **FJM**
37 CHASE ST
NEWTON, MA 02459
617-964-4975

Minnesota

KENNETH A BADE **BLCC**
BADELAND CATTLE CO
41849 260TH STREET
ARLINGTON, MN 55307
507-964-5311

MACKENZIE BADE **BLCC**
MACKENZIE BADE
41849 260TH STREET
ARLINGTON, MN 55307
507-964-5311

DARLYNN CATTLE COMPANY **DLCC**
DAR & LYNN GIESS
33424 183RD STREET
PIERZ, MN 56364
320-468-0235 PH & FAX darlynn@fallsnet.com

DLCC WHIPLASH SYNDICATE
LYNN GIESS
33424 183RD STREET
PIERZ, MN 56364

BRIANA FERGUSON **LV**
BRIANA FERGUSON
1745 50TH STREET SE
KERKHAVEN, MN 56252
320-264-1213 sjahn@tds.net

J BOONE HAWLEY **BCC**
J BOONE HAWLEY
33424 183RD STREET
PIERZ, MN 56364
320-556-3495

JC FARM **JCF**
JASON FRANK
14347-210TH STREET
MILACA, MN 56353
320-282-3546 cjmbfrank@frontiernet.net

DONALD KOSCIELNIAK **KF**
7383 SAGE ROAD
HILLMAN, MN 56338
320-355-2152 farmlass@jetup.net

FOREST MALAKOWSKY **MAL**
66569 318 ST
HARTLAND, MN 56042
507-863-2266 mrforrestm@gmail.com

MAPLE LEAF ACRES **ML**
ROBERT & LINDA HOLMGREN
208 5TH STREET NW
LITTLE FALLS, MN 56345
320-749-2487 gogramma8@yahoo.com

MAPLE RIDGE FARM **MRF**
MATTHIAS J NOVAK
8155 380TH AVE
HILLMAN, MN 56338
320-355-2129 Novak@Cloudnet.com

KIM MORK **LD**
KIM MORK
2543 225TH AVE
BROOK PARK, MN 55007
320-679-3830 doris@kanabecabstract.com

JOEL POPKEN **JP**
JOEL POPKEN
33360 220TH STREET
SWANVILLE, MN 56382
320-547-2202 jpopken@wisper-wireless.com

R P FARMS **RP**
ROBERT POPKEN
33360 220TH STREET
SWANVILLE, MN 56382
320-547-2202

SADLER CATTLE COMPANY **SCC**
GAIL JOHNSON & JIM SADLER
21140 SAINT FRANCIS BLVD
ANOKA, MN 55303
612-581-8706

REBA SCHIESSER CERSOVSKY **RLS**
REBA SCHIESSER CERSOVSKY
10769 CO HWY 114
FERGUS FALLS, MN 56537
218-736-2605

STRANBERG CATTLE COMPANY **SC**
KURT SUSIE KYLE STRANBERG
6085 70TH STREET SE
MAYNARD, MN 56260
320-894-7047 thestranbergs@hotmail.com

THOMPSON LAND & CATTLE CO. **TLC**
JACE AND VEARL THOMPSON
6629 100 STREET SW
MOTLEY, MN 56466
320-266-3098 CELL vesrlthompson88@yahoo.com

WHISPERING SPRUCE FARM **WS**
TRAVIS OR CONNIE SCHLOSSER
16312 CR #3 NE
MILTONA, MN 56354
218-943-4318 travisconnie@midwestinfo.net

CHERYL L WHITE **CLW**
2696 HENSLOW AVE N
OAKDALE, MN 55128
651-770-3942 wfbeef@arvig.net

WHITE FARMS **WF**
DON WHITE
40649 CO HWY 19
WADENA, MN 56482
218-385-3877 whitefarm@arvig.net

WINTERS LIVESTOCK ENTRPRSES **WLE**
ERIC & JAMES WINTERS
815 19TH ST
ZUMBROTA, MN 55992
320-387-2920

Missouri

2H CATTLE COMPANY **HH**
BRIAN KUEFFER
6262 STRINGTOWN RD
RUSSELLVILLE, MO 65074
573-782-3804 bjkuesser@embargmail.com

ALUMBAUGH FARMS **DA**
DALE V AND TERESA M ALUMBAUGH
193 SW 52ND AVE
TRENTON, MO 64683
660-359-7808 OFF farmer6th@live.com

WHITNEY ALLEN BINGHAM **JWB**
WHITNEY ALLEN BINGHAM
677 SE 70TH STREET
CHULA, MO 64635
660-358-2101 bearcat.w.allen@gmail.com

BILLIE G CULP **BGC**
BILLIE CULP
20532 QUAIL ROAD
NEOSHO, MO 64850
417-628-3847 bgculp@leru.net

2015 NASDA Membership Directory

TROY AND DANA LOCKWOOD

TROY AND DANA LOCKWOOD
731 SW 55TH AVE
JAMESPORT, MO 64648

TDL

CHARLES MAYFIELD

RT 1 BOX 41
RUTLEDGE, MO 63563
816-434-5435

CKM

PARROTTE CATTLE COMPANY

JASON & CHELSEA PARROTTE
16010 S 825 ROAD
STOCKTON, MO 65785
660-953-0271 parrottecattleco@aol.com

PCC

STEPHEN B ROBERTS

STEPHEN B ROBERTS
P O BOX 585
MACON, MO 63552
660-385-4339 sroberts1@mofb.org

SR

TRIPLE CROWN SOUTH DEVON FARM

RANDALL J CAMPBELL
4114 STATE RT U
RUSSELLVILLE, MO 65074
573-782-3418 rcampbell@mofb.com

TC

ARLO TRUEBLOOD

ROUTE 1 BOX 6
ARBELA, MO 63432
816-945-3029

CAT

Montana

6 BAR LIVESTOCK

KEVIN AND CATHY WEIMER
28 BENT LANE
BRIDGER, MT 59014
406-860-9028

SIX

BIG COUNTRY BEEF GENETICS

LEO MCDONNELL & JIM BROWN
BOX 259
LODGE GRASS, MT 59050
406-639-2569 jdoubet@mjbattle.com

BC

MATT J BROWN

MATT BROWN
P O BOX 259
LODGE GRASS, MT 59050
406-639-2569 jdoubet@mjbattle.com

MJB

FOUR J RANCH

JACK SCHUTTE
58 BRIDGER/FROMBERG ROAD
BRIDGER, MT 59014
jackschutte99@gmail.com

FJ

JOHN GRANDE

541 LENNY ROUTE
MARTINSDALE, MT 59053
406-572-3335

JG

LEO MCDONNELL JR

W-2 RANCH
13 BULL DRIVE
COLUMBUS, MT 59019
406-433-5597

LM

MIDLAND BULL TEST

STEVE WILLIAMS
1640 N HWY 10
COLUMBUS, MT 59019
406-322-5597 bulls@midlandbulltest.com

MJB RANCH

JIM & MARY BROWN
BOX 259
LODGE GRASS, MT 59050
406-639-2569 jdoubet@mjbattle.com

MJB

Nebraska

ELDON & BLAYNE DOERR

54019 HWY 59
CREIGHTON, NE 68729
402-358-5489 ds59@webtv.net

EBD

JAKE & LIN JOHNSON

JAKE & LIN JOHNSON
15600 S HIGHWAY 281
HASTINGS, NE 68901
402-744-4501 jakejohnson@windstream.net

JLJ

JOHN MADDUX

JOHN MADDUX
74287 333 AVE
IMPERIAL, NE 69033
308-882-3016 jmaddux@chase3000.com

MCC

WILSON RANCH

BLAINE G WILSON
2676 213TH TRAIL
LAKESIDE, NE 69351
308-762-6026 bwlsranch@gmail.com

BW

New York

MACOMB MAPLE FARM

MIKE VANDENBERG
55 WARD ROAD
HAMMOND, NY 13646
315-744-4273 windmilllivestockny@yahoo.com

MMF

STEPHANIE SHERWOOD

STEPHANIE SHERWOOD
55 WARD ROAD
HAMMOND, NY 13646

MMF

North Carolina

BAR/E CATTLE CO

D STEPHEN ELMORE
1235 W MT GILEAD CH ROAD
CLINTON, NC 28328
910-385-6200 sandbelmore@centurylink.net

DSE

BRANDY CREEK FARM

JENNY M EDWARDS
803 E MASON STREET
FRANKLINTON, NC 27525
919-494-7135 DAY & NIGHT southdevon@aol.com

BCF

NAIRN FARMS SOUTH DEVON LLC

JAMES W NARRON
PO BOX 1523
SMITHFIELD, NC 27577
919-934-0049

JWN

T-P FARMS

A THOMAS MATHIS JR
1330 EDMOND MATHIS RD
CLINTON, NC 28328
910-592-3862 tpfarms6@aol.com

TP

TRIPLE M INCORPORATED

TONY RONNIE ELEANOR BETTY MATT
5607 MOSELEY AVENUE
CLINTON, NC 28328
910-385-5260 beefman@centurylink.net

MMM

North Dakota

DAHL LAND & CATTLE CO

JOHN S DAHL
6442 55TH AVE SE
GACKLE, ND 58442
701-485-3206 jldahl@daktel.com

DLC

DIAMOND PLUS CATTLE

ROGER & DAVID PRESLER
6161 56TH AVE SE
GACKLE, ND 58442
701-485-3505 dakotadpc@daktel.com

DPC

Ohio

KEEFER RIDGE CATTLE CO

CORY J RICHTER
4632 FARVIEW LANE
CINCINNATI, OH 45247
513-385-1776 kefferridgecattleco@gmail.com

KRCC

Oklahoma

BOLLENBACH CATTLE COMPANY

A SCOTT BOLLENBACH
RR 1 BOX 5-A
KINGFISHER, OK 73750
405-375-5440 PH & FAX scottbollenbach@pdi.net

SB

South Dakota

BLOCK FARMS

CRAIG BLOCK
44631 125TH ST
EDEN, SD 57232
605-486-4256 blockfarms@veaturecomm.net

BK

JAMES E FAULSTICH **JF**
JAMES E FAULSTICH
33795 186TH ST
HIGHMORE, SD 57345-5305
605-852-2622

T/K RANCH
TERRY KENYON
17979 483 AVE
GARY, SD 57237
605-272-5260

Texas

FARNELL CATTLE COMPANY **NCF**
NORRIS & CATHY FARNELL
5710 FM 235E
JACKSONVILLE, TX 75766
903-726-3265 norriscathy1@gmail.com

MIKE AND CONNIE MALLETT **MOM**
MIKE AND CONNIE MALLETT
10602 N HWY 281
LAMPASAS, TX 76550
512-556-1021 m2mallett@wildblue.net

Utah

BUCHANAN RANCHES
ROCKY BUCHANAN
745 SO CANAL RD
VENICE, UT 84701
rockybuchanan1@yahoo.com

Washington

KENNETH A HILLE **GR**
GREATER RALSTON SOUTH DEVONS
N 375 BENZEL RD
RITZVILLE, WA 99169
509-659-0259 khille@ritzville.com

X-E STOCK RANCH **XE**
LEE & CONNIE ENGELHARDT
8354 RD 16 NE
MOSES LAKE, WA 98837
509-766-0161 xesouthdevon@adessaoffice.com

Wisconsin

LANCE A BRANTNER **LAB**
LANCE BRANTNER
N4524 710TH STREET
ELLSWORTH, WI 54011
651-214-9918

ROBERT P EICHER **EEE**
ROBERT EICHER
3092 CO ROAD E
GLENWOOD CITY, WI 54013
715-265-4075

KNN FARMS **KNN**
KURT AND NETTIE NELSON
W5137 290TH AVENUE
BAY CITY, WI 54723
715-594-3805 netnels@bevcomm.net

M & K SOUTH DEVONS **MKSD**
MIKE & KARLA POLK
N 4312 750TH STREET
ELLSWORTH, WI 54011
715-273-5818 mpolk@presenter.com

MAPLEWOOD FARM **MWF**
CARL AND BETTY STINE
W6347 710TH AVE
BELDENVILLE, WI 54003
715-273-4636

OAK HILL FARMS LLC **OHF**
JANE HOMAN
E3352 CHAPEL ROAD
HILLPOINT, WI 53937
608-986-3406 homanj@tds.net

EVERETT PAPKE **ELS**
EVERETT PAPKE
S 8020 HILLVIEW ROAD
EAU CLAIRE, WI 54701
715-878-4088

SPRING BLUFF CATTLE COMPANY
BRIDGET BULA
349 COUNTY ROAD M
COLOMA, WI 54930
608-339-9869 bula9696@yahoo.com

VALLEY HILL FARM **KOL**
TODD LEONARD
N4524 710 STREET
ELLSWORTH, WI 54011
715-273-4520 tdleonard@live.com

Wyoming

MALM RANCH CO **MRCO**
GORDON MALM
PO BOX 55
ALBIN, WY 82050
307-246-3223 mrc3mt@aol.com

WILLIAM L MCCLEEREY **WM**
WYOMING SOUTH DEVONS
PO BOX 72
MANVILLE, WY 82227
307-334-2673

Overseas

HENDRIKUS AND OR DAWN BRUINS **HDB**
HENDRIKUS BRUINS
BOX 712
ELK POINT ALBERTA CANADA, T0A 1A0
780-724-4242 H dbruins555@hotmail.com

DIAMOND M SOUTH DEVON **DMS**
ELSIE BEDDOES
BOX 389
DUCHESS AB CANADA, T0J 020
403-566-2467 dmrranching@gmail.com

FURZE SOUTH DEVONS **TWL**
TERESA WALKER
BOX 44
REDVERS SK CANADA, S0C 2H0
306-646-4460 teresa.walker@sasktel.net

HIGH CHAPPARAL RANCH **HCR**
BARRY & GLORIA BIGALKY
BOX 68
LIPTON SK CANADA, S0G3B0
306-336-2666 highchapparat@sasktel.net

MISSOURI COTEAU CATTLE COMPANY
GARY JONES
BOX 38
CRANE VALLEY SK CANADA, SOH 1B0
306-631-6274

SAMPSON MCGREGOR STOCK FARM **SMS**
RALPH MCGREGOR & B G SAMPSON
GENERAL DELIVERY
IRON RIVER AB CANADA, T0A2A0
780-826-7077 sms@xplornet.com

DESIGNER GENE TECHNOLOGIES, INC.

Rethel King
4594 Union Road
Harrison, AR 72601
870-743-3440

*Proud to be the ultrasound technicians for
the National South Devon Show.*

South Devon World Association 9th World Congress and Tour • USA

September 13-October 4, 2014

"The 2014 World South Devon Tour was an epic event, with absolute success"

David Corker, immediate past president, World South Devon Society, Australia

"All our friends are amazed at how far we travelled and how incredible to see 14 states of America, such wonderful people, beautiful scenery and so much knowledge gained."

Leonie Daley, president Australian South Devon Society.

"We would like to thank you all so very much for welcoming us into the group and for making the trip such a memorable one for us, we had a wonderful time."

John & Julie Miller, president South Devon Cattle Breeders Society of South Africa

"Yes, truly epic. Many thanks for all your commitment and hard work – you must be well pleased with the result – well done."

Richard Camp, United Kingdom

"Thanks again for such a wonderful tour - we really appreciate the effort you put into the organization."

Graham & Heather Lindsay, Australia

"We can't begin to thank you enough for a wonderful trip for which we will have lasting memories. We loved America, its beauty and its hugeness. We felt so welcome everywhere we went."

Peter & Belinda Owen, United Kingdom

"We too enjoyed the North American World Tour having a wonderful experience seeing many operations, some great cattle, wonderful scenery and wonderful like-minded folk. Thank you to Dar & Lynn for all your hard work that went into providing us with a very memorable trip indeed."

Brian & Ann Thomson, New Zealand



Thank you . . .

Express Ranches
Express Clydesdales
Bollenbach Cattle Company
Joplin Stockyards
Triple Crown South Devons
Walnut Grove Farm
Kansas State University
US Meat Animal Research Center
Nichols Farms
Hillcrest South Devon
JVM Cattle Company
KNN Farm

Valley Hill Farm
White Farms
Thompson Land & Cattle
RP Farms
Popken South Devon
Schiefelbein Farms
DLCC Ranch
Wulf Cattle
T/K Ranch
Daybreak Ranch
Dahl Land & Cattle Company
Diamond Plus Cattle

MJB Ranch
Midland Bull Test
4J Ranch
George Farms
Elkington Brothers & Sons
Leachman Cattle Co. of Colorado
Colorado State University
Kuner Feedlot
Josh White
Lisa Bard
Lee Leachman



2014 World Tour an 'Epic Event'

The 2014 World South Devon Tour and Congress was an epic event, with absolute success, said David Corker, immediate past president of the World South Devon Society.

The tour began in Fort Worth, Texas and traveled through 14 states to the final conference destination of Estes Park, Colorado. Representatives from Australia, New Zealand, United Kingdom, South Africa, Canada and the U.S. participated.

"All of our friends are amazed at how far we traveled and how incredible to see 14 states of America, such wonderful people, beautiful scenery and so much knowledge gained," said Leonie Daley, president of the Australian South Devon Society.

Hosts rolled out the red carpet for the tour group and provided hospitality, food, refreshments, entertainment and great cattle to look at.

Along with visiting the U.S. Meat Animal Research Center, South Devon purebred and commercial operations, seedstock operations, feedlots, dairy and horse operations, stops were also made in three National Parks.

Delegates met during the two-day conference to discuss the future of the South Devon breed globally. Speaker Lee Leachman, Leachman Cattle of Colorado talked about the necessity of all societies to work

together to gather performance data to obtain a global coordinated selection system. The goal is to establish South Devon as the British breed alternative to Angus. "The breed works, we know that," said Leachman. The consensus among the delegates was to coordinate groups of breeders in each country to provide updated genetic information, performance and carcass data that would develop a larger base of information worldwide.

The South Devon Cattle Society of New Zealand agreed to share their promotional phrase, "More Beef, No Grief" with other countries.

Elected to the World South Devon Society Council at the 2014 conference, Brian Thomson, New Zealand, president; Mervyn Rowe, United Kingdom, vice president; James Moon, United Kingdom, secretary/treasurer; David Corker, Australia, past president. Council members: Daphne Lines, Australia; Margaret Northey, United Kingdom; Dar Giess, USA; Teresa Walker, Canada; John Miller, South Africa.

The 2017 World South Devon Tour and Congress will be hosted by the South Devon Cattle Breeders Society of South Africa.

Representatives from Australia, United Kingdom, New Zealand, Canada, USA and South Africa attended the 2014 World South Devon Tour and Conference in Estes Park, Colorado.



TRIPLE M BEEF

Full service South Devon seedstock
producer providing high quality
black bulls and females.

Customer Service
Quality Performance-Tested Bulls

Maternal Females You
Can Count On

Featuring the very best in black
South Devon genetics.

Heifers and Bulls For Sale.

Visitors Always Welcome



Tony & Ronnie Matthis
5607 Mosely Avenue
Clinton, NC 28328
Phone (910) 385-5260
E-Mail: beefman@centurylink.net



ADVERTISER'S INDEX

Bar E.....	7
Beddoes	62
Dahl Land & Cattle LLP	21
Designer Gene Technologies, Inc.	69
DLCC Ranch	32-33
Elkington Brothers & Sons South Devons	74
Four J Ranch & Six Bar Cattle.....	7
Fraser Ranch	75
Hillbilly Haven South Devons	69
Hillcrest	7
Junior National	25
JVM Cattle Company	29
KNN.....	74
Leachman Cattle of Colorado	BC
Macomb Maple Farms	28
Midland Bull Test	3
MJB Ranch.....	2
New England / Mid-Atlantic	28
Nichols Farms.....	59
NILE.....	13
Northern States.....	15
Popken South Devon & RP Farms.....	23
Presler	62
Ritchey Mfg. Co.	16
Royal Beef Genetics	19
Scotchlands Farm	62
Thompson.....	62
Triple Crown	9
Triple M Beef.....	73
Walnut Grove	59
XE Stock Ranch.....	15



Kurt & Nettie Nelson
Megan & Paige
 W5137 290th Ave.
 Bay City, WI 54723
 Email: netnels@bevcomm.net
 Home: 715-594-3805
 Kurt: 651-246-8774
 Nettie: 651-246-8252

*Semen, Bulls
and Females
for sale.*

Visitors and inquires always welcome.

Elkington Brothers & Sons South Devons

*Selling 25 South Devon Bulls & 5 Bred Heifers
the First Friday in February*



EBS Elker 1121

BW: +4.1 • WW: +51 • YW: +97 • Milk: +23

- **Massive & Meaty!**
- **This Bull has Everything!**
- **Moderate-Framed, Sound & Easy-Moving!**
- **BW 98 lbs.**
- **Owned with Slash D Ranch, Howe, Idaho & Bulco Genetics, West Australia.**
- **Semen & Breeding Shares Available.**

Cimarron Triumph 705T



- BW: -4.5 • WW +24 • YW: +36 • Milk: +34
- Triumph is a low birth weight bull we bought from Scott Bollenbach. **He is one of the top birthweight bulls in the South Devon breed. Co-owned with MJB Ranch, Lodge Grass, Montana**
- Semen available contact either owner.

For more information, contact:

Elkington
 Polled Herefords & South Devon

5080 East Sunnyside Road • Idaho Fall, ID 83406
 Keith (208) 523-2286 • Cell (208) 521-1774
 Layne (208) 681-0765 • Brent (208) 523-6461
 ephrbulls@hotmail.com



Perfection With
**& SOUTH DEVONS
POUNDMAKERS**



2015
*National
Western
Stock Show
Champions*

**2015 NWSS GRAND CHAMPION
POUNDMAKER COW-CALF PAIR**

FRASER DON'T LOOK ETHEL DOB: 12/12/12

Sire: DLCC Sure Thing Too 119T • Dam: Fraser Forever Lady 11T
BW -.3 WW +40 YW +75 MILK +19

FRASER IT'S TOO LATE *Bull Calf at Side* DOB: 10/1/14

Sire: DLCC Shur Loc 99W • Dam: Fraser Don't Look Ethel



**2015 NWSS SOUTH DEVON
SPRING HEIFER CALF CHAMPION**

FRASER LOVIE DOVIE DOB: 5/28/14

Sire: DLCC Sure Thing Too 119T
Dam: Badeland Cuddles 1Y
BW +.5 WW +49 YW +86 MILK +28

FRASER RANCH

Burns, Oregon and Lincoln, California

LOUANN FRASER: 530 228-3567 > FRASERCATTLE@AOL.COM

kansas division > CHAD WRIGHT: 406 780-1342

Raising High Profit South Devons!

At Leachman Cattle of Colorado, we know that South Devon's are high on profit. They combine high marbling and feed efficiency in a British outcross that compliments Angus cross cattle. We are mixing South Devon into our Stabilizer composite program. Through our cooperators, we are also raising a few purebred South Devon bulls.

If you are in the market for South Devon hybrids to utilize in your crossbreeding program, come see us this Spring. Also, don't miss out on the elite purebred genetics offered below:



HE SELLS
MARCH 30TH!

DLCC Admiral 96A (87.5%, #204594)

Admiral was tested in the DLCC fall contemporary group of South Devon bulls at LCoC. He posted a \$14,568 \$Profit that ranks him in the top 1% of our population for overall profitability. He is moderate birth and frame, yet offers lots of growth and muscularity. He has big time herd bull potential.



SEMEN
FOR SALE!

DLCC Shur Loc 99W (87.5%, #196653)

Shur Loc is one of the best South Devon sires we have ever tested. With each calf crop, his figures continue to climb. He sires moderate birth weights and frame with above average marbling and good feed efficiency. Consider him for use on Angus and Simmental cross cows to increase hybrid vigor.



X611B

(43.5%, #205657)
by Leachman Testify

These Feature Bull Calves Sell:

R004B

(50%, #206336)
by Leachman Yosemite



As pictured at the 2014 NASDA World Tour.

Make plans today to attend the

Leachman Spring Bull & Female Sale!

Saturday, March 28th

- Attend the CSU Bull Sale
- Join us for the Leachman Dinner Social at the Budweiser brewery.

Sunday, March 29th

- Cowboy Church – 9:00 a.m.
- Cowman's Seminar – 1:00 p.m.
- Cowman's Banquet & Concert – 6:00 p.m. (RSVP required)



Hotel Headquarters:
Embassy Suites Hotel
Loveland, CO
(970) 593-6200



Monday, March 30th Bull & Female Sale

9:00 a.m. • CSU's ARDEC Center • Wellington, CO

500 Bulls & 100 Females

Featuring over 30 bulls with 25% or more South Devon.
Over 1/2 of the bull offering contains some South Devon.
Elite South Devon and hybrid heifers will also sell.



Lee Leachman, Owner • Ryan Peterson, Manager & Sales
5100 ECR 70, Wellington, CO 80549
(970) 568-3983 • www.leachman.com

